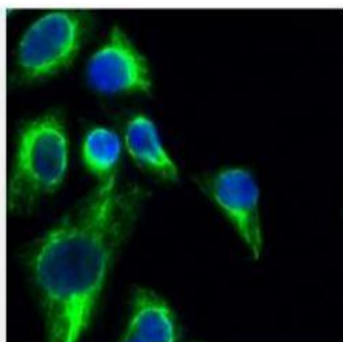


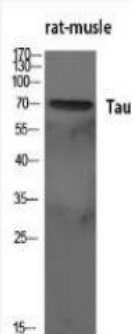
Tau Polyclonal Antibody

Catalog No.	IPB0300
Reactivity	Human; Mouse; Rat
Applications	WB; IHC-p; IF/ICC; ELISA
Dilution	WB: 1:500-1:2000 IHC: 1:50-1:200 IF: 1:50-1:200 ELISA: 1:20000
Gene Name	MAPT
Protein Name	Microtubule-associated protein tau
Human Gene Id	4137
Swiss-Prot	P10636
Formulation	Liquid in PBS containing 50% glycerol, 05% BSA and 002% sodium azide
Source	Rabbit
Purification	The antibody was affinity-purified from rabbit antiserum by affinity-chromatography using epitope-specific immunogen
Concentration	1 mg/ml
Storage&Stability	-20°C/1 year
Subcellular Location	Cytoplasm, cytosol Cell membrane; Peripheral membrane protein; Cytoplasmic side Cytoplasm, cytoskeleton Cell projection, axon Cell projection, dendrite Secreted Mostly found in the axons of neurons, in the cytosol and in association with plasma membrane components (PubMed:10747907) Can be secreted; the secretion is dependent on protein unfolding and facilitated by the cargo receptor TMED10; it results in protein translocation from the cytoplasm into the ERGIC (endoplasmic reticulum-Golgi intermediate compartment) followed by vesicle entry and secretion (PubMed:32272059)
MW	78746
Background	This gene encodes the microtubule-associated protein tau (MAPT) whose transcript undergoes complex, regulated alternative splicing, giving rise to several mRNA species MAPT transcripts are differentially expressed in the nervous system, depending on stage of neuronal maturation and neuron type MAPT gene mutations have been associated with several neurodegenerative disorders such as Alzheimer's disease, Pick's disease, frontotemporal dementia, cortico-basal degeneration and progressive supranuclear palsy

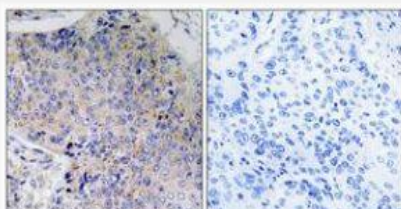
Products Images:



Immunofluorescence analysis of HeLa cell. 1, Tau Polyclonal Antibody (green) was diluted at 1:200 (4° overnight). 2, Goat Anti Rabbit Alexa Fluor 488 Catalog: RS3211 was diluted at 1:1000 (room temperature, 50 min). 3, DAPI (blue) 10 min.



Western Blot analysis of various cells using Tau Polyclonal Antibody diluted at 1:500



Immunohistochemical analysis of paraffin-embedded human lung cancer. Antibody was diluted at 1:100 (4° overnight). High-pressure and temperature Tris-EDTA, pH 8.0 was used for antigen retrieval. Negative control (right) obtained from antibody was pre-absorbed by immunogen peptide.