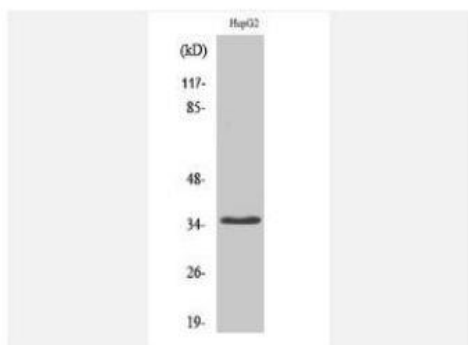


CD34 Polyclonal Antibody

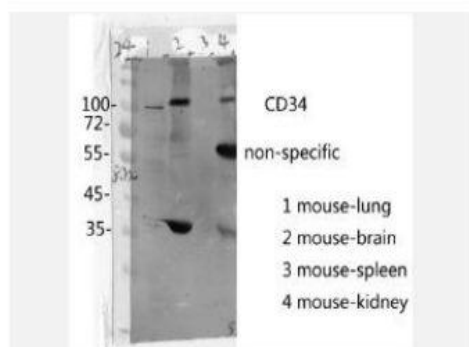
| | |
|------------------------------|--|
| Catalog No. | IPB0298 |
| Reactivity | Human; Mouse; |
| Applications | WB; IHC-p; ELISA |
| Dilution | IHC: 1:100-1:200 WB: 1:500-1:2000 ELISA: 1:10000 |
| Gene Name | CD34 |
| Protein Name | Hematopoietic progenitor cell antigen CD34 |
| Human Gene Id | 947 |
| Swiss-Prot | P28906 |
| Formulation | Liquid in PBS containing 50% glycerol, 05% BSA and 002% sodium azide |
| Source | Rabbit |
| Purification | The antibody was affinity-purified from rabbit antiserum by affinity-chromatography using epitope-specific immunogen |
| Concentration | 1 mg/ml |
| Storage&Stability | -20°C/1 year |
| Subcellular Location | Membrane; Single-pass type I membrane protein |
| MW | 40716 |
| Background | The protein encoded by this gene may play a role in the attachment of stem cells to the bone marrow extracellular matrix or to stromal cells This single-pass membrane protein is highly glycosylated and phosphorylated by protein kinase C Two transcript variants encoding different isoforms have been found for this gene |

Products Images:

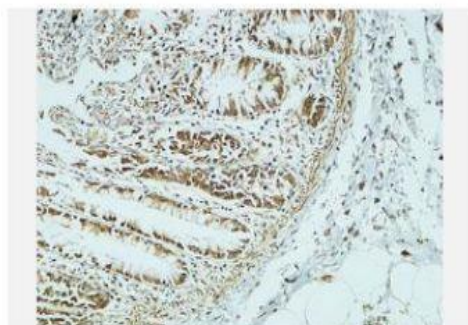




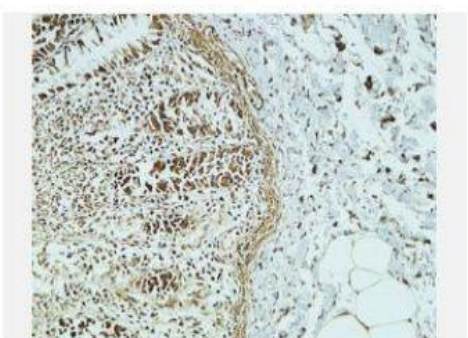
Western Blot analysis of HepG2 cells using CD34 Polyclonal Antibody diluted at 1:2000



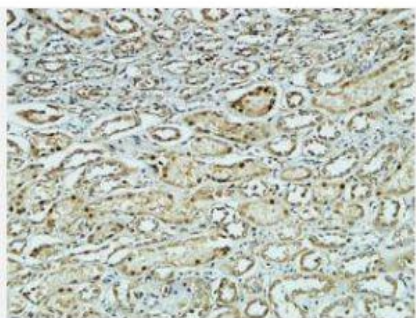
The picture was kindly provided by our customer



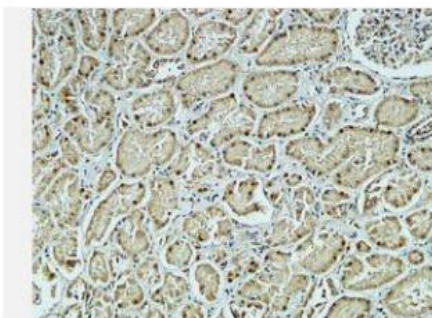
Immunohistochemical analysis of paraffin-embedded Human colon. 1, Antibody was diluted at 1:200(4° overnight). 2, High-pressure and temperature EDTA, pH8.0 was used for antigen retrieval. 3, Secondary antibody was diluted at 1:200(room temperature, 30min).



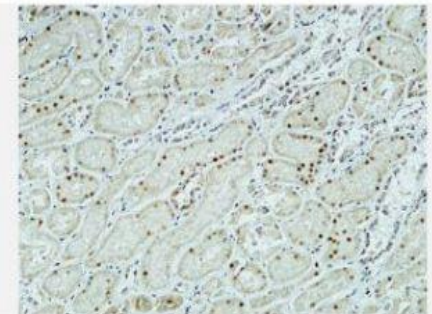
Immunohistochemical analysis of paraffin-embedded Human colon. 1, Antibody was diluted at 1:200(4° overnight). 2, High-pressure and temperature EDTA, pH8.0 was used for antigen retrieval. 3, Secondary antibody was diluted at 1:200(room temperature, 30min).



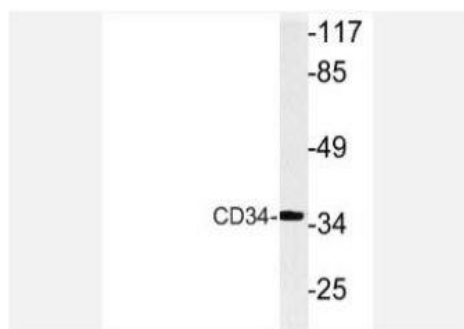
Immunohistochemical analysis of paraffin-embedded Human kidney. 1, Antibody was diluted at 1:200(4° overnight). 2, High-pressure and temperature EDTA, pH8.0 was used for antigen retrieval. 3,Secondary antibody was diluted at 1:200(room temperature, 30min).



Immunohistochemical analysis of paraffin-embedded Human kidney. 1, Antibody was diluted at 1:200(4° overnight). 2, High-pressure and temperature EDTA, pH8.0 was used for antigen retrieval. 3,Secondary antibody was diluted at 1:200(room temperature, 30min).



Immunohistochemical analysis of paraffin-embedded Human kidney. 1, Antibody was diluted at 1:200(4° overnight). 2, High-pressure and temperature EDTA, pH8.0 was used for antigen retrieval. 3,Secondary antibody was diluted at 1:200(room temperature, 30min).



Western blot analysis of lysate from HepG2 cells, using CD34 antibody.