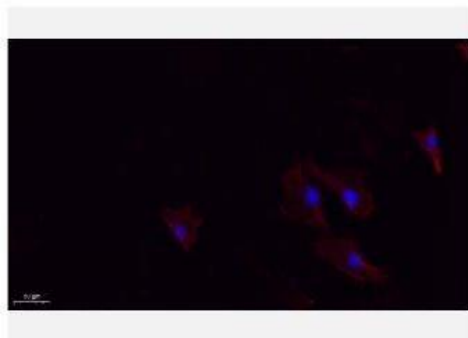


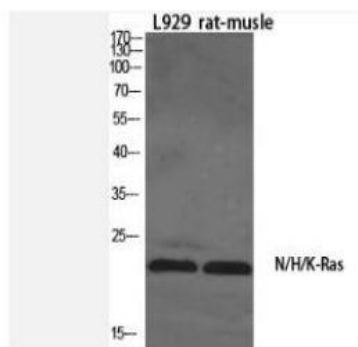
N:H:K-Ras Polyclonal Antibody

Catalog No.	IPB0293
Reactivity	Human; Mouse; Rat
Applications	WB; IHC-p; IF/ICC; ELISA
Dilution	WB: 1:500-1:2000 IHC-p: 1:100-1:200 ELISA: 1:20000 IF: 1:50-1:200
Gene Name	NRAS:HRAS:KRAS
Protein Name	GTPase Nras/GTPase Hras/GTPase Kras
Human Gene Id	3265:3845:4893
Swiss-Prot	P01111:P01112:P01116
Formulation	Liquid in PBS containing 50% glycerol, 05% BSA and 002% sodium azide
Source	Rabbit
Purification	The antibody was affinity-purified from rabbit antiserum by affinity-chromatography using epitope-specific immunogen
Concentration	1 mg/ml
Storage&Stability	-20°C/1 year
Subcellular Location	Cell membrane; Lipid-anchor; Cytoplasmic side Golgi apparatus membrane; Lipid-anchor Shuttles between the plasma membrane and the Golgi apparatus
MW	21298/21656
Background	This is an N-ras oncogene encoding a membrane protein that shuttles between the Golgi apparatus and the plasma membrane This shuttling is regulated through palmitoylation and depalmitoylation by the ZDHHC9-GOLGA7 complex The encoded protein, which has intrinsic GTPase activity, is activated by a guanine nucleotide-exchange factor and inactivated by a GTPase activating protein Mutations in this gene have been associated with somatic rectal cancer, follicular thyroid cancer, autoimmune lymphoproliferative syndrome, Noonan syndrome, and juvenile myelomonocytic leukemia

Products Images:



Immunofluorescence analysis of A549. 1,primary Antibody(red) was diluted at 1:200(4°C overnight). 2, Goat Anti Rabbit IgG (H&L) - Alexa Fluor 594 Secondary antibody was diluted at 1:1000(room temperature, 50min).3, Picture B: DAPI(blue) 10min.



Western Blot analysis of various cells using N/H/K-Ras
Polyclonal Antibody diluted at 1:1000