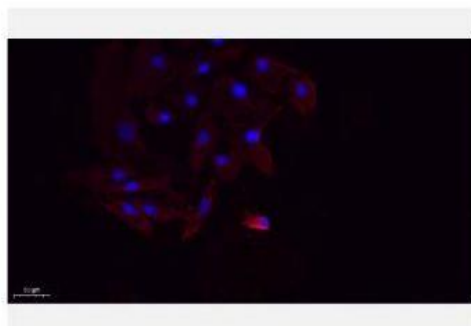


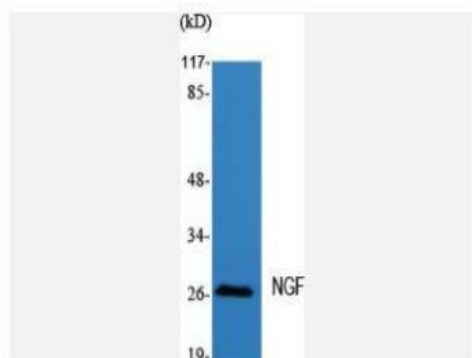
NGF Polyclonal Antibody

Catalog No.	IPB0292
Reactivity	Human; Mouse; Rat
Applications	WB; IHC-p; IF/ICC; ELISA
Dilution	WB: 1:500-1:2000 IHC-p: 1:100-1:200 ELISA: 1:20000 IF: 1:50-1:200
Gene Name	NGF
Protein Name	Beta-nerve growth factor
Human Gene Id	4803
Swiss-Prot	P01138
Formulation	Liquid in PBS containing 50% glycerol, 05% BSA and 002% sodium azide
Source	Rabbit
Purification	The antibody was affinity-purified from rabbit antiserum by affinity-chromatography using epitope-specific immunogen
Concentration	1 mg/ml
Storage&Stability	-20°C/1 year
Subcellular Location	Secreted Endosome lumen ProNGF is endocytosed after binding to the cell surface receptor formed by SORT1 and NGFR
MW	26959
Background	This gene is a member of the NGF-beta family and encodes a secreted protein which homodimerizes and is incorporated into a larger complex This protein has nerve growth stimulating activity and the complex is involved in the regulation of growth and the differentiation of sympathetic and certain sensory neurons Mutations in this gene have been associated with hereditary sensory and autonomic neuropathy, type 5 (HSAN5), and dysregulation of this gene's expression is associated with allergic rhinitis

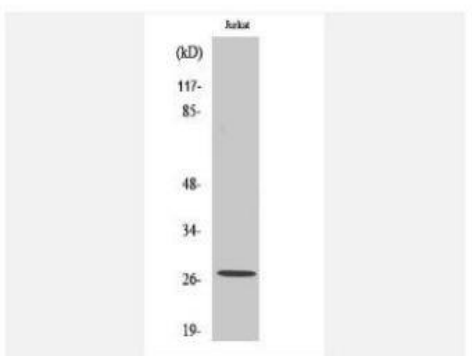
Products Images:



Immunofluorescence analysis of A549. 1,primary Antibody(red) was diluted at 1:200(4°C overnight). 2, Goat Anti Rabbit IgG (H&L) - Alexa Fluor 594 Secondary antibody was diluted at 1:1000(room temperature, 50min).3, Picture B: DAPI(blue) 10min.



Western Blot analysis of various cells using NGF Polyclonal Antibody diluted at 1:2000



Western Blot analysis of Jurkat cells using NGF Polyclonal Antibody diluted at 1:2000



Western blot analysis of lysate from Jurkat cells, using NGF antibody.