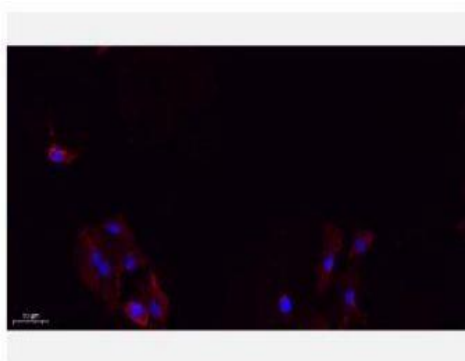


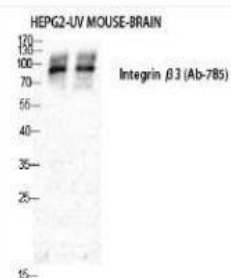
Integrin $\beta 3$ Polyclonal Antibody

Catalog No.	IPB0291
Reactivity	Human; Mouse; Rat
Applications	WB; IHC-p; IF/ICC; ELISA
Dilution	WB: 1:500-1:2000 IHC-p: 1:100-1:200 ELISA: 1:20000 IF: 1:50-1:200
Gene Name	ITGB3
Protein Name	Integrin beta-3
Human Gene Id	3690
Swiss-Prot	P05106
Formulation	Liquid in PBS containing 50% glycerol, 05% BSA and 002% sodium azide
Source	Rabbit
Purification	The antibody was affinity-purified from rabbit antiserum by affinity-chromatography using epitope-specific immunogen
Concentration	1 mg/ml
Storage&Stability	-20°C/1 year
Subcellular Location	Cell membrane; Single-pass type I membrane protein Cell projection, lamellipodium membrane Cell junction, focal adhesion Cell junction, synapse, postsynaptic cell membrane; Single-pass type I membrane protein Cell junction, synapse
MW	87214
Background	The ITGB3 protein product is the integrin beta chain beta 3 Integrins are integral cell-surface proteins composed of an alpha chain and a beta chain A given chain may combine with multiple partners resulting in different integrins Integrin beta 3 is found along with the alpha IIb chain in platelets Integrins are known to participate in cell adhesion as well as cell-surface mediated signalling

Products Images:



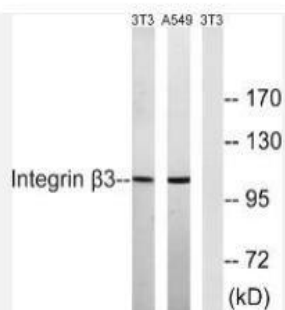
Immunofluorescence analysis of A549. 1,primary Antibody(red) was diluted at 1:200(4°C overnight). 2, Goat Anti Rabbit IgG (H&L) - Alexa Fluor 594 Secondary antibody was diluted at 1:1000(room temperature, 50min).3, Picture B: DAPI(blue) 10min.



Western Blot analysis of various cells using Integrin $\beta 3$
Polyclonal Antibody diluted at 1:500



Western Blot analysis of NIH-3T3 cells using Integrin $\beta 3$
Polyclonal Antibody diluted at 1:500



Western blot analysis of lysates from NIH/3T3 and A549 cells,
using Integrin beta3 Antibody. The lane on the right is
blocked with the synthesized peptide.