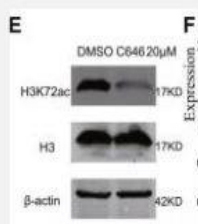


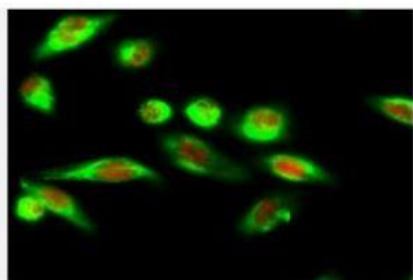
## Histone H3 Polyclonal Antibody

<b>Catalog No.</b>	IPB0290
<b>Reactivity</b>	Human; Mouse; Rat
<b>Applications</b>	WB; IHC-p; IF/ICC; ELISA
<b>Dilution</b>	WB: 1:500-1:2000 IHC: 1:50-1:200 IF: 1:50-1:200 ELISA: 1:20000
<b>Gene Name</b>	HIST1H3A
<b>Protein Name</b>	Histone H31
<b>Human Gene Id</b>	8350:8351:8352:8353:8354:8355:8356:8357:8358:8968
<b>Swiss-Prot</b>	P68431:Q71DI3:P84243
<b>Formulation</b>	Liquid in PBS containing 50% glycerol, 05% BSA and 002% sodium azide
<b>Source</b>	Rabbit
<b>Purification</b>	The antibody was affinity-purified from rabbit antiserum by affinity-chromatography using epitope-specific immunogen
<b>Concentration</b>	1 mg/ml
<b>Storage&amp;Stability</b>	-20°C/1 year
<b>Subcellular Location</b>	Nucleus Chromosome
<b>MW</b>	15273
<b>Background</b>	Histones are basic nuclear proteins that are responsible for the nucleosome structure of the chromosomal fiber in eukaryotes This structure consists of approximately 146 bp of DNA wrapped around a nucleosome, an octamer composed of pairs of each of the four core histones (H2A, H2B, H3, and H4) The chromatin fiber is further compacted through the interaction of a linker histone, H1, with the DNA between the nucleosomes to form higher order chromatin structures This gene is intronless and encodes a replication-dependent histone that is a member of the histone H3 family Transcripts from this gene lack polyA tails; instead, they contain a palindromic termination element This gene is found in the large histone gene cluster on chromosome 6p22-p213

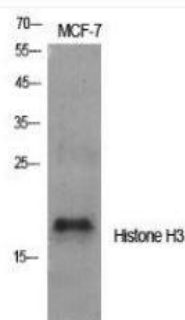
### Products Images:



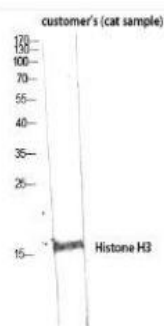
Zhao, Hongying, et al. "Comprehensive landscape of epigenetic-dysregulated lncRNAs reveals a profound role of enhancers in carcinogenesis in BC subtypes." *Molecular Therapy-Nucleic Acids* 23 (2021): 667-681.



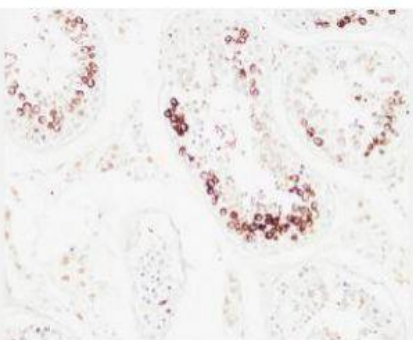
Immunofluorescence analysis of Hela cell. 1, Histone H3 Polyclonal Antibody (red) was diluted at 1:200 (4° overnight). LC3A mouse Monoclonal Antibody (5G10) (green) was diluted at 1:200 (4° overnight). 2, Goat Anti Rabbit Alexa Fluor 594 Catalog: RS3611 was diluted at 1:1000 (room temperature, 50min). Goat Anti Mouse Alexa Fluor 488 Catalog: RS3208 was diluted at 1:1000 (room temperature, 50min).



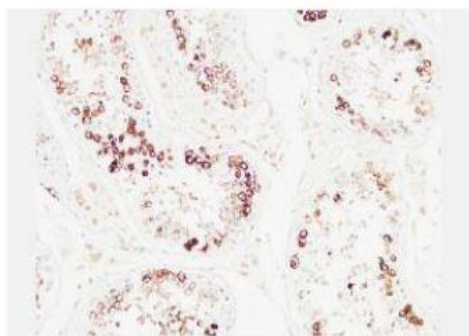
Western Blot analysis of various cells using Histone H3 Polyclonal Antibody diluted at 1:2000 cells nucleus extracted by Minute TM Cytoplasmic and Nuclear Fractionation kit (SC-003, Invent biotech, MN, USA).



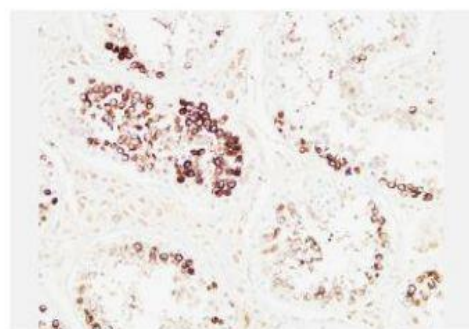
Western Blot analysis of customer's (cat sample) using Histone H3 Polyclonal Antibody diluted at 1:2000 cells nucleus extracted by Minute TM Cytoplasmic and Nuclear Fractionation kit (SC-003, Invent biotech, MN, USA).



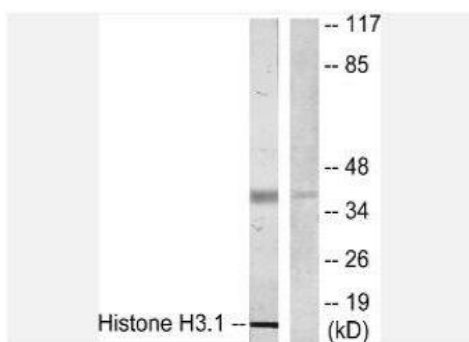
Immunohistochemical analysis of paraffin-embedded Human testis. 1, Antibody was diluted at 1:200 (4° overnight). 2, High-pressure and temperature EDTA, pH 8.0 was used for antigen retrieval. 3, Secondary antibody was diluted at 1:200 (room temperature, 30min).



Immunohistochemical analysis of paraffin-embedded Human testis. 1, Antibody was diluted at 1:200(4° overnight). 2, High-pressure and temperature EDTA, pH8.0 was used for antigen retrieval. 3, Secondary antibody was diluted at 1:200(room temperature, 30min).



Immunohistochemical analysis of paraffin-embedded Human testis. 1, Antibody was diluted at 1:200(4° overnight). 2, High-pressure and temperature EDTA, pH8.0 was used for antigen retrieval. 3, Secondary antibody was diluted at 1:200(room temperature, 30min).



Western blot analysis of lysates from COLO205 cells, using Histone H3.1 Antibody. The lane on the right is blocked with the synthesized peptide.