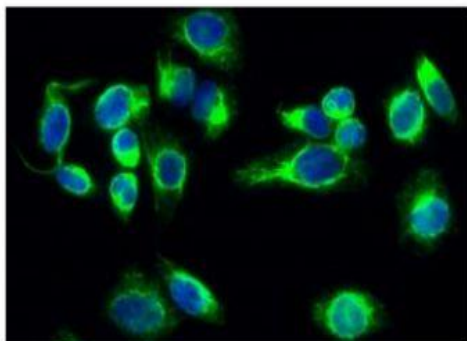


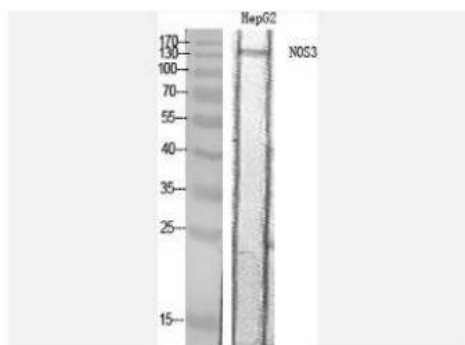
NOS3 Polyclonal Antibody

Catalog No.	IPB0273
Reactivity	Human; Mouse; Rat
Applications	WB; IHC-p; IF/ICC; ELISA
Dilution	WB: 1:500-1:2000 IHC: 1:50-1:200 IF: 1:50-1:200 ELISA: 1:40000
Gene Name	NOS3
Protein Name	Nitric oxide synthase endothelial
Human Gene Id	4846
Swiss-Prot	P29474
Formulation	Liquid in PBS containing 50% glycerol, 05% BSA and 002% sodium azide
Source	Rabbit
Purification	The antibody was affinity-purified from rabbit antiserum by affinity-chromatography using epitope-specific immunogen
Concentration	1 mg/ml
Storage&Stability	-20°C/1 year
Subcellular Location	Cell membrane Membrane, caveola Cytoplasm, cytoskeleton Golgi apparatus Specifically associates with actin cytoskeleton in the G2 phase of the cell cycle; which is favored by interaction with NOSIP and results in a reduced enzymatic activity
MW	133289
Background	Nitric oxide is a reactive free radical which acts as a biologic mediator in several processes, including neurotransmission and antimicrobial and antitumoral activities Nitric oxide is synthesized from L-arginine by nitric oxide synthases Variations in this gene are associated with susceptibility to coronary spasm Multiple transcript variants encoding different isoforms have been found for this gene

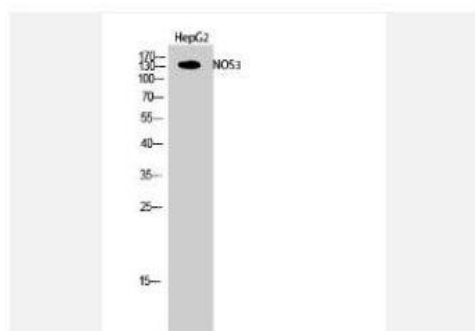
Products Images:



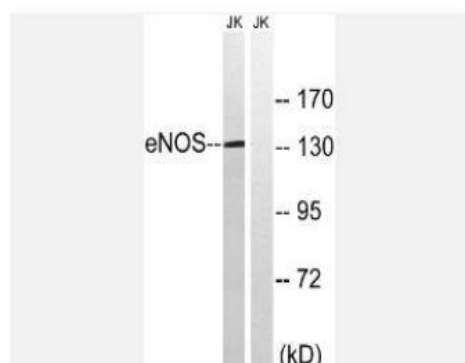
Immunofluorescence analysis of HeLa cell. 1, NOS3 Polyclonal Antibody(green) was diluted at 1:200(4° overnight). 2, Goat Anti Rabbit Alexa Fluor 488 Catalog:RS3211 was diluted at 1:1000(room temperature, 50min). 3 DAPI(blue) 10min.



Western Blot analysis of HepG2 cells using NOS3 Polyclonal Antibody



Western Blot analysis of HepG2 cells using NOS3 Polyclonal Antibody



Western blot analysis of lysates from Jurkat cells, treated with Insulin 0.01U/ml 15', using eNOS Antibody. The lane on the right is blocked with the synthesized peptide.