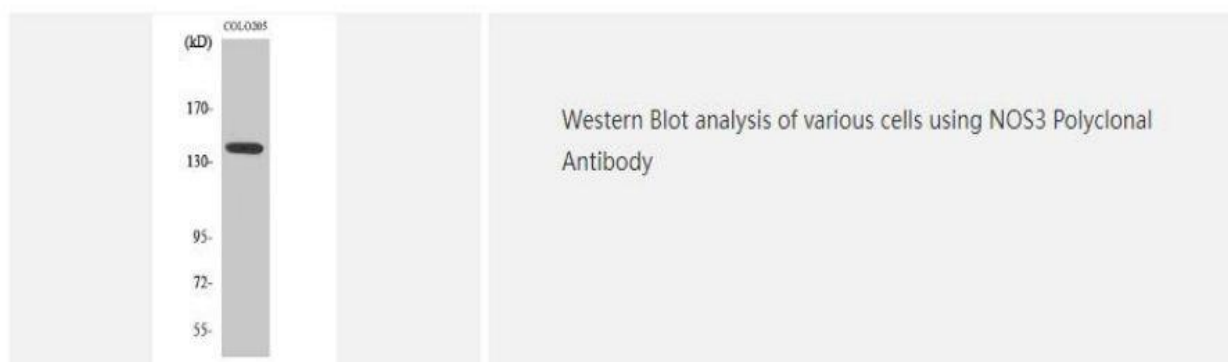
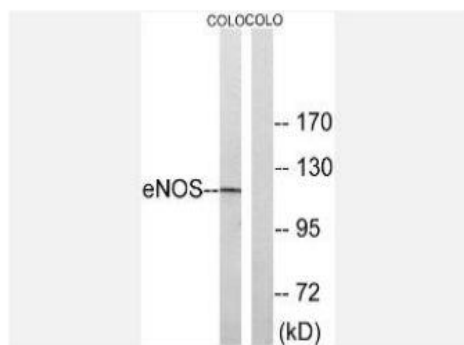


## NOS3 Polyclonal Antibody

<b>Catalog No.</b>	IPB0272
<b>Reactivity</b>	Human; Mouse; Rat
<b>Applications</b>	WB; ELISA
<b>Dilution</b>	WB: 1:500-1:2000    ELISA: 1:5000
<b>Gene Name</b>	NOS3
<b>Protein Name</b>	Nitric oxide synthase endothelial
<b>Human Gene Id</b>	4846
<b>Swiss-Prot</b>	P29474
<b>Formulation</b>	Liquid in PBS containing 50% glycerol, 05% BSA and 002% sodium azide
<b>Source</b>	Rabbit
<b>Purification</b>	The antibody was affinity-purified from rabbit antiserum by affinity-chromatography using epitope-specific immunogen
<b>Concentration</b>	1 mg/ml
<b>Storage&amp;Stability</b>	-20°C/1 year
<b>Subcellular Location</b>	Cell membrane Membrane, caveola Cytoplasm, cytoskeleton Golgi apparatus Specifically associates with actin cytoskeleton in the G2 phase of the cell cycle; which is favored by interaction with NOSIP and results in a reduced enzymatic activity
<b>MW</b>	133289
<b>Background</b>	Nitric oxide is a reactive free radical which acts as a biologic mediator in several processes, including neurotransmission and antimicrobial and antitumoral activities Nitric oxide is synthesized from L-arginine by nitric oxide synthases Variations in this gene are associated with susceptibility to coronary spasm Multiple transcript variants encoding different isoforms have been found for this gene

### Products Images:





Western blot analysis of lysates from COLO cells, using eNOS Antibody. The lane on the right is blocked with the synthesized peptide.