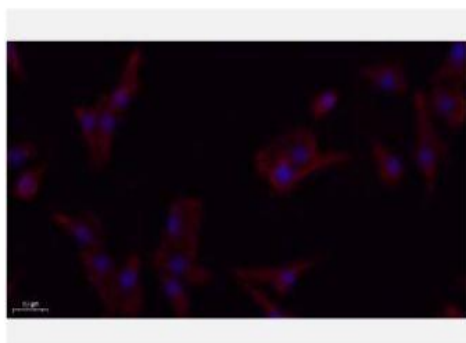


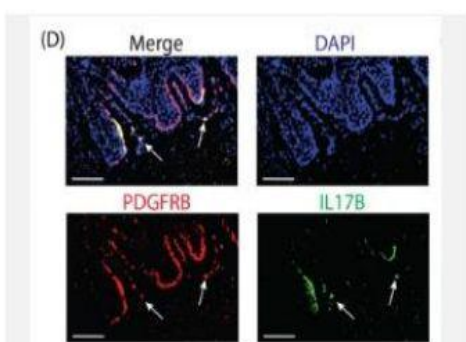
PDGFR-β Polyclonal Antibody

Catalog No.	IPB0266
Reactivity	Human; Mouse; Rat
Applications	WB; IHC-p; IF/ICC; ELISA
Dilution	WB: 1:500-1:2000 IHC-p: 1:100-1:200 ELISA: 1:20000 IF: 1:50-1:200
Gene Name	PDGFRB
Protein Name	Platelet-derived growth factor receptor beta
Human Gene Id	5159
Swiss-Prot	P09619
Formulation	Liquid in PBS containing 50% glycerol, 05% BSA and 002% sodium azide
Source	Rabbit
Purification	The antibody was affinity-purified from rabbit antiserum by affinity-chromatography using epitope-specific immunogen
Concentration	1 mg/ml
Storage&Stability	-20°C/1 year
Subcellular Location	Cell membrane; Single-pass type I membrane protein Cytoplasmic vesicle Lysosome lumen After ligand binding, the autophosphorylated receptor is ubiquitinated and internalized, leading to its degradation
MW	123968
Background	This gene encodes a cell surface tyrosine kinase receptor for members of the platelet-derived growth factor family These growth factors are mitogens for cells of mesenchymal origin The identity of the growth factor bound to a receptor monomer determines whether the functional receptor is a homodimer or a heterodimer, composed of both platelet-derived growth factor receptor alpha and beta polypeptides This gene is flanked on chromosome 5 by the genes for granulocyte-macrophage colony-stimulating factor and macrophage-colony stimulating factor receptor; all three genes may be implicated in the 5-q syndrome A translocation between chromosomes 5 and 12, that fuses this gene to that of the translocation, ETV6, leukemia gene, results in chronic myeloproliferative disorder with eosinophilia

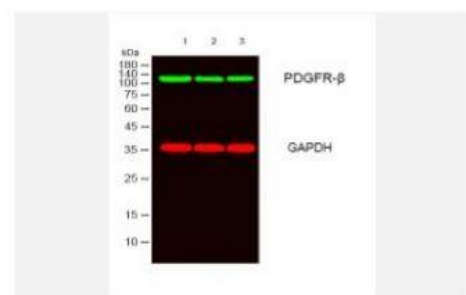
Products Images:



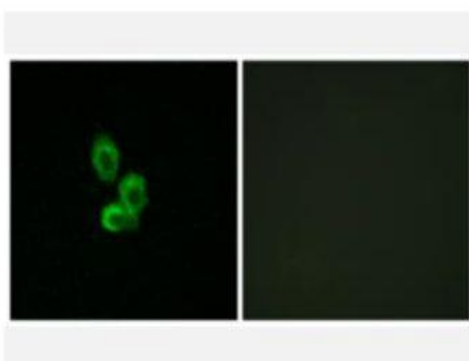
Immunofluorescence analysis of A549. 1,primary Antibody(red) was diluted at 1:200(4°C overnight). 2, Goat Anti Rabbit IgG (H&L) - Alexa Fluor 594 Secondary antibody was diluted at 1:1000(room temperature, 50min).3, Picture B: DAPI(blue) 10min.



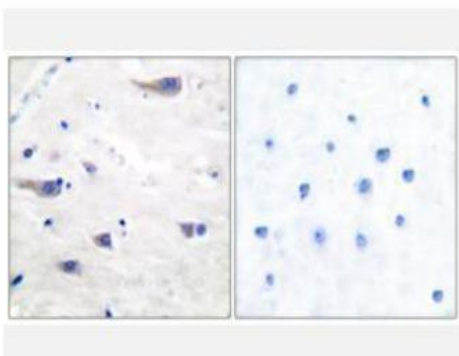
Gao, Y., Yao, X., Zhai, Y. et al. Single cell transcriptional zonation of human psoriasis skin identifies an alternative immunoregulatory axis conducted by skin resident cells. Cell Death Dis 12, 450 (2021).



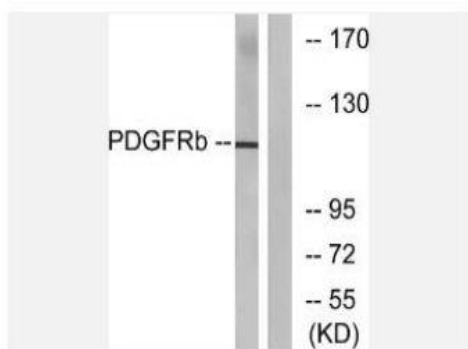
Western blot analysis of lysates from 1) HeLa, 2) K562, 3) KB cells, (Green) primary antibody was diluted at 1:1000, 4° over night, secondary antibody(cat:RS23920)was diluted at 1:10000, 37° 1hour. (Red) GAPDH Monoclonal Antibody(2B8) (cat:YM3029) antibody was diluted at 1:5000 as loading control, 4° over night,secondary antibody(cat:RS23710)was diluted at 1:10000, 37° 1hour.



Immunofluorescence analysis of HepG2 cells, using PDGF Receptor beta Antibody. The picture on the right is blocked with the synthesized peptide.



Immunohistochemistry analysis of paraffin-embedded human brain tissue, using PDGF Receptor beta Antibody. The picture on the right is blocked with the synthesized peptide.



Western blot analysis of lysates from LOVO cells, using PDGF Receptor beta Antibody. The lane on the right is blocked with the synthesized peptide.