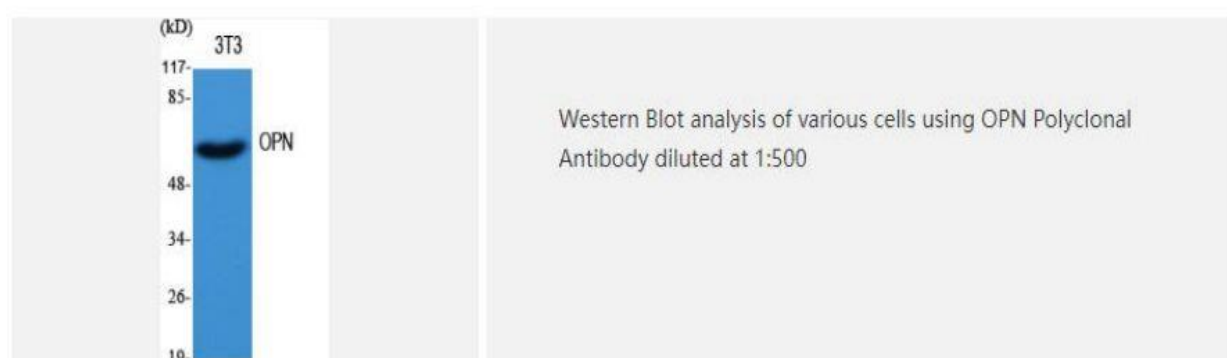
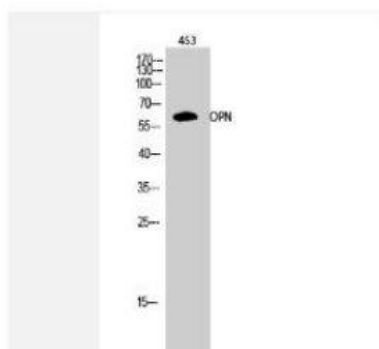


OPN Polyclonal Antibody

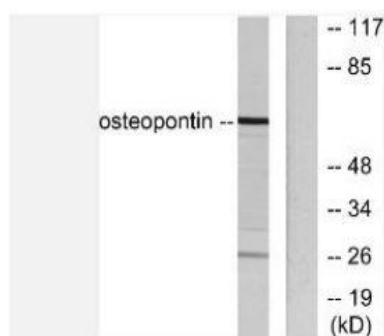
Catalog No.	IPB0265
Reactivity	Human; Mouse; Rat
Applications	WB; IHC-p; ELISA
Dilution	WB: 1:500-1:2000 IHC: 1:50-1:200 ELISA: 1:20000
Gene Name	SPP1
Protein Name	Osteopontin
Human Gene Id	6696
Swiss-Prot	P10451
Formulation	Liquid in PBS containing 50% glycerol, 05% BSA and 002% sodium azide
Source	Rabbit
Purification	The antibody was affinity-purified from rabbit antiserum by affinity-chromatography using epitope-specific immunogen
Concentration	1 mg/ml
Storage&Stability	-20°C/1 year
Subcellular Location	Secreted
MW	35423
Background	The protein encoded by this gene is involved in the attachment of osteoclasts to the mineralized bone matrix The encoded protein is secreted and binds hydroxyapatite with high affinity The osteoclast vitronectin receptor is found in the cell membrane and may be involved in the binding to this protein This protein is also a cytokine that upregulates expression of interferon-gamma and interleukin-12 Several transcript variants encoding different isoforms have been found for this gene

Products Images:





Western Blot analysis of 453 cells using OPN Polyclonal Antibody diluted at 1:500



Western blot analysis of lysates from LOVO cells, using Osteopontin Antibody. The lane on the right is blocked with the synthesized peptide.