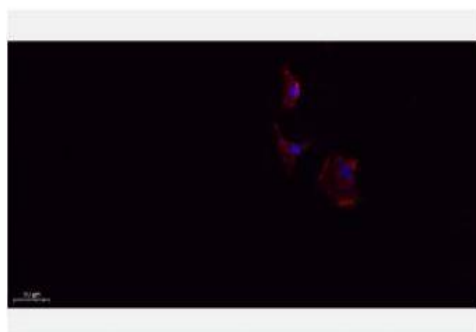


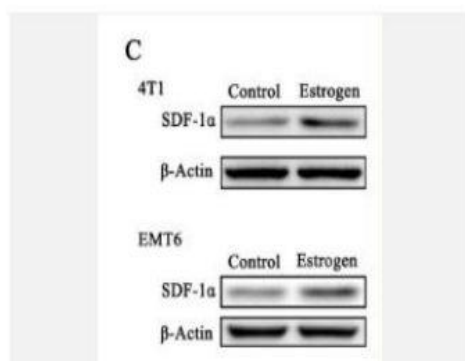
## SDF-1 Polyclonal Antibody

<b>Catalog No.</b>	IPB0259
<b>Reactivity</b>	Human; Mouse; Rat
<b>Applications</b>	IF/ICC; WB; IHC-p; ELISA
<b>Dilution</b>	IF: 1:50-200    WB: 1:500-1:2000    IHC: 1:50-1:200    ELISA: 1:40000
<b>Gene Name</b>	CXCL12
<b>Protein Name</b>	Stromal cell-derived factor 1
<b>Human Gene Id</b>	6387
<b>Swiss-Prot</b>	P48061
<b>Formulation</b>	Liquid in PBS containing 50% glycerol, 05% BSA and 002% sodium azide
<b>Source</b>	Rabbit
<b>Purification</b>	The antibody was affinity-purified from rabbit antiserum by affinity-chromatography using epitope-specific immunogen
<b>Concentration</b>	1 mg/ml
<b>Storage&amp;Stability</b>	-20°C/1 year
<b>Subcellular Location</b>	Secreted
<b>MW</b>	10666
<b>Background</b>	This antimicrobial gene encodes a stromal cell-derived alpha chemokine member of the intercrine family The encoded protein functions as the ligand for the G-protein coupled receptor, chemokine (C-X-C motif) receptor 4, and plays a role in many diverse cellular functions, including embryogenesis, immune surveillance, inflammation response, tissue homeostasis, and tumor growth and metastasis Mutations in this gene are associated with resistance to human immunodeficiency virus type 1 infections Multiple transcript variants encoding different isoforms have been found for this gene

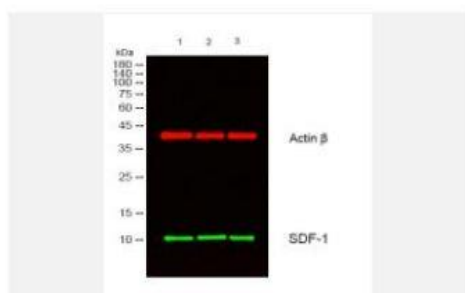
### Products Images:



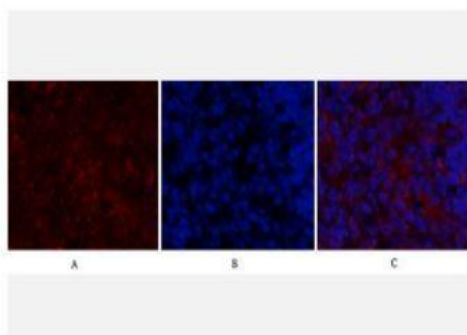
Immunofluorescence analysis of A549. 1,primary Antibody(red) was diluted at 1:200(4°C overnight). 2, Goat Anti Rabbit IgG (H&L) - Alexa Fluor 594 Secondary antibody was diluted at 1:1000(room temperature, 50min).3, Picture B: DAPI(blue) 10min.



Ouyang, Lique, et al. "Estrogen-induced SDF-1α production promotes the progression of ER-negative breast cancer via the accumulation of MDSCs in the tumor microenvironment." Scientific reports 6 (2016): 39541.



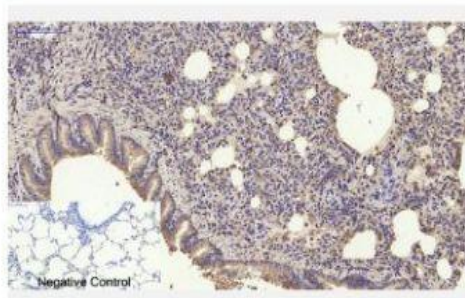
Western blot analysis of lysates from 1) KB, 2) HeLa ,3) MCF-7 cells, (Green) primary antibody was diluted at 1:1000, 4° over night, secondary antibody(cat:RS23920)was diluted at 1:10000, 37° 1hour. (Red) Actin β Monoclonal Antibody(5B7) (cat:YM3028) antibody was diluted at 1:5000 as loading control, 4° over night,secondary antibody(cat:RS23710)was diluted at 1:10000, 37° 1hour.



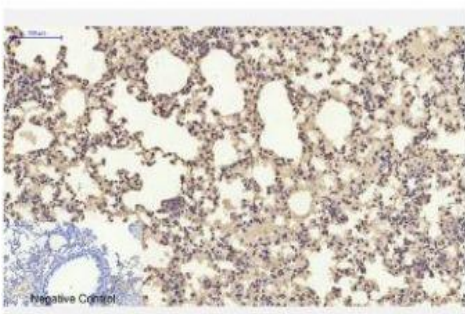
Immunofluorescence analysis of rat-spleen tissue. 1,SDF-1 Polyclonal Antibody(red) was diluted at 1:200(4°C,overnight). 2, Cy3 labeled Secondary antibody was diluted at 1:300(room temperature, 50min).3, Picture B: DAPI(blue) 10min. Picture A:Target. Picture B: DAPI. Picture C: merge of A+B



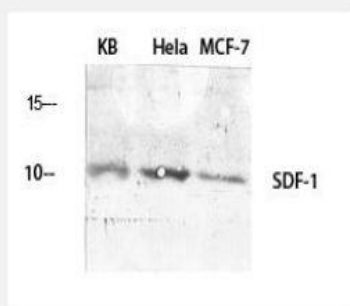
Immunohistochemical analysis of paraffin-embedded Human-uterus tissue. 1,SDF-1 Polyclonal Antibody was diluted at 1:200(4°C,overnight). 2, Sodium citrate pH 6.0 was used for antibody retrieval(>98°C,20min). 3,Secondary antibody was diluted at 1:200(room temperature, 30min). Negative control was used by secondary antibody only.



Immunohistochemical analysis of paraffin-embedded Rat-lung tissue. 1, SDF-1 Polyclonal Antibody was diluted at 1:200 (4°C, overnight). 2, Sodium citrate pH 6.0 was used for antibody retrieval (>98°C, 20min). 3, Secondary antibody was diluted at 1:200 (room temperature, 30min). Negative control was used by secondary antibody only.



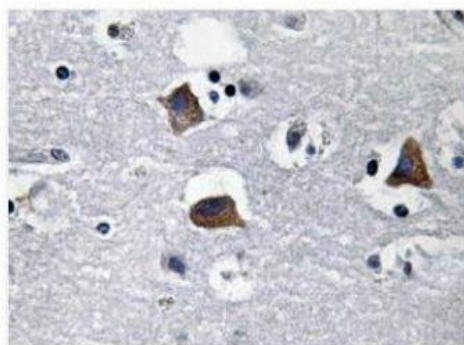
Immunohistochemical analysis of paraffin-embedded Mouse-lung tissue. 1, SDF-1 Polyclonal Antibody was diluted at 1:200 (4°C, overnight). 2, Sodium citrate pH 6.0 was used for antibody retrieval (>98°C, 20min). 3, Secondary antibody was diluted at 1:200 (room temperature, 30min). Negative control was used by secondary antibody only.



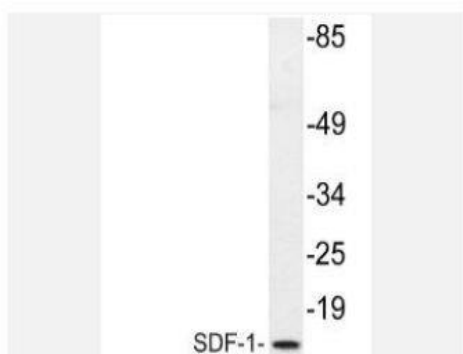
Western Blot analysis of various cells using SDF-1 Polyclonal Antibody diluted at 1:2000



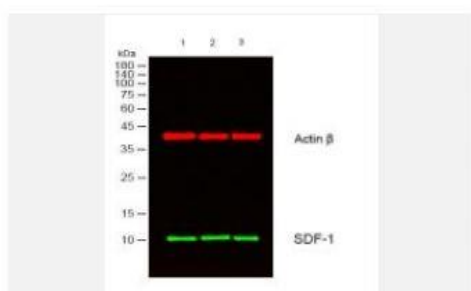
Western Blot analysis of HepG2 cells using SDF-1 Polyclonal Antibody diluted at 1:2000



Immunohistochemistry analysis of SDF-1 antibody in paraffin-embedded human brain tissue.



Western blot analysis of lysate from HepG2 cells, using SDF-1 antibody.



Western blot analysis of lysates from 1) KB, 2) HeLa, 3) MCF-7 cells, (Green) primary antibody was diluted at 1:1000, 4° over night, secondary antibody(cat:RS23920) was diluted at 1:10000, 37° 1 hour. (Red) Actin  $\beta$  Monoclonal Antibody(5B7) (cat:YM3028) antibody was diluted at 1:5000 as loading control, 4° over night, secondary antibody(cat:RS23710) was diluted at 1:10000, 37° 1 hour.