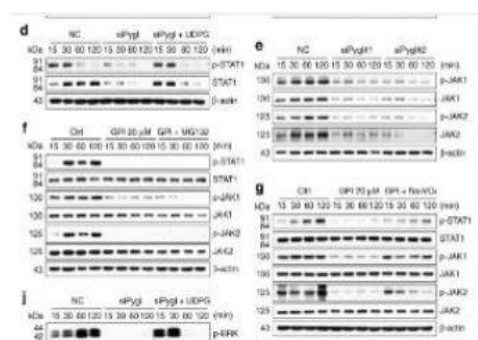


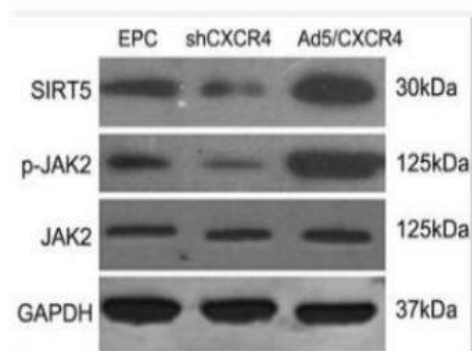
## JAK2 Polyclonal Antibody

<b>Catalog No.</b>	IPB0227
<b>Reactivity</b>	Human; Mouse; Rat
<b>Applications</b>	WB; IHC-p; ELISA
<b>Dilution</b>	WB: 1:500-1:2000    IHC: 1:50-1:200    ELISA: 1:20000
<b>Gene Name</b>	JAK2
<b>Protein Name</b>	Tyrosine-protein kinase JAK2
<b>Human Gene Id</b>	3717
<b>Swiss-Prot</b>	O60674
<b>Formulation</b>	Liquid in PBS containing 50% glycerol, 05% BSA and 002% sodium azide
<b>Source</b>	Rabbit
<b>Purification</b>	The antibody was affinity-purified from rabbit antiserum by affinity-chromatography using epitope-specific immunogen
<b>Concentration</b>	1 mg/ml
<b>Storage&amp;Stability</b>	-20°C/1 year
<b>Subcellular Location</b>	Endomembrane system; Peripheral membrane protein Cytoplasm Nucleus
<b>MW</b>	130674
<b>Background</b>	This gene product is a protein tyrosine kinase involved in a specific subset of cytokine receptor signaling pathways It has been found to be constitutively associated with the prolactin receptor and is required for responses to gamma interferon Mice that do not express an active protein for this gene exhibit embryonic lethality associated with the absence of definitive erythropoiesis

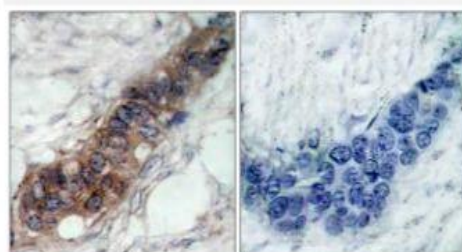
### Products Images:



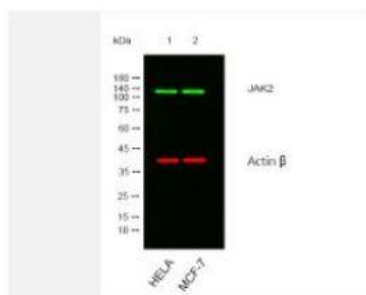
Ma, J., Wei, K., Liu, J. et al. Glycogen metabolism regulates macrophage-mediated acute inflammatory responses. *Nat Commun* 11, 1769 (2020).



Yu, Bing-Bo, et al. "Mitochondrial dysfunction-mediated decline in angiogenic capacity of endothelial progenitor cells is associated with capillary rarefaction in patients with hypertension via downregulation of CXCR4/JAK2/SIRT5 signaling." *EBioMedicine* (2019).



Immunohistochemistry analysis of paraffin-embedded human breast carcinoma tissue, using JAK2 Antibody. The picture on the right is blocked with the synthesized peptide.



Western blot analysis of lysates from HeLa, MCF-7 cells, (Green) primary antibody was diluted at 1:1000, 4° over night, secondary antibody was diluted at 1:10000, 37° 1 hour. (Red) loading control antibody was diluted at 1:5000 as loading control, 4° over night, secondary antibody was diluted at 1:10000, 37° 1 hour.