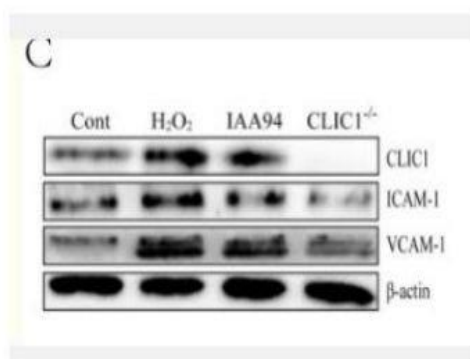


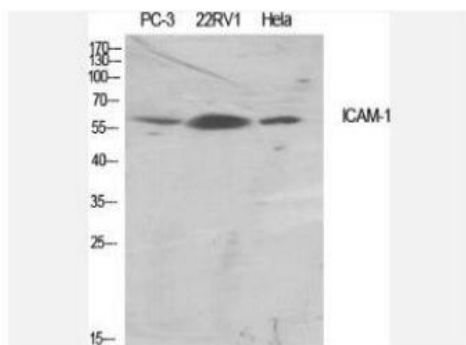
ICAM-1 Polyclonal Antibody

Catalog No.	IPB0220
Reactivity	Human; Mouse; Rat
Applications	WB; ELISA
Dilution	WB: 1:500-1:2000 ELISA: 1:10000
Gene Name	ICAM1
Protein Name	Intercellular adhesion molecule 1
Human Gene Id	3383
Swiss-Prot	P05362
Formulation	Liquid in PBS containing 50% glycerol, 05% BSA and 002% sodium azide
Source	Rabbit
Purification	The antibody was affinity-purified from rabbit antiserum by affinity-chromatography using epitope-specific immunogen
Concentration	1 mg/ml
Storage&Stability	-20°C/1 year
Subcellular Location	Membrane; Single-pass type I membrane protein
MW	57825
Background	This gene encodes a cell surface glycoprotein which is typically expressed on endothelial cells and cells of the immune system It binds to integrins of type CD11a : CD18, or CD11b : CD18 and is also exploited by Rhinovirus as a receptor

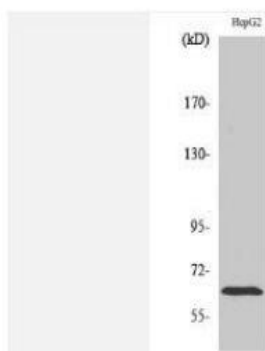
Products Images:



Xu, Yingling, et al. "CLIC1 inhibition attenuates vascular inflammation, oxidative stress, and endothelial injury." *PloS one* 11.11 (2016): e0166790.



Western Blot analysis of various cells using ICAM-1 Polyclonal Antibody diluted at 1:500



Western Blot analysis of HepG2 cells using ICAM-1 Polyclonal Antibody diluted at 1:500