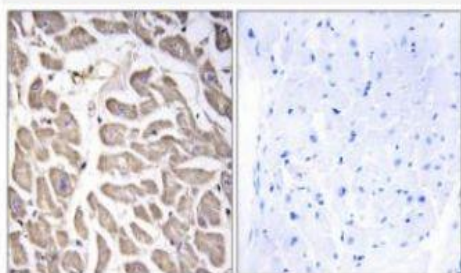


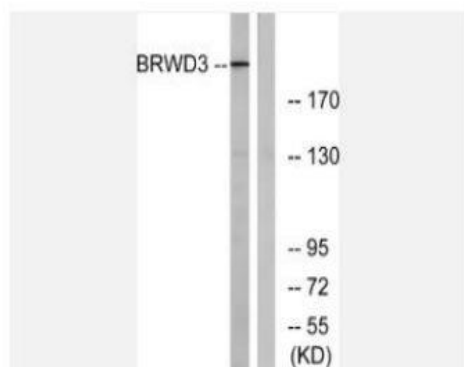
BRWD3 Polyclonal Antibody

Catalog No.	IPB0202
Reactivity	Human; Mouse;
Applications	WB; IHC-p; ELISA
Dilution	WB: 1:500-1:2000 IHC: 1:50-1:200 ELISA: 1:40000
Gene Name	BRWD3
Protein Name	Bromodomain and WD repeat-containing protein 3
Human Gene Id	254065
Swiss-Prot	Q6RI45
Formulation	Liquid in PBS containing 50% glycerol, 05% BSA and 002% sodium azide
Source	Rabbit
Purification	The antibody was affinity-purified from rabbit antiserum by affinity-chromatography using epitope-specific immunogen
Concentration	1 mg/ml
Storage&Stability	-20°C/1 year
Subcellular Location	nucleus,
MW	203626
Background	The protein encoded by this gene contains a bromodomain and several WD repeats It is thought to have a chromatin-modifying function, and may thus play a role in transcription Mutations in this gene cause mental retardation X-linked type 93, which is also referred to as mental retardation X-linked with macrocephaly This gene is also associated with translocations in patients with B-cell chronic lymphocytic leukemia

Products Images:



Immunohistochemistry analysis of paraffin-embedded human heart tissue, using BRWD3 Antibody. The picture on the right is blocked with the synthesized peptide.



Western blot analysis of lysates from COLO cells, using BRWD3 Antibody. The lane on the right is blocked with the synthesized peptide.