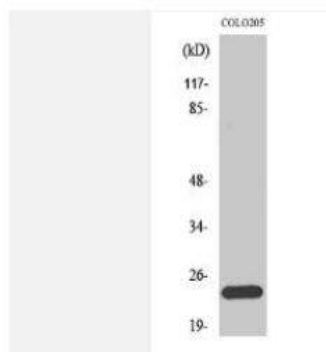


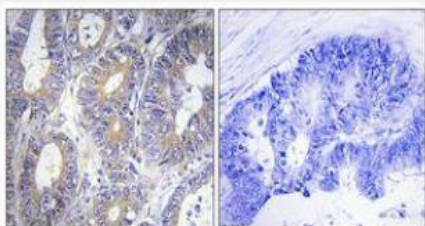
Bcl-w Polyclonal Antibody

Catalog No.	IPB0201
Reactivity	Human; Mouse; Rat
Applications	WB; IHC-p; IF/ICC; ELISA
Dilution	WB: 1:500-1:2000 IHC: 1:50-1:200 IF: 1:50-1:200 ELISA: 1:10000
Gene Name	BCL2L2
Protein Name	Bcl-2-like protein 2
Human Gene Id	599
Swiss-Prot	Q92843
Formulation	Liquid in PBS containing 50% glycerol, 05% BSA and 002% sodium azide
Source	Rabbit
Purification	The antibody was affinity-purified from rabbit antiserum by affinity-chromatography using epitope-specific immunogen
Concentration	1 mg/ml
Storage&Stability	-20°C/1 year
Subcellular Location	Mitochondrion membrane; Peripheral membrane protein Loosely associated with the mitochondrial membrane in healthy cells During apoptosis, tightly bound to the membrane
MW	20774
Background	This gene encodes a member of the BCL-2 protein family The proteins of this family form hetero- or homodimers and act as anti- and pro-apoptotic regulators Expression of this gene in cells has been shown to contribute to reduced cell apoptosis under cytotoxic conditions Studies of the related gene in mice indicated a role in the survival of NGF- and BDNF-dependent neurons Mutation and knockout studies of the mouse gene demonstrated an essential role in adult spermatogenesis Alternative splicing results in multiple transcript variants Read-through transcription also exists between this gene and the neighboring downstream PABPN1 (poly(A) binding protein, nuclear 1) gene

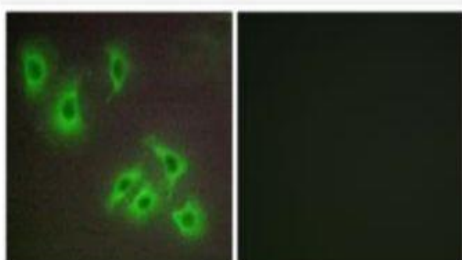
Products Images:



Western Blot analysis of various cells using Bcl-w Polyclonal Antibody diluted at 1:2000



Immunohistochemical analysis of paraffin-embedded Human colon cancer. Antibody was diluted at 1:100(4° overnight). High-pressure and temperature Tris-EDTA,pH8.0 was used for antigen retrieval. Negative contrl (right) obtained from antibody was pre-absorbed by immunogen peptide.



Immunofluorescence analysis of HepG2 cells, using BCLW Antibody. The picture on the right is blocked with the synthesized peptide.