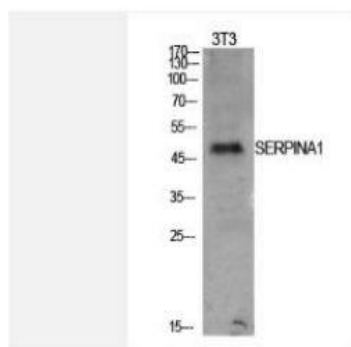


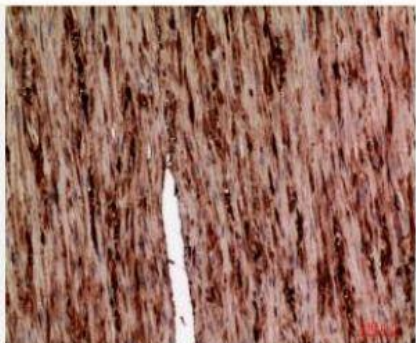
AAT Polyclonal Antibody

| | |
|------------------------------|---|
| Catalog No. | IPB0196 |
| Reactivity | Human; Mouse; Rat |
| Applications | WB; IHC-p; ELISA |
| Dilution | WB: 1:500-1:2000 IHC-p: 1:100-1:200 ELISA: 1:10000 |
| Gene Name | SERPINA1 |
| Protein Name | Alpha-1-antitrypsin |
| Human Gene Id | 5265 |
| Swiss-Prot | P01009 |
| Formulation | Liquid in PBS containing 50% glycerol, 05% BSA and 002% sodium azide |
| Source | Rabbit |
| Purification | The antibody was affinity-purified from rabbit antiserum by affinity-chromatography using epitope-specific immunogen |
| Concentration | 1 mg/ml |
| Storage&Stability | -20°C/1 year |
| Subcellular Location | Secreted Endoplasmic reticulum The S and Z allele are not secreted effectively and accumulate intracellularly in the endoplasmic reticulum [Short peptide from AAT]: Secreted, extracellular space, extracellular matrix |
| MW | 46737 |
| Background | The protein encoded by this gene is secreted and is a serine protease inhibitor whose targets include elastase, plasmin, thrombin, trypsin, chymotrypsin, and plasminogen activator Defects in this gene can cause emphysema or liver disease Several transcript variants encoding the same protein have been found for this gene |

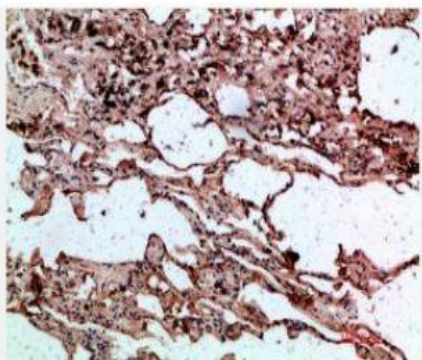
Products Images:



Western Blot analysis of NIH-3T3 cells using AAT Polyclonal Antibody. Secondary antibody(catalog#:RS0002) was diluted at 1:20000



Immunohistochemical analysis of paraffin-embedded human-colon, antibody was diluted at 1:100



Immunohistochemical analysis of paraffin-embedded human-lung, antibody was diluted at 1:200