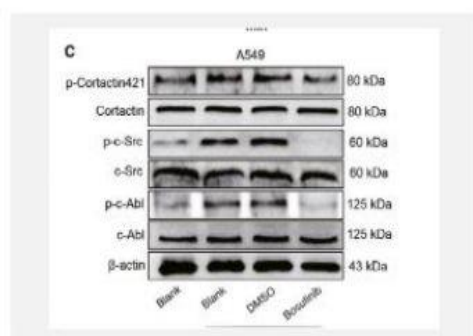


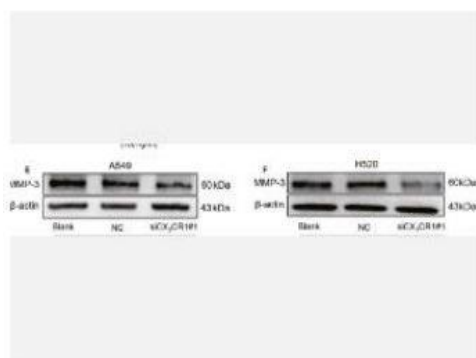
MMP-3 Polyclonal Antibody

Catalog No.	IPB0186
Reactivity	Human; Mouse; Rat
Applications	WB; IHC-p; IF/ICC; ELISA
Dilution	WB: 1:500-1:2000 IHC: 1:50-1:200 IF: 1:50-1:200 ELISA: 1:10000
Gene Name	MMP3
Protein Name	Stromelysin-1
Human Gene Id	4314
Swiss-Prot	P08254
Formulation	Liquid in PBS containing 50% glycerol, 05% BSA and 002% sodium azide
Source	Rabbit
Purification	The antibody was affinity-purified from rabbit antiserum by affinity-chromatography using epitope-specific immunogen
Concentration	1 mg/ml
Storage&Stability	-20°C/1 year
Subcellular Location	Secreted, extracellular space, extracellular matrix
MW	53977
Background	Proteins of the matrix metalloproteinase (MMP) family are involved in the breakdown of extracellular matrix in normal physiological processes, such as embryonic development, reproduction, and tissue remodeling, as well as in disease processes, such as arthritis and metastasis Most MMP's are secreted as inactive proproteins which are activated when cleaved by extracellular proteinases This gene encodes an enzyme which degrades fibronectin, laminin, collagens III, IV, IX, and X, and cartilage proteoglycans The enzyme is thought to be involved in wound repair, progression of atherosclerosis, and tumor initiation The gene is part of a cluster of MMP genes which localize to chromosome 11q223

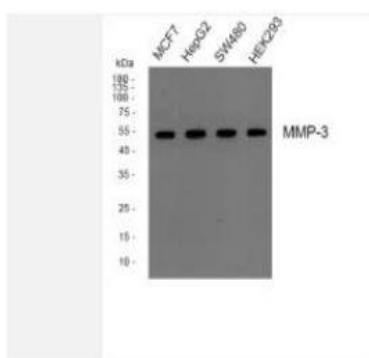
Products Images:



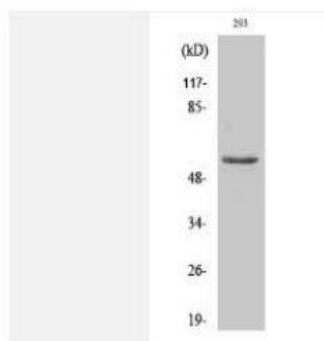
Fan, Mengtian, et al. "CX3CL1 promotes tumour cell by inducing tyrosine phosphorylation of cortactin in lung cancer." *Journal of Cellular and Molecular Medicine* 25.1 (2021): 132-146.



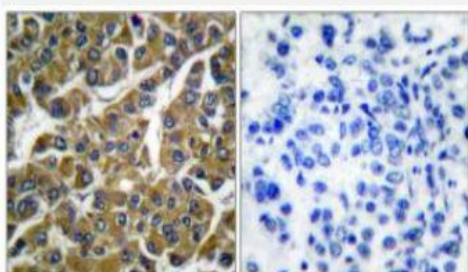
Fan, Mengtian, et al. "CX3CL1 promotes tumour cell by inducing tyrosine phosphorylation of cortactin in lung cancer." *Journal of Cellular and Molecular Medicine* 25.1 (2021): 132-146.



Western blot analysis of MMP-3 Polyclonal Antibody, using HepG2, MCF7, SW480, HEK293 cell, 4° over night, secondary antibody (cat: RS0002) was diluted at 1:10000, 37° 1 hour.



Western Blot analysis of 293 cells using MMP-3 Polyclonal Antibody diluted at 1:2000



Immunohistochemistry analysis of paraffin-embedded human breast carcinoma tissue, using MMP-3 Antibody. The picture on the right is blocked with the synthesized peptide.

