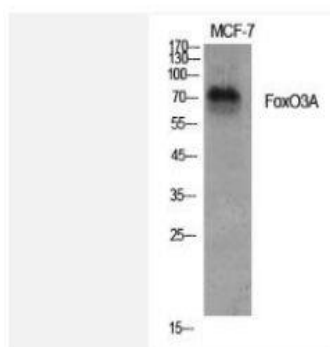


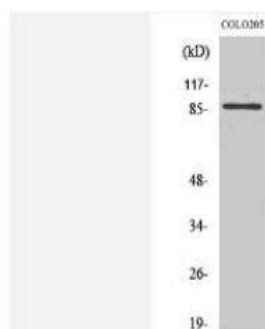
FoxO3A Polyclonal Antibody

Catalog No.	IPB0181
Reactivity	Human; Mouse; Rat
Applications	WB; IHC-p; IF/ICC; ELISA
Dilution	WB: 1:500-1:2000 IHC: 1:50-1:200 IF: 1:50-1:200 ELISA: 1:20000
Gene Name	FOXO3
Protein Name	Forkhead box protein O3
Human Gene Id	2309
Swiss-Prot	O43524
Formulation	Liquid in PBS containing 50% glycerol, 05% BSA and 002% sodium azide
Source	Rabbit
Purification	The antibody was affinity-purified from rabbit antiserum by affinity-chromatography using epitope-specific immunogen
Concentration	1 mg/ml
Storage&Stability	-20°C/1 year
Subcellular Location	Cytoplasm, cytosol Nucleus Mitochondrion matrix Mitochondrion outer membrane; Peripheral membrane protein; Cytoplasmic side Retention in the cytoplasm contributes to its inactivation (PubMed:10102273, PubMed:15084260, PubMed:16751106) Translocates to the nucleus upon oxidative stress and in the absence of survival factors (PubMed:10102273, PubMed:16751106) Translocates from the cytosol to the nucleus following dephosphorylation in response to autophagy-inducing stimuli (By similarity) Translocates in a AMPK-dependent manner into the mitochondrion in response to metabolic stress (PubMed:23283301, PubMed:29445193) Serum deprivation increases localization to the nucleus, leading to activate expression of SOX9 and subsequent chondrogenesis (By similarity)
MW	71277
Background	This gene belongs to the forkhead family of transcription factors which are characterized by a distinct forkhead domain This gene likely functions as a trigger for apoptosis through expression of genes necessary for cell death Translocation of this gene with the MLL gene is associated with secondary acute leukemia Alternatively spliced transcript variants encoding the same protein have been observed

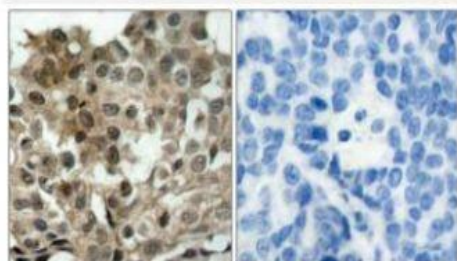
Products Images:



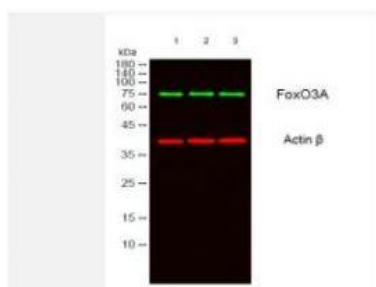
Western Blot analysis of various cells using FoxO3A Polyclonal Antibody diluted at 1:1000



Western Blot analysis of Jurkat cells using FoxO3A Polyclonal Antibody diluted at 1:1000



Immunohistochemistry analysis of paraffin-embedded human breast carcinoma tissue, using FKHRL1 Antibody. The picture on the right is blocked with the synthesized peptide.



Western blot analysis of lysates from 1) MCF-7, 2) COLO205, 3) HELA cells, (Green) primary antibody was diluted at 1:1000, 4° over night, secondary antibody (cat:RS23920) was diluted at 1:10000, 37° 1 hour. (Red) Actin β Monoclonal Antibody (5B7) (cat:YM3028) antibody was diluted at 1:5000 as loading control, 4° over night, secondary antibody (cat:RS23710) was diluted at 1:10000, 37° 1 hour.