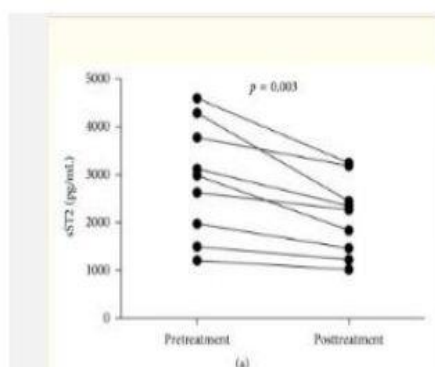


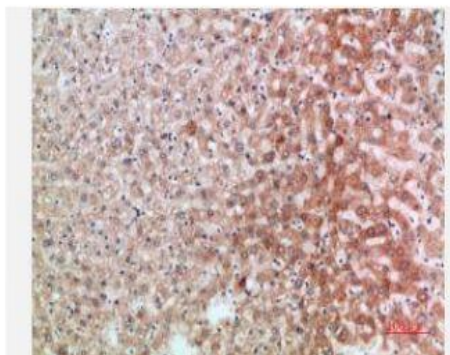
ST2 Polyclonal Antibody

Catalog No.	IPB0162
Reactivity	Human; Mouse; Rat
Applications	IHC-p; ELISA
Dilution	IHC-p: 1:100-1:200 ELISA: 1:10000-20000
Gene Name	IL1RL1 DER4 ST2 T1
Protein Name	Interleukin-1 receptor-like 1 (Protein ST2)
Human Gene Id	9173
Swiss-Prot	Q01638
Formulation	Liquid in PBS containing 50% glycerol, 05% BSA and 002% sodium azide
Source	Rabbit
Purification	The antibody was affinity-purified from rabbit antiserum by affinity-chromatography using epitope-specific immunogen
Concentration	1 mg/ml
Storage&Stability	-20°C/1 year
Subcellular Location	[Isoform C]: Cell membrane [Isoform B]: Secreted Cell membrane; Single-pass type I membrane protein
MW	-
Background	The protein encoded by this gene is a member of the interleukin 1 receptor family. Studies of the similar gene in mouse suggested that this receptor can be induced by proinflammatory stimuli, and may be involved in the function of helper T cells. This gene, interleukin 1 receptor, type I (IL1R1), interleukin 1 receptor, type II (IL1R2) and interleukin 1 receptor-like 2 (IL1RL2) form a cytokine receptor gene cluster in a region mapped to chromosome 2q12. Alternative splicing of this gene results in multiple transcript variants.

Products Images:



Zhang, Zhihui, et al. "Serum levels of soluble ST2 and IL-10 are associated with disease severity in patients with IgA nephropathy." *Journal of immunology research* 2016 (2016).



Immunohistochemical analysis of paraffin-embedded human-liver, antibody was diluted at 1:200