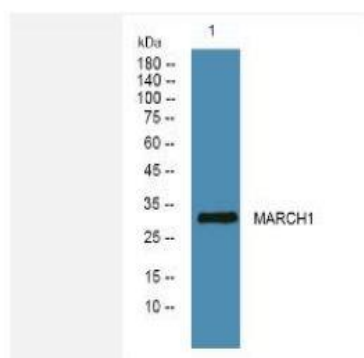


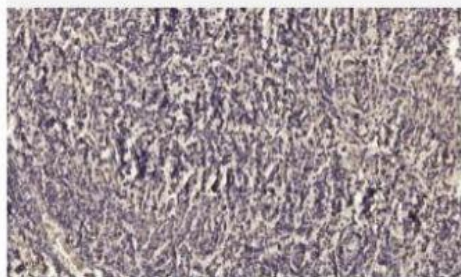
## MARCH1 Polyclonal Antibody

<b>Catalog No.</b>	IPB0156
<b>Reactivity</b>	Human; Mouse; Rat
<b>Applications</b>	WB; IHC-p; ELISA
<b>Dilution</b>	WB: 1:500-2000    IHC: 1:50-1:200    ELISA: 1:40000
<b>Gene Name</b>	MARCH1
<b>Protein Name</b>	E3 ubiquitin-protein ligase MARCH1
<b>Human Gene Id</b>	55016
<b>Swiss-Prot</b>	Q8TCQ1
<b>Formulation</b>	Liquid in PBS containing 50% glycerol, 05% BSA and 002% sodium azide
<b>Source</b>	Rabbit
<b>Purification</b>	The antibody was affinity-purified from rabbit antiserum by affinity-chromatography using epitope-specific immunogen
<b>Concentration</b>	1 mg/ml
<b>Storage&amp;Stability</b>	-20°C/1 year
<b>Subcellular Location</b>	Golgi apparatus, trans-Golgi network membrane; Multi-pass membrane protein Lysosome membrane; Multi-pass membrane protein Cytoplasmic vesicle membrane; Multi-pass membrane protein Late endosome membrane; Multi-pass membrane protein Early endosome membrane; Multi-pass membrane protein Cell membrane; Multi-pass membrane protein
<b>MW</b>	32308
<b>Background</b>	MARCH1 is a member of the MARCH family of membrane-bound E3 ubiquitin ligases (EC 63219) MARCH proteins add ubiquitin (see MIM 191339) to target lysines in substrate proteins, thereby signaling their vesicular transport between membrane compartments MARCH1 downregulates the surface expression of major histocompatibility complex (MHC) class II molecules (see MIM 142880) and other glycoproteins by directing them to the late endosomal:lysosomal compartment (Bartee et al, 2004 [PubMed 14722266]; Thibodeau et al, 2008 [PubMed 18389477]; De Gassart et al, 2008 [PubMed 18305173])

### Products Images:



Western blot analysis of lysates from DU145 cells, primary antibody was diluted at 1:1000, 4° over night



Immunohistochemical analysis of paraffin-embedded human meningioma. 1, Antibody was diluted at 1:200(4° overnight). 2, Tris-EDTA,pH9.0 was used for antigen retrieval. 3,Secondary antibody was diluted at 1:200(room temperature, 45min).