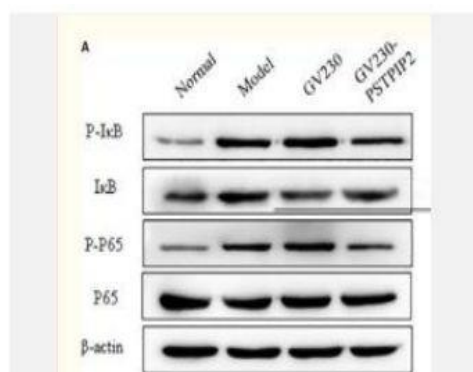


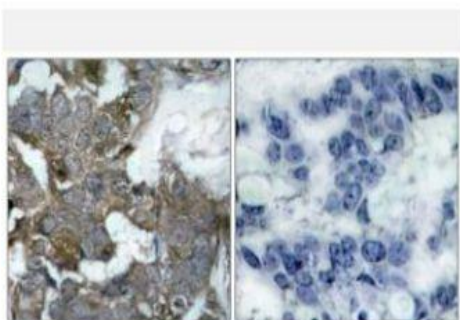
I κ B- α Polyclonal Antibody

Catalog No.	IPB0154
Reactivity	Human; Mouse; Rat
Applications	WB; IHC-p; IF/ICC; ELISA
Dilution	WB: 1:500-1:2000 IHC: 1:50-1:200 IF: 1:50-1:200 ELISA: 1:10000
Gene Name	NFKBIA
Protein Name	NF-kappa-B inhibitor alpha
Human Gene Id	4792
Swiss-Prot	P25963
Formulation	Liquid in PBS containing 50% glycerol, 05% BSA and 002% sodium azide
Source	Rabbit
Purification	The antibody was affinity-purified from rabbit antiserum by affinity-chromatography using epitope-specific immunogen
Concentration	1 mg/ml
Storage&Stability	-20°C/1 year
Subcellular Location	Cytoplasm Nucleus Shuttles between the nucleus and the cytoplasm by a nuclear localization signal (NLS) and a CRM1-dependent nuclear export
MW	35609
Background	This gene encodes a member of the NF-kappa-B inhibitor family, which contain multiple ankrin repeat domains The encoded protein interacts with REL dimers to inhibit NF-kappa-B:REL complexes which are involved in inflammatory responses The encoded protein moves between the cytoplasm and the nucleus via a nuclear localization signal and CRM1-mediated nuclear export Mutations in this gene have been found in ectodermal dysplasia anhidrotic with T-cell immunodeficiency autosomal dominant disease

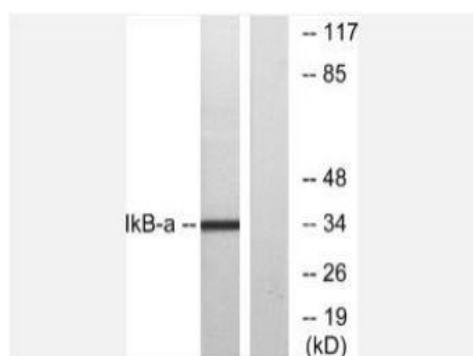
Products Images:



Yao, Yao, et al. "PSTPIP2 inhibits the inflammatory response and proliferation of fibroblast-like synoviocytes in vitro." *Frontiers in pharmacology* 9 (2018): 1432.



Immunohistochemistry analysis of paraffin-embedded human breast carcinoma tissue, using IkappaB-alpha Antibody. The picture on the right is blocked with the synthesized peptide.



Western blot analysis of lysates from MCF7 cells, treated with TNF- α , using IkappaB-alpha Antibody. The lane on the right is blocked with the synthesized peptide.