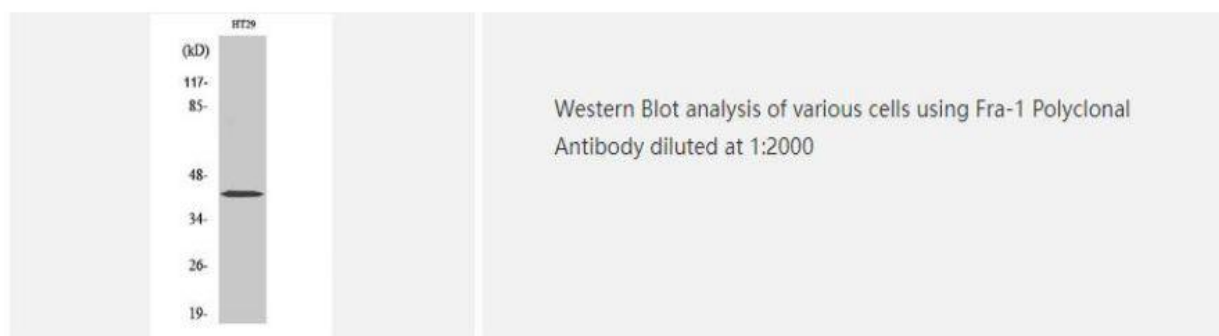
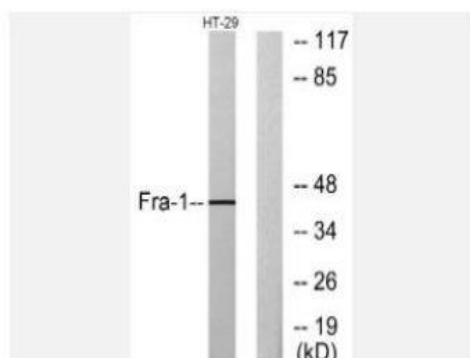


## Fra-1 Polyclonal Antibody

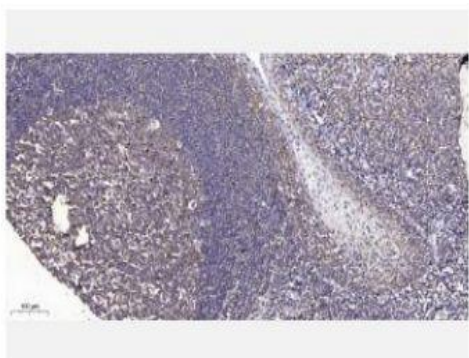
<b>Catalog No.</b>	IPB0151
<b>Reactivity</b>	Human; Mouse; Rat
<b>Applications</b>	WB; IHC-p; ELISA
<b>Dilution</b>	WB: 1:500-1:2000    IHC: 1:50-1:200    ELISA: 1:20000
<b>Gene Name</b>	FOSL1
<b>Protein Name</b>	Fos-related antigen 1
<b>Human Gene Id</b>	8061
<b>Swiss-Prot</b>	P15407
<b>Formulation</b>	Liquid in PBS containing 50% glycerol, 05% BSA and 002% sodium azide
<b>Source</b>	Rabbit
<b>Purification</b>	The antibody was affinity-purified from rabbit antiserum by affinity-chromatography using epitope-specific immunogen
<b>Concentration</b>	1 mg/ml
<b>Storage&amp;Stability</b>	-20°C/1 year
<b>Subcellular Location</b>	Nucleus
<b>MW</b>	29413
<b>Background</b>	The Fos gene family consists of 4 members: FOS, FOSB, FOSL1, and FOSL2 These genes encode leucine zipper proteins that can dimerize with proteins of the JUN family, thereby forming the transcription factor complex AP-1 As such, the FOS proteins have been implicated as regulators of cell proliferation, differentiation, and transformation Several transcript variants encoding different isoforms have been found for this gene

### Products Images:





Western blot analysis of lysates from HT-29 cells, using Fra-1 Antibody. The lane on the right is blocked with the synthesized peptide.



Immunohistochemical analysis of paraffin-embedded human tonsil. 1, Antibody was diluted at 1:200(4° overnight). 2, Tris-EDTA,pH9.0 was used for antigen retrieval. 3,Secondary antibody was diluted at 1:200(room temperature, 45min).