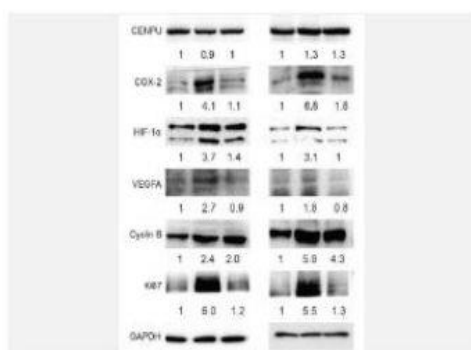


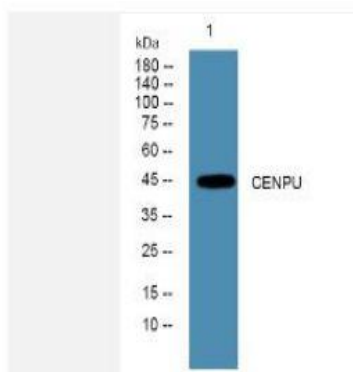
CENPU Polyclonal Antibody

Catalog No.	IPB0148
Reactivity	Human; Mouse; Rat
Applications	WB; ELISA
Dilution	WB: 1:500-2000 ELISA: 1:5000-20000
Gene Name	MLF1IP CENPU ICEN24 KLIP1 PBIP1
Protein Name	Centromere protein U (CENP-U) (Interphase centromere complex protein 24) (KSHV latent nuclear antigen-interacting protein 1) (MLF1-interacting protein) (Polo-box-interacting protein 1) (centromere protein of 50 kDa) (CENP-50)
Human Gene Id	79682
Swiss-Prot	Q71F23
Formulation	Liquid in PBS containing 50% glycerol, and 0.02% sodium azide
Source	Rabbit
Purification	The antibody was affinity-purified from rabbit antiserum by affinity-chromatography using epitope-specific immunogen
Concentration	1 mg/ml
Storage&Stability	-20°C/1 year
Subcellular Location	Cytoplasm Nucleus Chromosome, centromere, kinetochore Localizes in the kinetochore domain of centromeres Colocalizes with PLK1 at the interzone between the inner and the outer kinetochore plates
MW	-
Background	The centromere is a specialized chromatin domain, present throughout the cell cycle, that acts as a platform on which the transient assembly of the kinetochore occurs during mitosis All active centromeres are characterized by the presence of long arrays of nucleosomes in which CENPA (MIM 117139) replaces histone H3 (see MIM 601128) MLF1IP, or CENPU, is an additional factor required for centromere assembly (Foltz et al, 2006 [PubMed 16622419])

Products Images:



Zhao, Shaorong et al. "Deciphering the performance of polo-like kinase 1 in triple-negative breast cancer progression according to the centromere protein U-phosphorylation pathway." American journal of cancer research vol. 11,5 2142-2158. 15 May. 2021



Western blot analysis of lysates from SH-SY5Y cells, primary antibody was diluted at 1:1000, 4° over night