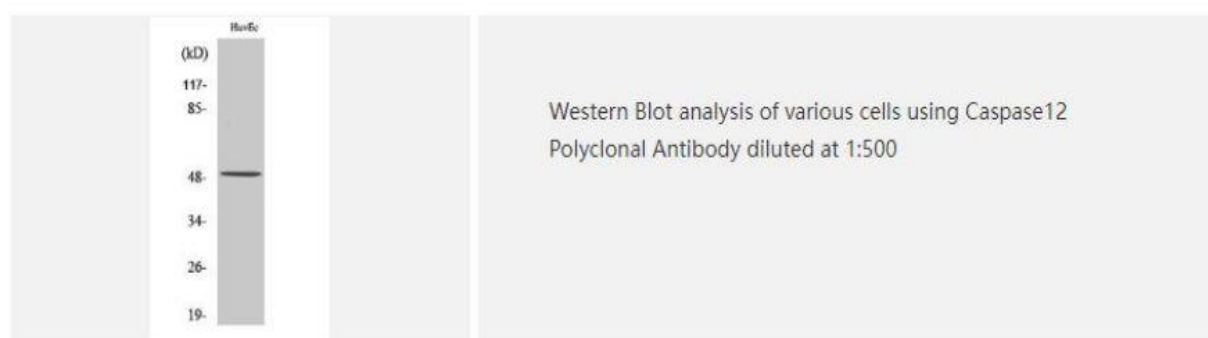
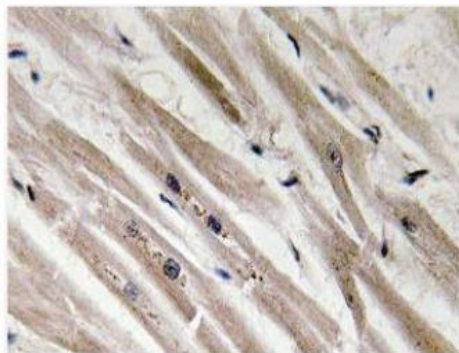


Caspase12 Polyclonal Antibody

Catalog No.	IPB0146
Reactivity	Human; Mouse; Rat
Applications	WB; IHC-p; ELISA
Dilution	WB: 1:500-1:2000 IHC: 1:50-1:200 ELISA: 1:40000
Gene Name	CASP12
Protein Name	caspase12
Human Gene Id	120329
Swiss-Prot	Q6UXS9
Formulation	Liquid in PBS containing 50% glycerol, 05% BSA and 002% sodium azide
Source	Rabbit
Purification	The antibody was affinity-purified from rabbit antiserum by affinity-chromatography using epitope-specific immunogen
Concentration	1 mg/ml
Storage&Stability	-20°C/1 year
Subcellular Location	endoplasmic reticulum,IPAF inflammasome complex,NLRP3 inflammasome complex,AIM2 inflammasome complex,
MW	38907/29429
Background	Caspases are cysteine proteases that cleave C-terminal aspartic acid residues on their substrate molecules This gene is most highly related to members of the ICE subfamily of caspases that process inflammatory cytokines In rodents, the homolog of this gene mediates apoptosis in response to endoplasmic reticulum stress However, in humans this gene contains a polymorphism for the presence or absence of a premature stop codon The majority of human individuals have the premature stop codon and produce a truncated non-functional protein The read-through codon occurs primarily in individuals of African descent and carriers have endotoxin hypo-responsiveness and an increased susceptibility to severe sepsis Several alternatively spliced transcript variants have been noted for this gene

Products Images:





Immunohistochemistry analysis of Caspase12 antibody in paraffin-embedded human heart tissue.



Western blot analysis of lysate from HUVEC cells, using Caspase12 antibody.