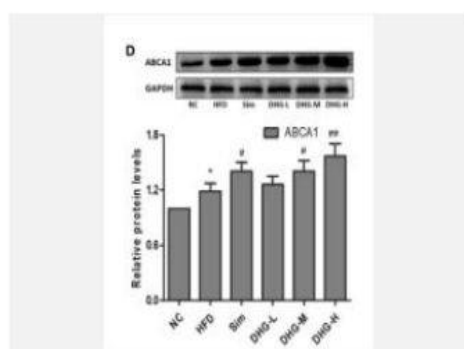


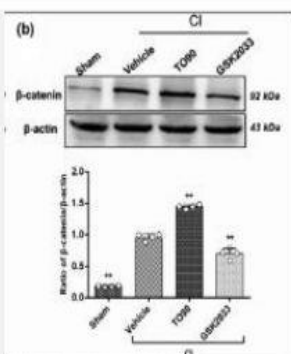
ABCA1 Polyclonal Antibody

Catalog No.	IPB0142
Reactivity	Human; Mouse;
Applications	WB; ELISA
Dilution	WB: 1:500-2000 ELISA: 1:5000-20000
Gene Name	ABCA1 ABC1 CERP
Protein Name	ATP-binding cassette sub-family A member 1 (ATP-binding cassette transporter 1) (ABC-1) (ATP-binding cassette 1) (Cholesterol efflux regulatory protein)
Human Gene Id	19
Swiss-Prot	O95477
Formulation	Liquid in PBS containing 50% glycerol, and 002% sodium azide
Source	Rabbit
Purification	The antibody was affinity-purified from rabbit antiserum by affinity-chromatography using epitope-specific immunogen
Concentration	1 mg/ml
Storage&Stability	-20°C/1 year
Subcellular Location	Cell membrane; Multi-pass membrane protein Endosome
MW	-
Background	The membrane-associated protein encoded by this gene is a member of the superfamily of ATP-binding cassette (ABC) transporters. ABC proteins transport various molecules across extra- and intracellular membranes. ABC genes are divided into seven distinct subfamilies (ABC1, MDR/TAP, MRP, ALD, OABP, GCN20, White). This protein is a member of the ABC1 subfamily. Members of the ABC1 subfamily comprise the only major ABC subfamily found exclusively in multicellular eukaryotes. With cholesterol as its substrate, this protein functions as a cholesterol efflux pump in the cellular lipid removal pathway. Mutations in this gene have been associated with Tangier's disease and familial high-density lipoprotein deficiency.

Products Images:



Chen, Kuikui, et al. "Investigation of the lipid-lowering mechanisms and active ingredients of Danhe granule on hyperlipidemia based on systems pharmacology." *Frontiers in pharmacology* 11 (2020): 528.



Chen, Lili, et al. "Activation of liver X receptor promotes hippocampal neurogenesis and improves long-term cognitive function recovery in acute cerebral ischemia-reperfusion mice." *Journal of neurochemistry* 154.2 (2020): 205-217.