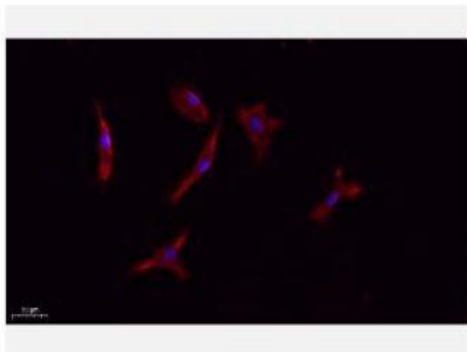


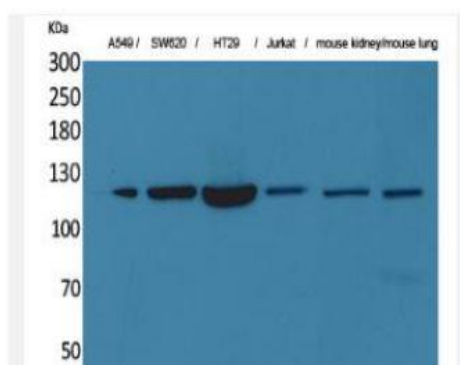
CD133 Polyclonal Antibody

Catalog No.	IPB0129
Reactivity	Human; Mouse;
Applications	WB; IHC-p; IF/ICC; ELISA
Dilution	WB: 1:500-1:2000 IHC-p: 1:100-1:200 ELISA: 1:20000 IF: 1:50-1:200
Gene Name	PROM1
Protein Name	Prominin-1
Human Gene Id	8842
Swiss-Prot	O43490
Formulation	Liquid in PBS containing 50% glycerol, 05% BSA and 002% sodium azide
Source	Rabbit
Purification	The antibody was affinity-purified from rabbit antiserum by affinity-chromatography using epitope-specific immunogen
Concentration	1 mg/ml
Storage&Stability	-20°C/1 year
Subcellular Location	Apical cell membrane; Multi-pass membrane protein Cell projection, microvillus membrane; Multi-pass membrane protein Cell projection, cilium, photoreceptor outer segment Endoplasmic reticulum Endoplasmic reticulum-Golgi intermediate compartment Found in extracellular membrane particles in various body fluids such as cerebrospinal fluid, saliva, seminal fluid and urine
MW	97202
Background	This gene encodes a pentaspan transmembrane glycoprotein The protein localizes to membrane protrusions and is often expressed on adult stem cells, where it is thought to function in maintaining stem cell properties by suppressing differentiation Mutations in this gene have been shown to result in retinitis pigmentosa and Stargardt disease Expression of this gene is also associated with several types of cancer This gene is expressed from at least five alternative promoters that are expressed in a tissue-dependent manner Multiple transcript variants encoding different isoforms have been found for this gene

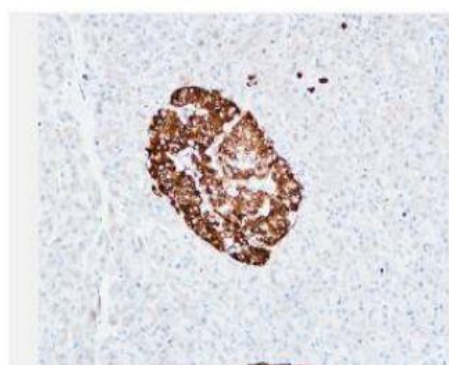
Products Images:



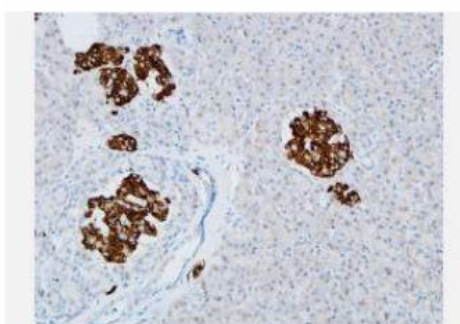
Immunofluorescence analysis of A549. 1,primary Antibody(red) was diluted at 1:200(4°C overnight). 2, Goat Anti Rabbit IgG (H&L) - Alexa Fluor 594 Secondary antibody was diluted at 1:1000(room temperature, 50min).3, Picture B: DAPI(blue) 10min.



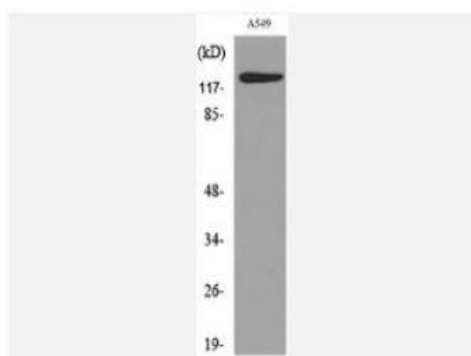
Western Blot analysis of A549, SW620, HT29, Jurkat, mouse kidney, mouse lung cells using CD133 Polyclonal Antibody. Secondary antibody(catalog#:RS0002) was diluted at 1:20000



Immunohistochemical analysis of paraffin-embedded Human pancreas. 1, Antibody was diluted at 1:200(4° overnight). 2, High-pressure and temperature EDTA, pH8.0 was used for antigen retrieval. 3,Secondary antibody was diluted at 1:200(room temperature, 30min).



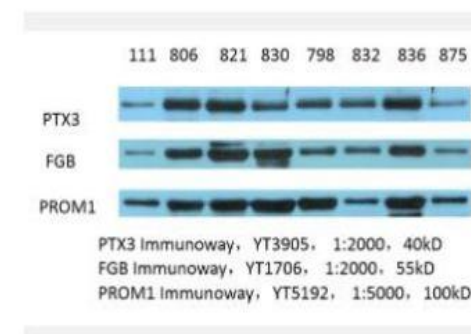
Immunohistochemical analysis of paraffin-embedded Human pancreas. 1, Antibody was diluted at 1:200(4° overnight). 2, High-pressure and temperature EDTA, pH8.0 was used for antigen retrieval. 3,Secondary antibody was diluted at 1:200(room temperature, 30min).



Western blot analysis of lysate from A549 cells, using PROM1 Antibody.



The picture was kindly provided by our customer



Western Blot analysis of various cells. The picture was provided by our customer.