

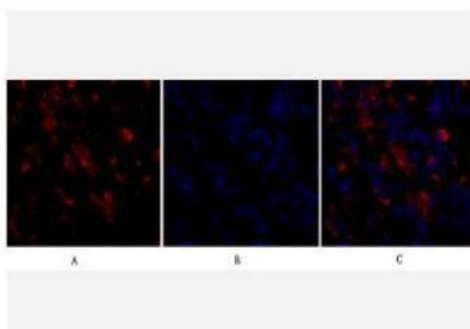
## CD284 Polyclonal Antibody

|                              |   |
|------------------------------|---|
| <b>Catalog No.</b>           | IPB0125   |
| <b>Reactivity</b>            | Human; Mouse;   |
| <b>Applications</b>          | IF/ICC; WB; IHC-p; ELISA  |
| <b>Dilution</b>              | IF: 1:50-200    WB: 1:500-1:2000    IHC: 1:50-1:200    ELISA: 1:40000   |
| <b>Gene Name</b>             | TLR4  |
| <b>Protein Name</b>          | Toll-like receptor 4  |
| <b>Human Gene Id</b>         | 7099  |
| <b>Swiss-Prot</b>            | O00206  |
| <b>Formulation</b>           | Liquid in PBS containing 50% glycerol, 05% BSA and 002% sodium azide  |
| <b>Source</b>                | Rabbit  |
| <b>Purification</b>          | The antibody was affinity-purified from rabbit antiserum by affinity-chromatography using epitope-specific immunogen  |
| <b>Concentration</b>         | 1 mg/ml   |
| <b>Storage&amp;Stability</b> | -20°C/1 year  |
| <b>Subcellular Location</b>  | Cell membrane; Single-pass type I membrane protein Early endosome Cell projection, ruffle Upon complex formation with CD36 and TLR6, internalized through dynamin-dependent endocytosis (PubMed:20037584) Colocalizes with RFTN1 at cell membrane and then together with RFTN1 moves to endosomes, upon lipopolysaccharide stimulation  |
| <b>MW</b>                    | 95680   |
| <b>Background</b>            | The protein encoded by this gene is a member of the Toll-like receptor (TLR) family which plays a fundamental role in pathogen recognition and activation of innate immunity TLRs are highly conserved from Drosophila to humans and share structural and functional similarities They recognize pathogen-associated molecular patterns that are expressed on infectious agents, and mediate the production of cytokines necessary for the development of effective immunity The various TLRs exhibit different patterns of expression This receptor has been implicated in signal transduction events induced by lipopolysaccharide (LPS) found in most gram-negative bacteria Mutations in this gene have been associated with differences in LPS responsiveness Multiple transcript variants encoding different isoforms have been found for this gene |

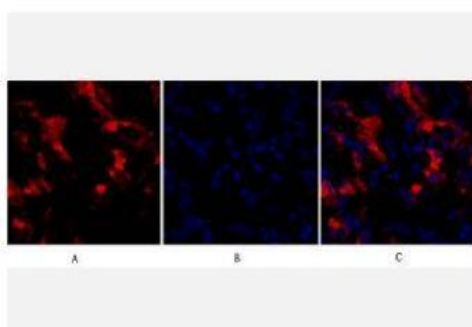
### Products Images:



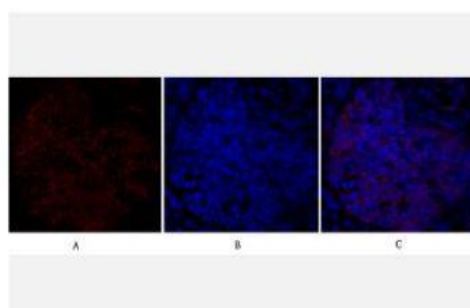
Immunofluorescence analysis of A549. 1,primary Antibody(red) was diluted at 1:200(4°C overnight). 2, Goat Anti Rabbit IgG (H&L) - Alexa Fluor 594 Secondary antibody was diluted at 1:1000(room temperature, 50min).3, Picture B: DAPI(blue) 10min.



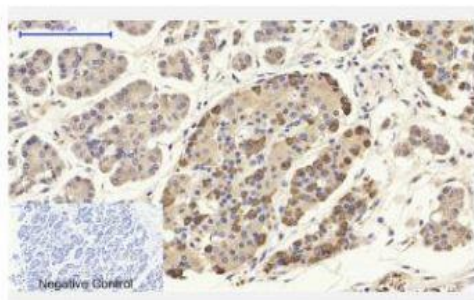
Immunofluorescence analysis of human-stomach tissue. 1,CD284 Polyclonal Antibody(red) was diluted at 1:200(4°C,overnight). 2, Cy3 labeled Secondary antibody was diluted at 1:300(room temperature, 50min).3, Picture B: DAPI(blue) 10min. Picture A:Target. Picture B: DAPI. Picture C: merge of A+B



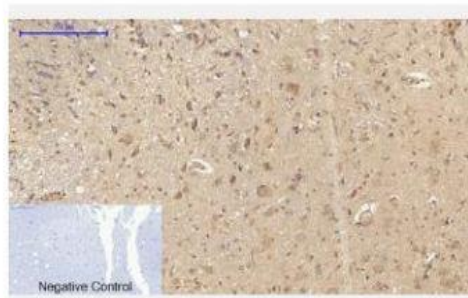
Immunofluorescence analysis of human-stomach tissue. 1,CD284 Polyclonal Antibody(red) was diluted at 1:200(4°C,overnight). 2, Cy3 labeled Secondary antibody was diluted at 1:300(room temperature, 50min).3, Picture B: DAPI(blue) 10min. Picture A:Target. Picture B: DAPI. Picture C: merge of A+B



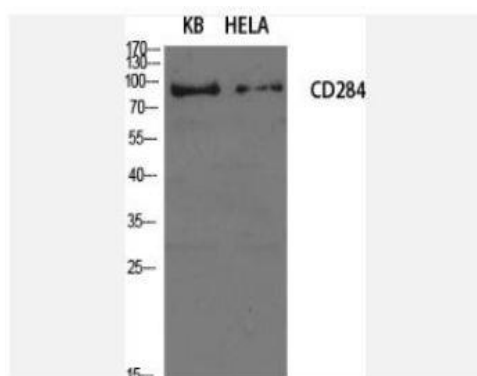
Immunofluorescence analysis of mouse-spleen tissue. 1,CD284 Polyclonal Antibody(red) was diluted at 1:200(4°C,overnight). 2, Cy3 labeled Secondary antibody was diluted at 1:300(room temperature, 50min).3, Picture B: DAPI(blue) 10min. Picture A:Target. Picture B: DAPI. Picture C: merge of A+B



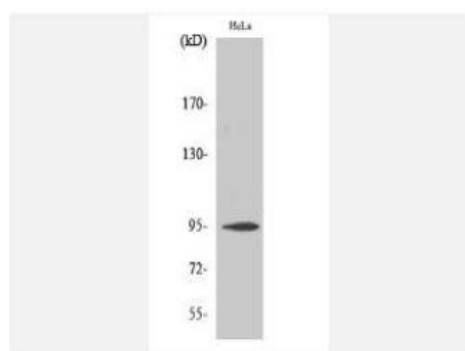
Immunohistochemical analysis of paraffin-embedded Human-stomach-cancer tissue. 1,CD284 Polyclonal Antibody was diluted at 1:200(4°C,overnight). 2, Sodium citrate pH 6.0 was used for antibody retrieval(>98°C,20min). 3,Secondary antibody was diluted at 1:200(room temperature, 30min). Negative control was used by secondary antibody only.



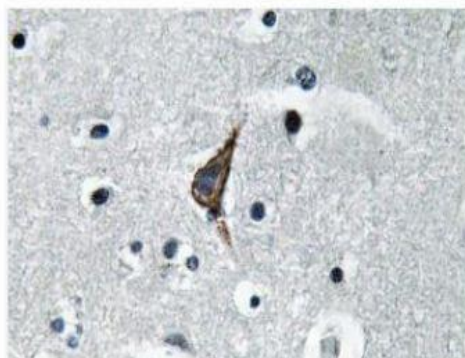
Immunohistochemical analysis of paraffin-embedded Rat-spinal-cord tissue. 1,CD284 Polyclonal Antibody was diluted at 1:200(4°C,overnight). 2, Sodium citrate pH 6.0 was used for antibody retrieval(>98°C,20min). 3,Secondary antibody was diluted at 1:200(room temperature, 30min). Negative control was used by secondary antibody only.



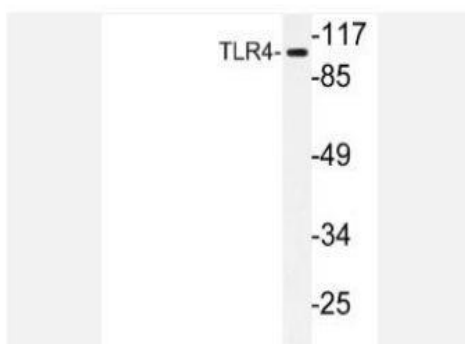
Western Blot analysis of various cells using CD284 Polyclonal Antibody diluted at 1:1000



Western Blot analysis of COLO205 cells using CD284 Polyclonal Antibody diluted at 1:1000



Immunohistochemistry analysis of TLR4 antibody in paraffin-embedded human brain tissue.



Western blot analysis of lysate from HeLa cells, using TLR4 antibody.