

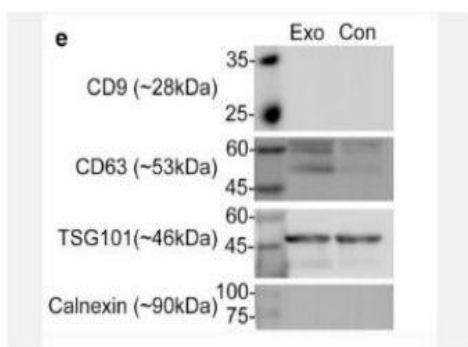
CD63 Polyclonal Antibody

Catalog No.	IPB0123
Reactivity	Human; Mouse; Rat
Applications	IF/ICC; WB; IHC-p; ELISA
Dilution	IF: 1:50-200 WB: 1:500-1:2000 IHC-p: 1:100-1:200 ELISA: 1:20000
Gene Name	CD63
Protein Name	CD63 antigen
Human Gene Id	967
Swiss-Prot	P08962
Formulation	Liquid in PBS containing 50% glycerol, 05% BSA and 002% sodium azide
Source	Rabbit
Purification	The antibody was affinity-purified from rabbit antiserum by affinity-chromatography using epitope-specific immunogen
Concentration	1 mg/ml
Storage&Stability	-20°C/1 year
Subcellular Location	Cell membrane; Multi-pass membrane protein Lysosome membrane; Multi-pass membrane protein Late endosome membrane; Multi-pass membrane protein Endosome, multivesicular body Melanosome Secreted, extracellular exosome Cell surface Also found in Weibel-Palade bodies of endothelial cells (PubMed:10793155) Located in platelet dense granules (PubMed:7682577) Detected in a subset of pre-melanosomes Detected on intraluminal vesicles (ILVs) within multivesicular bodies (PubMed:21962903)
MW	25637
Background	The protein encoded by this gene is a member of the transmembrane 4 superfamily, also known as the tetraspanin family Most of these members are cell-surface proteins that are characterized by the presence of four hydrophobic domains The proteins mediate signal transduction events that play a role in the regulation of cell development, activation, growth and motility The encoded protein is a cell surface glycoprotein that is known to complex with integrins It may function as a blood platelet activation marker Deficiency of this protein is associated with Hermansky-Pudlak syndrome Also this gene has been associated with tumor progression Alternative splicing results in multiple transcript variants encoding different protein isoforms

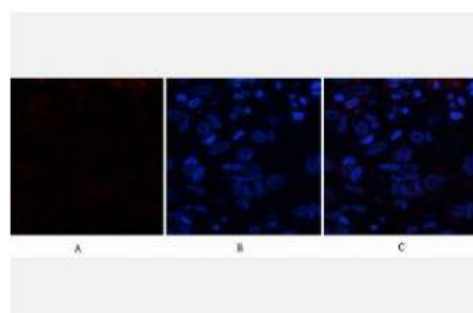
Products Images:



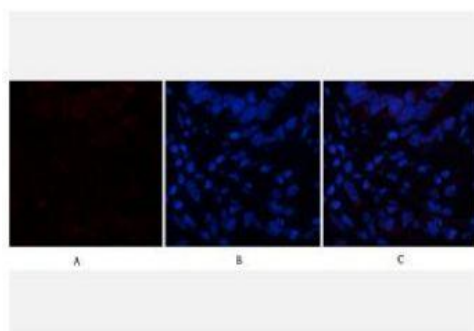
Immunofluorescence analysis of A549. 1,primary Antibody(red) was diluted at 1:200(4°C overnight). 2, Goat Anti Rabbit IgG (H&L) - Alexa Fluor 594 Secondary antibody was diluted at 1:1000(room temperature, 50min).3, Picture B: DAPI(blue) 10min.



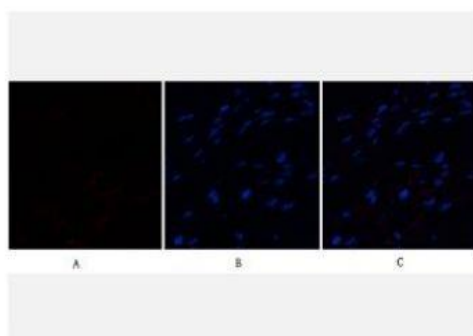
Zhang, Z., Xu, R., Yang, Y. et al. Micro/nano-textured hierarchical titanium topography promotes exosome biogenesis and secretion to improve osseointegration. J Nanobiotechnol 19, 78 (2021).



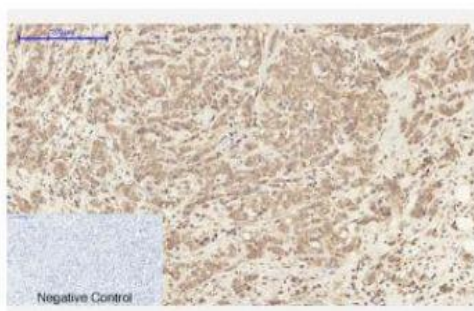
Immunofluorescence analysis of human-breast-cancer tissue. 1,CD63 Polyclonal Antibody(red) was diluted at 1:200(4°C,overnight). 2, Cy3 labeled Secondary antibody was diluted at 1:300(room temperature, 50min).3, Picture B: DAPI(blue) 10min. Picture A:Target. Picture B: DAPI. Picture C: merge of A+B



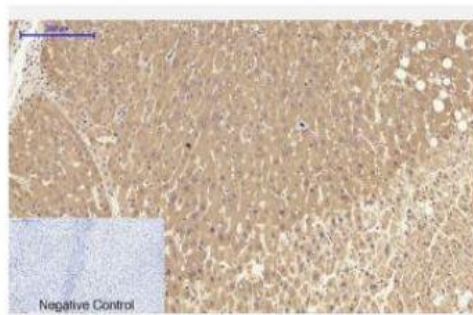
Immunofluorescence analysis of human-stomach-cancer tissue. 1,CD63 Polyclonal Antibody(red) was diluted at 1:200(4°C,overnight). 2, Cy3 labeled Secondary antibody was diluted at 1:300(room temperature, 50min).3, Picture B: DAPI(blue) 10min. Picture A:Target. Picture B: DAPI. Picture C: merge of A+B



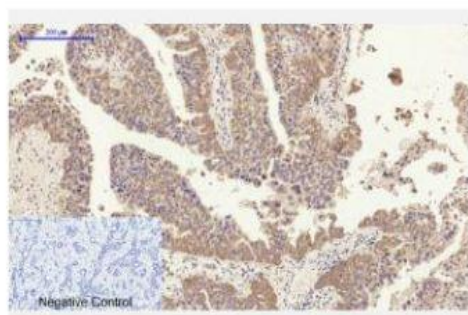
Immunofluorescence analysis of human-stomach-cancer tissue. 1,CD63 Polyclonal Antibody(red) was diluted at 1:200(4°C,overnight). 2, Cy3 labeled Secondary antibody was diluted at 1:300(room temperature, 50min).3, Picture B: DAPI(blue) 10min. Picture A:Target. Picture B: DAPI. Picture C: merge of A+B



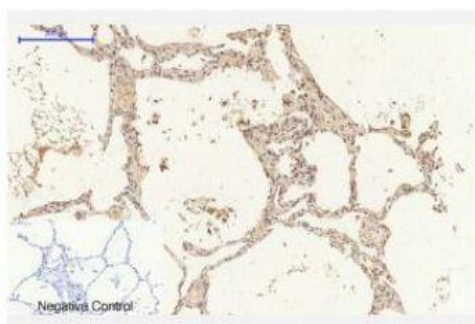
Immunohistochemical analysis of paraffin-embedded Human-breast-cancer tissue. 1,CD63 Polyclonal Antibody was diluted at 1:200(4°C,overnight). 2, Sodium citrate pH 6.0 was used for antibody retrieval(>98°C,20min). 3,Secondary antibody was diluted at 1:200(room temperature, 30min). Negative control was used by secondary antibody only.



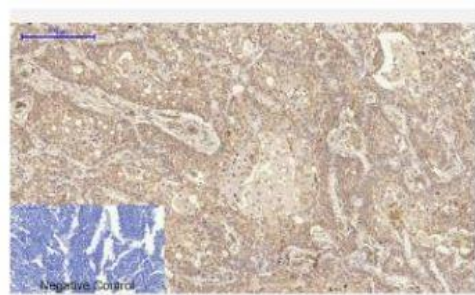
Immunohistochemical analysis of paraffin-embedded Human-liver tissue. 1,CD63 Polyclonal Antibody was diluted at 1:200(4°C,overnight). 2, Sodium citrate pH 6.0 was used for antibody retrieval(>98°C,20min). 3,Secondary antibody was diluted at 1:200(room temperature, 30min). Negative control was used by secondary antibody only.



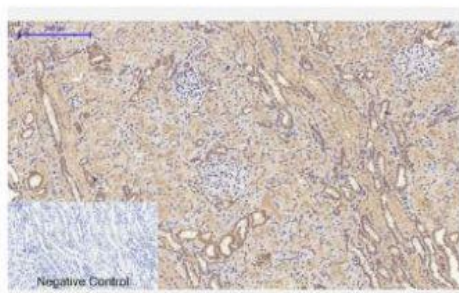
Immunohistochemical analysis of paraffin-embedded Human-liver-cancer tissue. 1,CD63 Polyclonal Antibody was diluted at 1:200(4°C,overnight). 2, Sodium citrate pH 6.0 was used for antibody retrieval(>98°C,20min). 3,Secondary antibody was diluted at 1:200(room temperature, 30min). Negative control was used by secondary antibody only.



Immunohistochemical analysis of paraffin-embedded Human-lung tissue. 1,CD63 Polyclonal Antibody was diluted at 1:200(4°C,overnight). 2, Sodium citrate pH 6.0 was used for antibody retrieval(>98°C,20min). 3,Secondary antibody was diluted at 1:200(room tempeRature, 30min). Negative control was used by secondary antibody only.



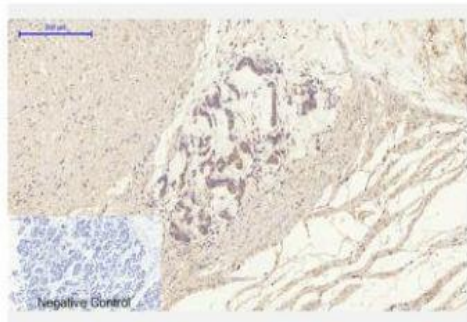
Immunohistochemical analysis of paraffin-embedded Human-lung-cancer tissue. 1,CD63 Polyclonal Antibody was diluted at 1:200(4°C,overnight). 2, Sodium citrate pH 6.0 was used for antibody retrieval(>98°C,20min). 3,Secondary antibody was diluted at 1:200(room tempeRature, 30min). Negative control was used by secondary antibody only.



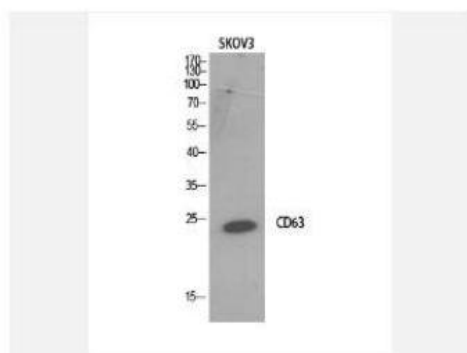
Immunohistochemical analysis of paraffin-embedded Human-kidney tissue. 1,CD63 Polyclonal Antibody was diluted at 1:200(4°C,overnight). 2, Sodium citrate pH 6.0 was used for antibody retrieval(>98°C,20min). 3,Secondary antibody was diluted at 1:200(room tempeRature, 30min). Negative control was used by secondary antibody only.



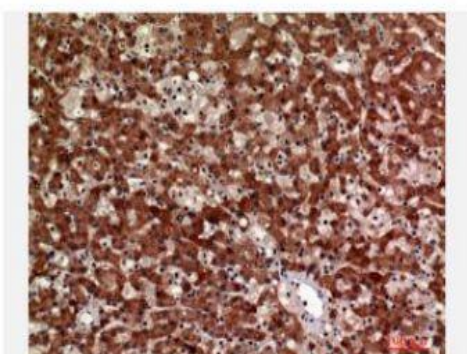
Immunohistochemical analysis of paraffin-embedded Human-kidney-cancer tissue. 1,CD63 Polyclonal Antibody was diluted at 1:200(4°C,overnight). 2, Sodium citrate pH 6.0 was used for antibody retrieval(>98°C,20min). 3,Secondary antibody was diluted at 1:200(room tempeRature, 30min). Negative control was used by secondary antibody only.



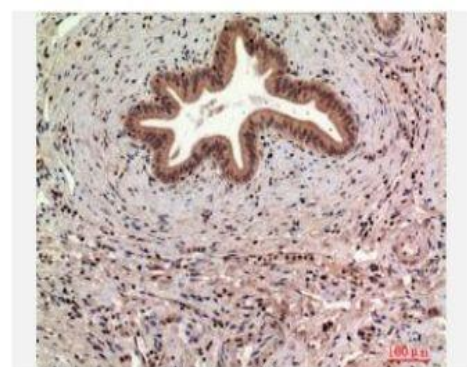
Immunohistochemical analysis of paraffin-embedded Human-stomach-cancer tissue. 1,CD63 Polyclonal Antibody was diluted at 1:200(4°C,overnight). 2, Sodium citrate pH 6.0 was used for antibody retrieval(>98°C,20min). 3,Secondary antibody was diluted at 1:200(room temperature, 30min). Negative control was used by secondary antibody only.



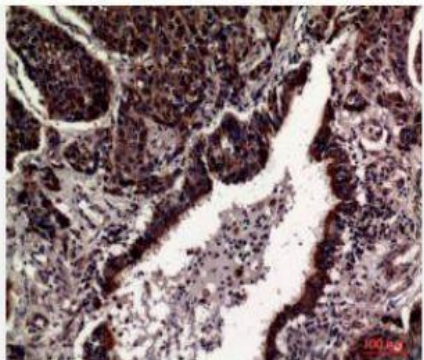
Western Blot analysis of SKOV3 cells using CD63 Polyclonal Antibody. Secondary antibody(catalog#:RS0002) was diluted at 1:20000



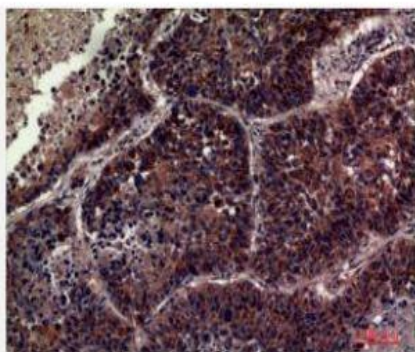
Immunohistochemical analysis of paraffin-embedded human-liver, antibody was diluted at 1:100



Immunohistochemical analysis of paraffin-embedded human-liver, antibody was diluted at 1:100



Immunohistochemical analysis of paraffin-embedded human-lung, antibody was diluted at 1:100



Immunohistochemical analysis of paraffin-embedded human-lung, antibody was diluted at 1:100