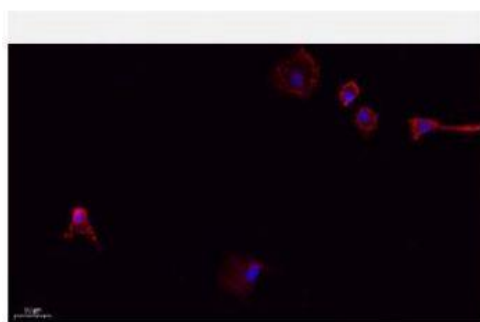


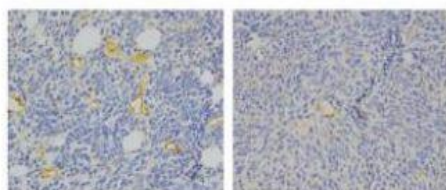
CD31 Polyclonal Antibody

Catalog No.	IPB0122
Reactivity	Human; Mouse;
Applications	WB; IHC-p; IF/ICC; ELISA
Dilution	WB: 1:500-1:2000 IHC-p: 1:100-1:200 ELISA: 1:20000 IF: 1:50-1:200
Gene Name	PECAM1
Protein Name	Platelet endothelial cell adhesion molecule
Human Gene Id	5175
Swiss-Prot	P16284
Formulation	Liquid in PBS containing 50% glycerol, 05% BSA and 002% sodium azide
Source	Rabbit
Purification	The antibody was affinity-purified from rabbit antiserum by affinity-chromatography using epitope-specific immunogen
Concentration	1 mg/ml
Storage&Stability	-20°C/1 year
Subcellular Location	Cell membrane; Single-pass type I membrane protein Cell surface expression on neutrophils is down-regulated upon fMLP or CXCL8:IL8-mediated stimulation [Isoform Long]: Cell membrane; Single-pass type I membrane protein Membrane raft Cell junction Localizes to the lateral border recycling compartment (LBRC) and recycles from the LBRC to the junction in resting endothelial cells [Isoform Delta15]: Cell junction Localizes to the lateral border recycling compartment (LBRC) and recycles from the LBRC to the junction in resting endothelial cells
MW	82536
Background	The protein encoded by this gene is found on the surface of platelets, monocytes, neutrophils, and some types of T-cells, and makes up a large portion of endothelial cell intercellular junctions The encoded protein is a member of the immunoglobulin superfamily and is likely involved in leukocyte migration, angiogenesis, and integrin activation

Products Images:



Immunofluorescence analysis of A549. 1,primary Antibody(red) was diluted at 1:200(4°C overnight). 2, Goat Anti Rabbit IgG (H&L) - Alexa Fluor 594 Secondary antibody was diluted at 1:1000(room temperature, 50min).3, Picture B: DAPI(blue) 10min.

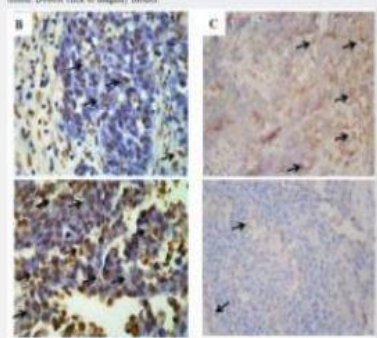


Control group

Huaier group

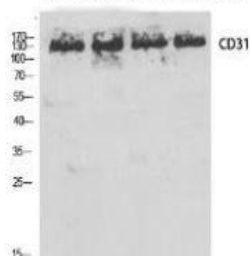
Li, Yaming, et al. "Huaier extract suppresses breast cancer via regulating tumor-associated macrophages." *Scientific reports* 6 (2016): 20049.

hematoxylin-eosin (H&E) staining



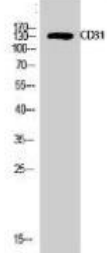
Wang, Lijuan, et al. "Establishment and evaluation of the VX2 orthotopic lung cancer rabbit model: a ultra-minimal invasive percutaneous puncture inoculation method." *The Korean Journal of Physiology & Pharmacology* 22.3 (2018): 291-300.

HEPG2 K562 L929 MOUSE-BRAIN

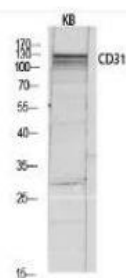


Western Blot analysis of various cells using CD31 Polyclonal Antibody diluted at 1:1000

Mouse-muscle



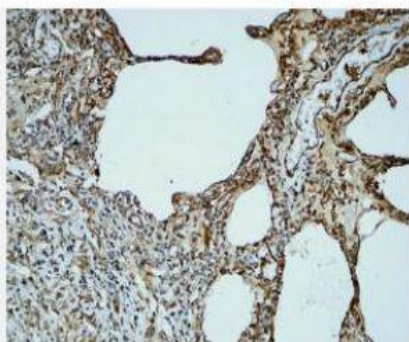
Western Blot analysis of rat-muscle cells using CD31 Polyclonal Antibody diluted at 1:1000



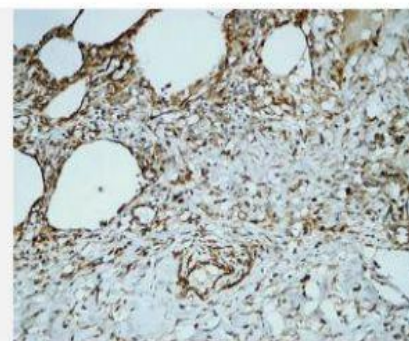
Western blot analysis of KB lysis using CD31 antibody.
Antibody was diluted at 1:1000



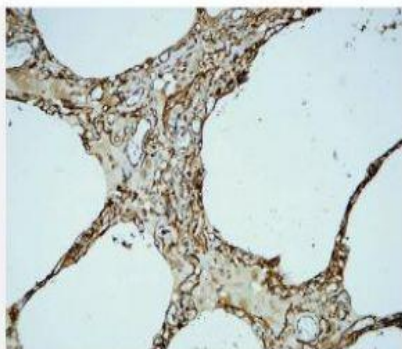
Western blot analysis of 293T lysis using CD31 antibody.
Antibody was diluted at 1:1000



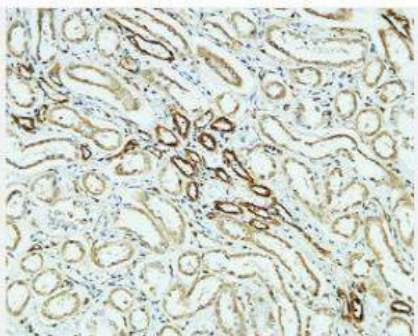
Immunohistochemical analysis of paraffin-embedded Human lung. 1, Antibody was diluted at 1:400(4° overnight). 2, High-pressure and temperature EDTA, pH8.0 was used for antigen retrieval. 3, Secondary antibody was diluted at 1:200(room temperature, 30min).



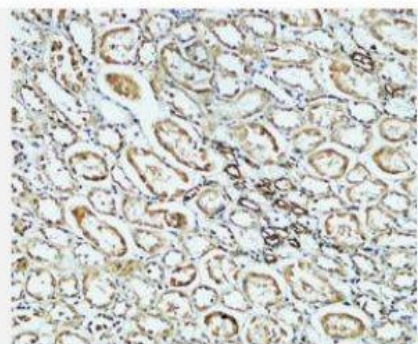
Immunohistochemical analysis of paraffin-embedded Human lung. 1, Antibody was diluted at 1:400(4° overnight). 2, High-pressure and temperature EDTA, pH8.0 was used for antigen retrieval. 3, Secondary antibody was diluted at 1:200(room temperature, 30min).



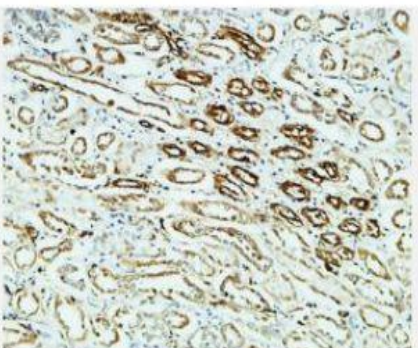
Immunohistochemical analysis of paraffin-embedded Human lung. 1, Antibody was diluted at 1:400(4° overnight). 2, High-pressure and temperature EDTA, pH8.0 was used for antigen retrieval. 3, Secondary antibody was diluted at 1:200(room temperature, 30min).



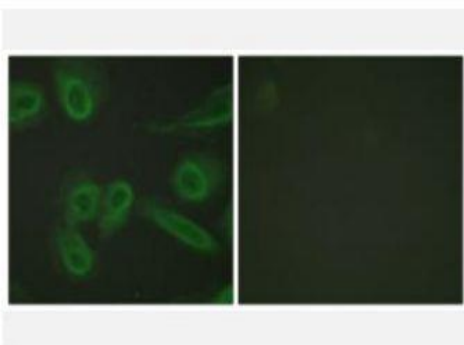
Immunohistochemical analysis of paraffin-embedded Human kidney. 1, Antibody was diluted at 1:400(4° overnight). 2, High-pressure and temperature EDTA, pH8.0 was used for antigen retrieval. 3, Secondary antibody was diluted at 1:200(room temperature, 30min).



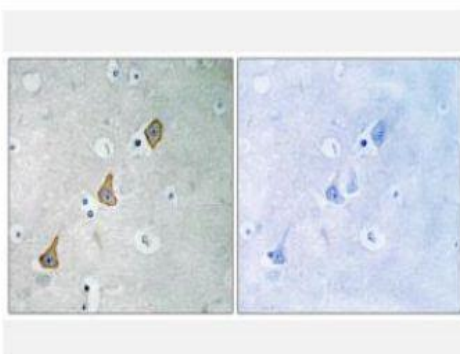
Immunohistochemical analysis of paraffin-embedded Human kidney. 1, Antibody was diluted at 1:400(4° overnight). 2, High-pressure and temperature EDTA, pH8.0 was used for antigen retrieval. 3, Secondary antibody was diluted at 1:200(room temperature, 30min).



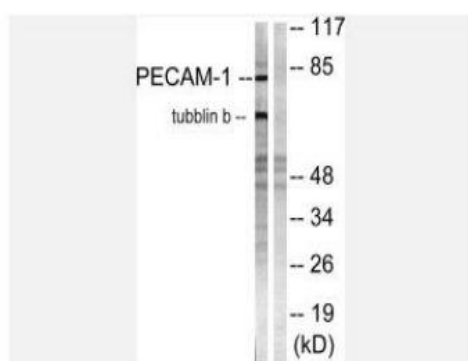
Immunohistochemical analysis of paraffin-embedded Human kidney. 1, Antibody was diluted at 1:400(4° overnight). 2, High-pressure and temperature EDTA, pH8.0 was used for antigen retrieval. 3, Secondary antibody was diluted at 1:200(room temperature, 30min).



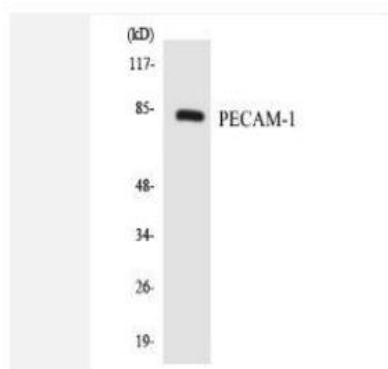
Immunofluorescence analysis of HeLa cells, using PECAM-1 Antibody. The picture on the right is blocked with the synthesized peptide.



Immunohistochemistry analysis of paraffin-embedded human brain tissue, using PECAM-1 Antibody. The picture on the right is blocked with the synthesized peptide.



Western blot analysis of lysates from Jurkat cells, using PECAM-1 Antibody. The lane on the right is blocked with the synthesized peptide.



Western blot analysis of the lysates from HT-29 cells using PECAM-1 antibody.