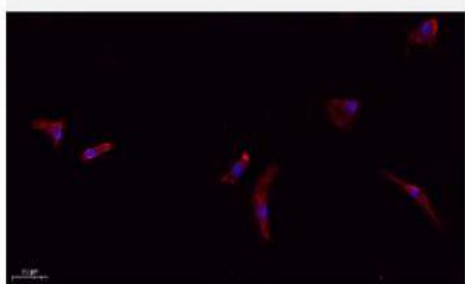


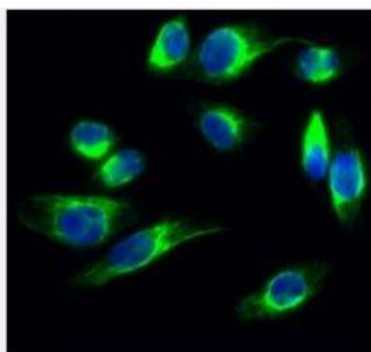
Claudin-1 Polyclonal Antibody

Catalog No.	IPB0121
Reactivity	Human; Mouse; Rat
Applications	WB; IHC-p; IF/ICC; ELISA
Dilution	WB: 1:500-1:2000 IHC-p: 1:100-1:200 ELISA: 1:20000 IF: 1:50-1:200
Gene Name	CLDN1
Protein Name	Claudin-1
Human Gene Id	9076
Swiss-Prot	O95832
Formulation	Liquid in PBS containing 50% glycerol, 05% BSA and 002% sodium azide
Source	Rabbit
Purification	The antibody was affinity-purified from rabbit antiserum by affinity-chromatography using epitope-specific immunogen
Concentration	1 mg/ml
Storage&Stability	-20°C/1 year
Subcellular Location	Cell junction, tight junction Cell membrane; Multi-pass membrane protein Basolateral cell membrane Associates with CD81 and the CLDN1-CD81 complex localizes to the basolateral cell membrane
MW	22744
Background	Tight junctions represent one mode of cell-to-cell adhesion in epithelial or endothelial cell sheets, forming continuous seals around cells and serving as a physical barrier to prevent solutes and water from passing freely through the paracellular space These junctions are comprised of sets of continuous networking strands in the outwardly facing cytoplasmic leaflet, with complementary grooves in the inwardly facing extracytoplasmic leaflet The protein encoded by this gene, a member of the claudin family, is an integral membrane protein and a component of tight junction strands Loss of function mutations result in neonatal ichthyosis-sclerosing cholangitis syndrome

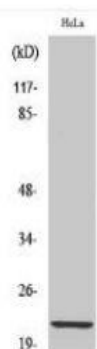
Products Images:



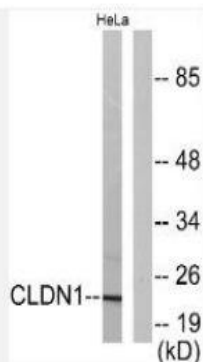
Immunofluorescence analysis of A549. 1,primary Antibody(red) was diluted at 1:200(4°C overnight). 2, Goat Anti Rabbit IgG (H&L) - Alexa Fluor 594 Secondary antibody was diluted at 1:1000(room temperature, 50min).3, Picture B: DAPI(blue) 10min.



Immunofluorescence analysis of HeLa cell. 1, Claudin-1 Polyclonal Antibody (green) was diluted at 1:200 (4° overnight). 2, Goat Anti Rabbit Alexa Fluor 488 Catalog: RS3211 was diluted at 1:1000 (room temperature, 50min). 3 DAPI (blue) 10min.



Western Blot analysis of various cells using Claudin-1 Polyclonal Antibody diluted at 1:1000



Western blot analysis of lysates from HeLa cells, using Claudin 1 Antibody. The lane on the right is blocked with the synthesized peptide.