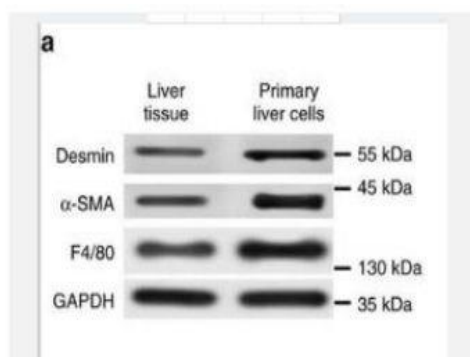


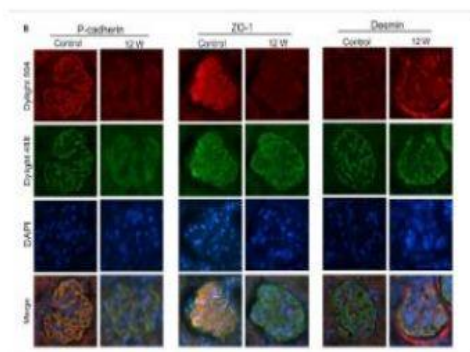
Desmin Polyclonal Antibody

Catalog No.	IPB0113
Reactivity	Human; Mouse; Rat
Applications	WB; IHC-p; IF/ICC; ELISA
Dilution	WB: 1:500-1:2000 IHC: 1:50-1:200 IF: 1:50-1:200 ELISA: 1:10000
Gene Name	DES
Protein Name	Desmin
Human Gene Id	1674
Swiss-Prot	P17661
Formulation	Liquid in PBS containing 50% glycerol, 05% BSA and 002% sodium azide
Source	Rabbit
Purification	The antibody was affinity-purified from rabbit antiserum by affinity-chromatography using epitope-specific immunogen
Concentration	1 mg/ml
Storage&Stability	-20°C/1 year
Subcellular Location	Cytoplasm, myofibril, sarcomere, Z line Cytoplasm Cell membrane, sarcolemma Nucleus Localizes in the intercalated disks which occur at the Z line of cardiomyocytes (PubMed:24200904, PubMed:26724190) Localizes in the nucleus exclusively in differentiating cardiac progenitor cells and premature cardiomyocytes (By similarity)
MW	53536
Background	This gene encodes a muscle-specific class III intermediate filament Homopolymers of this protein form a stable intracytoplasmic filamentous network connecting myofibrils to each other and to the plasma membrane Mutations in this gene are associated with desmin-related myopathy, a familial cardiac and skeletal myopathy (CSM), and with distal myopathies

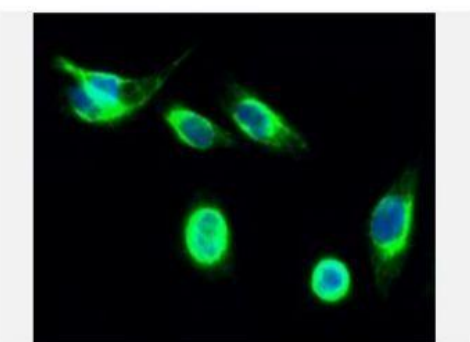
Products Images:



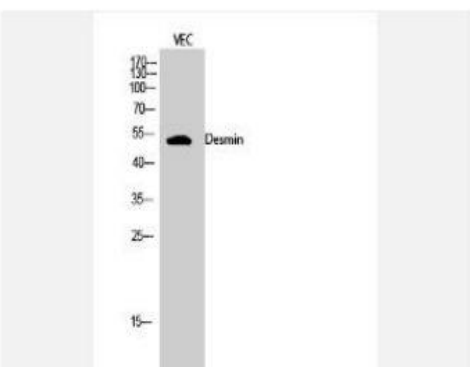
Zhang, Haiyang, et al. "Exosome-delivered EGFR regulates liver microenvironment to promote gastric cancer liver metastasis." *Nature communications* 8 (2017): 15016.



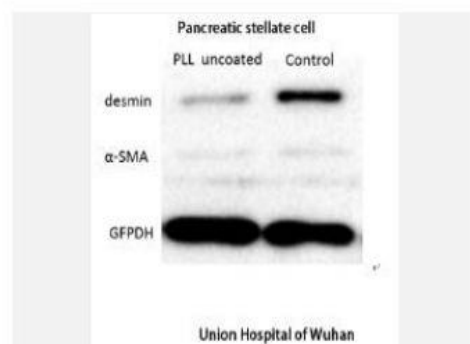
Hu, Mengsi, et al. "Lnc RNA MALAT 1 is dysregulated in diabetic nephropathy and involved in high glucose-induced podocyte injury via its interplay with β -catenin." *Journal of cellular and molecular medicine* 21.11 (2017): 2732-2747.



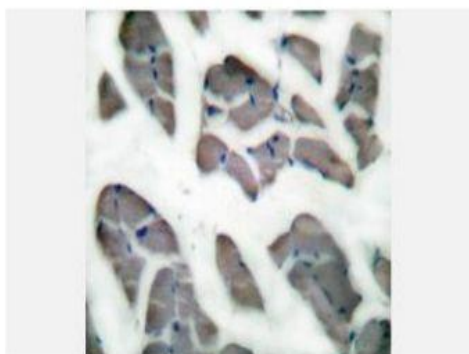
Immunofluorescence analysis of Hela cell. 1, Desmin Polyclonal Antibody (green) was diluted at 1:200 (4° overnight). 2, Goat Anti Rabbit Alexa Fluor 488 Catalog: RS3211 was diluted at 1:1000 (room temperature, 50 min). 3 DAPI (blue) 10 min.



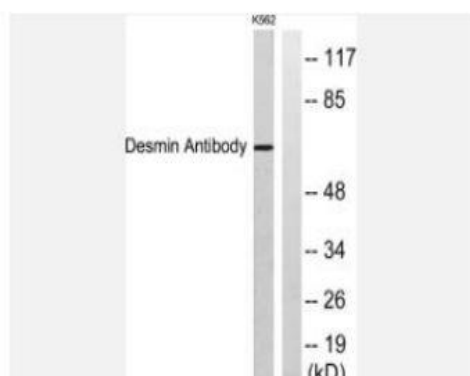
Western Blot analysis of VEC cells using Desmin Polyclonal Antibody diluted at 1:2000



The picture was kindly provided by our customer



Immunohistochemistry analysis of paraffin-embedded human skeletal muscle tissue, using Desmin Antibody. The picture on the right is blocked with the synthesized peptide.



Western blot analysis of lysates from K562 cells, using Desmin Antibody. The lane on the right is blocked with the synthesized peptide.