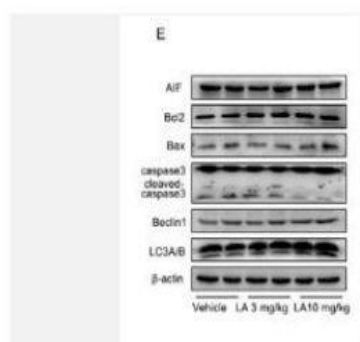


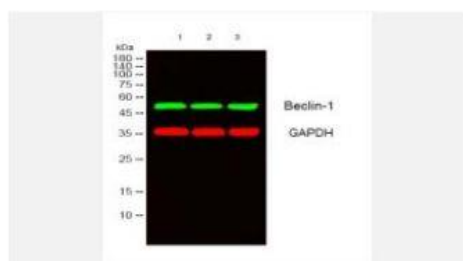
Beclin-1 Polyclonal Antibody

Catalog No.	IPB0106
Reactivity	Human; Mouse;
Applications	WB; ELISA
Dilution	WB: 1:500-2000 ELISA: 1:10000-20000
Gene Name	BECN1 GT197
Protein Name	Beclin-1
Human Gene Id	8678
Swiss-Prot	Q14457
Formulation	Liquid in PBS containing 50% glycerol, 05% BSA and 002% sodium azide
Source	Rabbit
Purification	The antibody was affinity-purified from rabbit antiserum by affinity-chromatography using epitope-specific immunogen
Concentration	1 mg/ml
Storage&Stability	-20°C/1 year
Subcellular Location	Cytoplasm Golgi apparatus, trans-Golgi network membrane; Peripheral membrane protein Endosome membrane; Peripheral membrane protein Endoplasmic reticulum membrane; Peripheral membrane protein Mitochondrion membrane; Peripheral membrane protein Endosome Cytoplasmic vesicle, autophagosome Interaction with ATG14 promotes translocation to autophagosomes Expressed in dendrites and cell bodies of cerebellar Purkinje cells (By similarity) [Beclin-1-C 35 kDa]: Mitochondrion Nucleus Cytoplasm [Beclin-1-C 37 kDa]: Mitochondrion
MW	51896
Background	This gene encodes a protein that regulates autophagy, a catabolic process of degradation induced by starvation The encoded protein is a component of the phosphatidylinositol-3-kinase (PI3K) complex which mediates vesicle-trafficking processes This protein is thought to play a role in multiple cellular processes, including tumorigenesis, neurodegeneration and apoptosis Alternative splicing results in multiple transcript variants

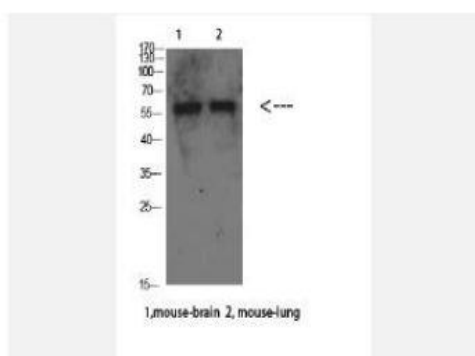
Products Images:



Zhang, Yan-Hui, et al. "α-Lipoic acid improves abnormal behavior by mitigation of oxidative stress, inflammation, ferroptosis, and tauopathy in P301S Tau transgenic mice." *Redox biology* 14 (2018): 535-548.



Western blot analysis of lysates from 1) mouse-brain , 2) mouse-lung, 3) HeLa cells, (Green) primary antibody was diluted at 1:1000, 4° over night, secondary antibody(cat:RS23920)was diluted at 1:10000, 37° 1 hour. (Red) GAPDH Monoclonal Antibody(2B8) (cat:YM3029) antibody was diluted at 1:5000 as loading control, 4° over night,secondary antibody(cat:RS23710)was diluted at 1:10000, 37° 1 hour.



Western Blot analysis of mouse-brain mouse-lung cells using Beclin-1 Polyclonal Antibody diluted at 1:500. Secondary antibody(catalog#:RS0002) was diluted at 1:20000