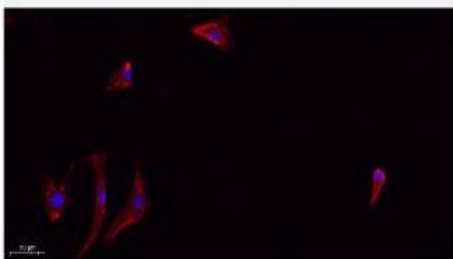


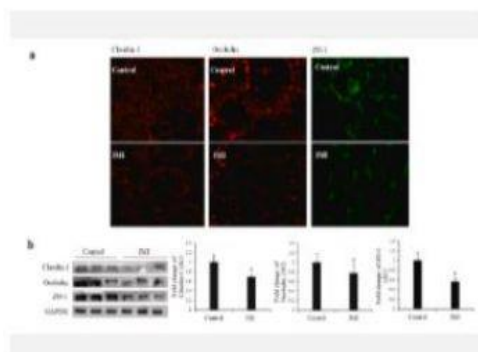
ZO1 Polyclonal Antibody

Catalog No.	IPB0105
Reactivity	Human; Mouse;
Applications	WB; IF; ELISA
Dilution	WB: 1:500-2000 IF: 1:50-1:200 ELISA: 1:5000 -20000
Gene Name	TJP1 ZO1
Protein Name	Tight junction protein ZO-1 (Tight junction protein 1) (Zona occludens protein 1) (Zonula occludens protein 1)
Human Gene Id	7082
Swiss-Prot	Q07157
Formulation	Liquid in PBS containing 50% glycerol, and 002% sodium azide
Source	Rabbit
Purification	The antibody was affinity-purified from rabbit antiserum by affinity-chromatography using epitope-specific immunogen
Concentration	1 mg/ml
Storage&Stability	-20°C/1 year
Subcellular Location	Cell membrane; Peripheral membrane protein; Cytoplasmic side Cell junction, tight junction Cell junction Cell junction, gap junction Cell projection, podosome Moves from the cytoplasm to the cell membrane concurrently with cell-cell contact (PubMed:7798316) At podosomal sites, is predominantly localized in the ring structure surrounding the actin core (PubMed:20930113) Colocalizes with SPEF1 at sites of cell-cell contact in intestinal epithelial cells (PubMed:31473225)
MW	-
Background	This gene encodes a protein located on a cytoplasmic membrane surface of intercellular tight junctions The encoded protein may be involved in signal transduction at cell-cell junctions Alternative splicing of this gene results in multiple transcript variants

Products Images:



Immunofluorescence analysis of A549. 1,primary Antibody(red) was diluted at 1:200(4°C overnight). 2, Goat Anti Rabbit IgG (H&L) - Alexa Fluor 594 Secondary antibody was diluted at 1:1000(room temperature, 50min).3, Picture B: DAPI(blue) 10min.



Zhao, Guo-Ping, et al. "Imidacloprid increases intestinal permeability by disrupting tight junctions." *Ecotoxicology and Environmental Safety* 222 (2021): 112476.