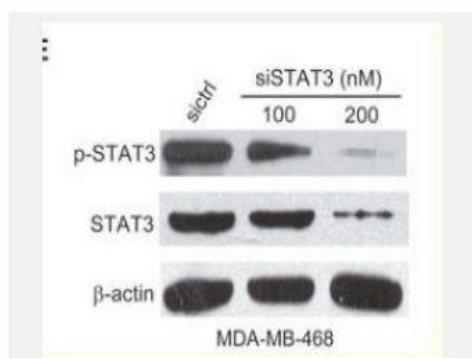


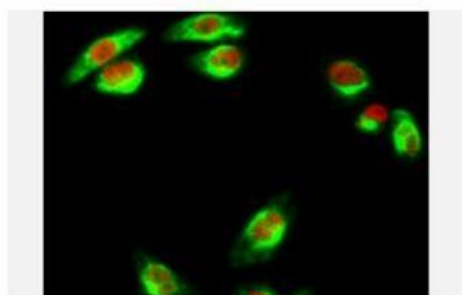
## Stat3 Polyclonal Antibody

<b>Catalog No.</b>	IPB0100
<b>Reactivity</b>	Human; Mouse; Rat
<b>Applications</b>	WB; IHC-p; IF/ICC; ELISA
<b>Dilution</b>	WB: 1:500-1:2000    IHC: 1:50-1:200    IF: 1:50-1:200    ELISA: 1:10000
<b>Gene Name</b>	STAT3
<b>Protein Name</b>	Signal transducer and activator of transcription 3
<b>Human Gene Id</b>	6774
<b>Swiss-Prot</b>	P40763
<b>Formulation</b>	Liquid in PBS containing 50% glycerol, 05% BSA and 002% sodium azide
<b>Source</b>	Rabbit
<b>Purification</b>	The antibody was affinity-purified from rabbit antiserum by affinity-chromatography using epitope-specific immunogen
<b>Concentration</b>	1 mg/ml
<b>Storage&amp;Stability</b>	-20°C/1 year
<b>Subcellular Location</b>	Cytoplasm Nucleus Shuttles between the nucleus and the cytoplasm Translocated into the nucleus upon tyrosine phosphorylation and dimerization, in response to signaling by activated FGFR1, FGFR2, FGFR3 or FGFR4 Constitutive nuclear presence is independent of tyrosine phosphorylation Predominantly present in the cytoplasm without stimuli Upon leukemia inhibitory factor (LIF) stimulation, accumulates in the nucleus The complex composed of BART and ARL2 plays an important role in the nuclear translocation and retention of STAT3 Identified in a complex with LYN and PAG1
<b>MW</b>	88068
<b>Background</b>	The protein encoded by this gene is a member of the STAT protein family In response to cytokines and growth factors, STAT family members are phosphorylated by the receptor associated kinases, and then form homo- or heterodimers that translocate to the cell nucleus where they act as transcription activators This protein is activated through phosphorylation in response to various cytokines and growth factors including IFNs, EGF, IL5, IL6, HGF, LIF and BMP2 This protein mediates the expression of a variety of genes in response to cell stimuli, and thus plays a key role in many cellular processes such as cell growth and apoptosis The small GTPase Rac1 has been shown to bind and regulate the activity of this protein PIAS3 protein is a specific inhibitor of this protein Mutations in this gene are associated with infantile-onset multisystem autoimmune disease and hyper

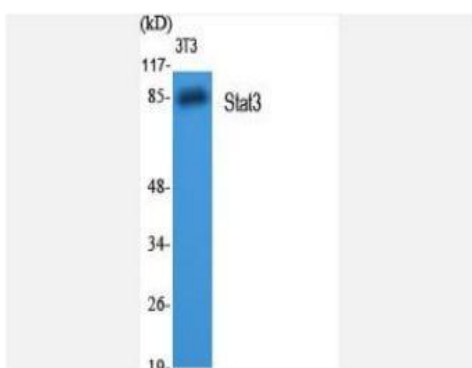
### Products Images:



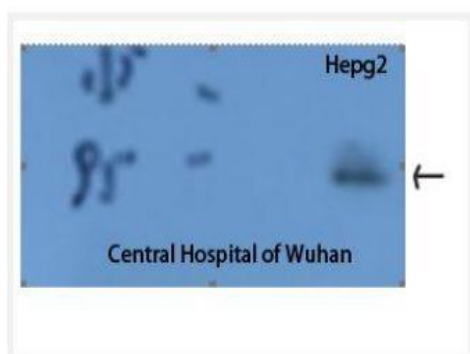
Cai, Xiaoli, et al. "Inflammatory factor TNF- $\alpha$  promotes the growth of breast cancer via the positive feedback loop of TNFR1/NF- $\kappa$ B (and/or p38)/p-STAT3/HBXIP/TNFR1." *Oncotarget* 8.35 (2017): 58338.



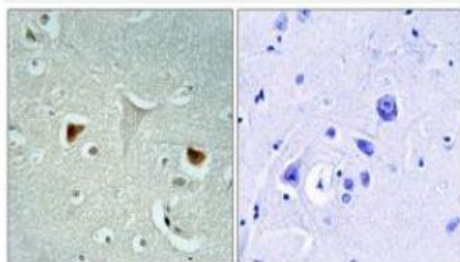
Immunofluorescence analysis of Hela cell. 1, Stat3 Polyclonal Antibody (red) was diluted at 1:200 (4° overnight). Caspase-8 Monoclonal Antibody (2G12) (green) was diluted at 1:200 (4° overnight). 2, Goat Anti Rabbit Alexa Fluor 594 Catalog: RS3611 was diluted at 1:1000 (room temperature, 50min). Goat Anti Mouse Alexa Fluor 488 Catalog: RS3208 was diluted at 1:1000 (room temperature, 50min).



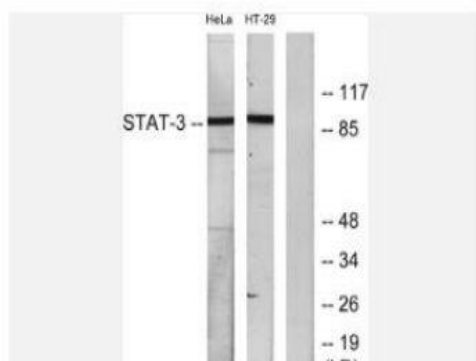
Western Blot analysis of various cells using Stat3 Polyclonal Antibody diluted at 1:2000



The picture was kindly provided by our customer



Immunohistochemistry analysis of paraffin-embedded human brain tissue, using STAT3 Antibody. The picture on the right is blocked with the synthesized peptide.



Western blot analysis of lysates from HeLa and HT-29 cells, using STAT3 Antibody. The lane on the right is blocked with the synthesized peptide.