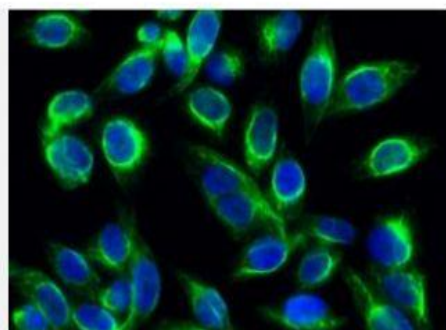


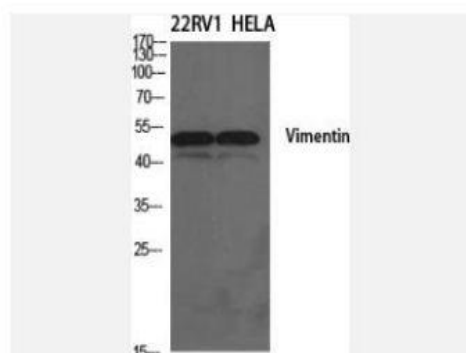
Vimentin Polyclonal Antibody

Catalog No.	IPB0099
Reactivity	Human; Mouse; Rat
Applications	WB; IHC-p; IF/ICC; ELISA
Dilution	WB: 1:500-1:2000 IHC: 1:50-1:200 IF: 1:50-1:200 ELISA: 1:20000
Gene Name	VIM
Protein Name	Vimentin
Human Gene Id	7431
Swiss-Prot	P08670
Formulation	Liquid in PBS containing 50% glycerol, 05% BSA and 002% sodium azide
Source	Rabbit
Purification	The antibody was affinity-purified from rabbit antiserum by affinity-chromatography using epitope-specific immunogen
Concentration	1 mg/ml
Storage&Stability	-20°C/1 year
Subcellular Location	Cytoplasm Cytoplasm, cytoskeleton Nucleus matrix Cell membrane
MW	53652
Background	This gene encodes a member of the intermediate filament family Intermediate filamentents, along with microtubules and actin microfilaments, make up the cytoskeleton The protein encoded by this gene is responsible for maintaining cell shape, integrity of the cytoplasm, and stabilizing cytoskeletal interactions It is also involved in the immune response, and controls the transport of low-density lipoprotein (LDL)-derived cholesterol from a lysosome to the site of esterification It functions as an organizer of a number of critical proteins involved in attachment, migration, and cell signaling Mutations in this gene causes a dominant, pulverulent cataract

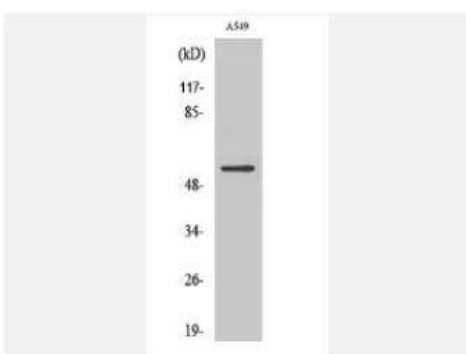
Products Images:



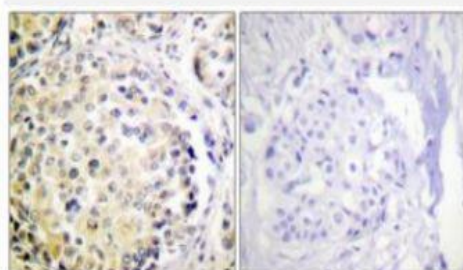
Immunofluorescence analysis of HeLa cell. 1,Vimentin Polyclonal Antibody(green) was diluted at 1:200(4° overnight). 2, Goat Anti Rabbit Alexa Fluor 488 Catalog:RS3211 was diluted at 1:1000(room temperature, 50min). 3 DAPI(blue) 10min.



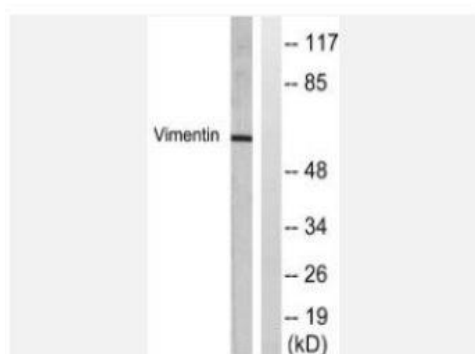
Western Blot analysis of various cells using Vimentin Polyclonal Antibody diluted at 1:1000. Secondary antibody(catalog#:RS0002) was diluted at 1:20000



Western Blot analysis of A549 cells using Vimentin Polyclonal Antibody diluted at 1:1000. Secondary antibody(catalog#:RS0002) was diluted at 1:20000



Immunohistochemistry analysis of paraffin-embedded human breast carcinoma tissue, using Vimentin Antibody. The picture on the right is blocked with the synthesized peptide.



Western blot analysis of lysates from A549 cells, treated with Nocodazole 1ug/ml 16h, using Vimentin Antibody. The lane on the right is blocked with the synthesized peptide.