

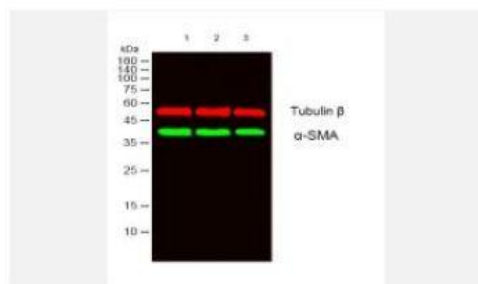
α -SMA Polyclonal Antibody

Catalog No.	IPB0097
Reactivity	Human; Mouse; Rat
Applications	WB; IHC-p; ELISA
Dilution	WB: 1:500-1:2000 IHC: 1:50-1:200 ELISA: 1:20000
Gene Name	ACTA2
Protein Name	Actin aortic smooth muscle
Human Gene Id	59
Swiss-Prot	P62736
Formulation	Liquid in PBS containing 50% glycerol, 05% BSA and 005% sodium azide
Source	Rabbit
Purification	The antibody was affinity-purified from rabbit antiserum by affinity-chromatography using epitope-specific immunogen
Concentration	1 mg/ml
Storage&Stability	-20°C/1 year
Subcellular Location	Cytoplasm, cytoskeleton
MW	42009
Background	The protein encoded by this gene belongs to the actin family of proteins, which are highly conserved proteins that play a role in cell motility, structure and integrity Alpha, beta and gamma actin isoforms have been identified, with alpha actins being a major constituent of the contractile apparatus, while beta and gamma actins are involved in the regulation of cell motility This actin is an alpha actin that is found in skeletal muscle Defects in this gene cause aortic aneurysm familial thoracic type 6 Multiple alternatively spliced variants, encoding the same protein, have been identified

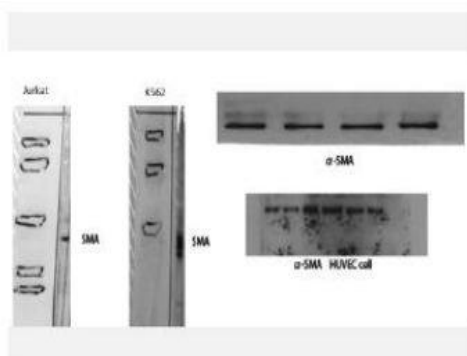
Products Images:



Xiao, Xiangcheng, et al. "Epigenetic repression of Krüppel-like factor 4 through Dnmt1 contributes to EMT in renal fibrosis." *International journal of molecular medicine* 35.6 (2015): 1596-1602.



Western blot analysis of lysates from 1) Jurkat, 2) K562, 3)HuvEC cells, (Green) primary antibody was diluted at 1:1000, 4°over night, secondary antibody(cat:RS23920)was diluted at 1:10000, 37° 1hour. (Red) Tubulin β Monoclonal Antibody(5G3) (cat:YM3030) antibody was diluted at 1:5000 as loading control, 4° over night,secondary antibody(cat:RS23710)was diluted at 1:10000, 37° 1hour.



Western Blot analysis of various cells using α-SMA Polyclonal Antibody diluted at 1:500. Secondary antibody(catalog#:RS0002) was diluted at 1:20000