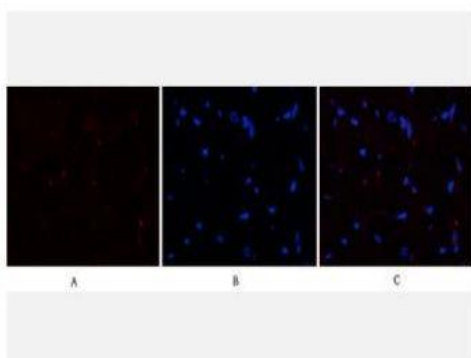


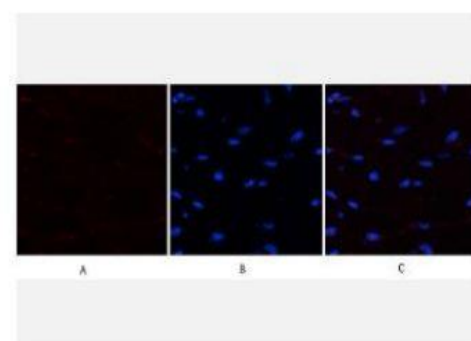
PTEN Polyclonal Antibody

| | |
|------------------------------|---|
| Catalog No. | IPB0095 |
| Reactivity | Human; Mouse; Rat |
| Applications | IF/ICC; IHC-p; ELISA |
| Dilution | IF: 1:50-200 IHC: 1:50-1:200 WB: 1:500-2000 ELISA: 1:10000-20000 |
| Gene Name | PTEN MMAC1 TEP1 |
| Protein Name | PTEN |
| Human Gene Id | 5728 |
| Swiss-Prot | P60484 |
| Formulation | Liquid in PBS containing 50% glycerol, 05% BSA and 002% sodium azide |
| Source | Rabbit |
| Purification | The antibody was affinity-purified from rabbit antiserum by affinity-chromatography using epitope-specific immunogen |
| Concentration | 1 mg/ml |
| Storage&Stability | -20°C/1 year |
| Subcellular Location | Cytoplasm Nucleus Nucleus, PML body Monoubiquitinated form is nuclear Nonubiquitinated form is cytoplasmic Colocalized with PML and USP7 in PML nuclear bodies (PubMed:18716620) XIAP:BIRC4 promotes its nuclear localization (PubMed:19473982) [Isoform alpha]: Secreted May be secreted via a classical signal peptide and reenter into cells with the help of a poly-Arg motif |
| MW | 47166 |
| Background | This gene was identified as a tumor suppressor that is mutated in a large number of cancers at high frequency The protein encoded by this gene is a phosphatidylinositol-3,4,5-trisphosphate 3-phosphatase It contains a tensin like domain as well as a catalytic domain similar to that of the dual specificity protein tyrosine phosphatases Unlike most of the protein tyrosine phosphatases, this protein preferentially dephosphorylates phosphoinositide substrates It negatively regulates intracellular levels of phosphatidylinositol-3,4,5-trisphosphate in cells and functions as a tumor suppressor by negatively regulating AKT:PKB signaling pathway The use of a non-canonical (CUG) upstream initiation site produces a longer isoform that initiates translation with a leucine, and is thought to be preferentially associated with the mitochondrial inner membrane |

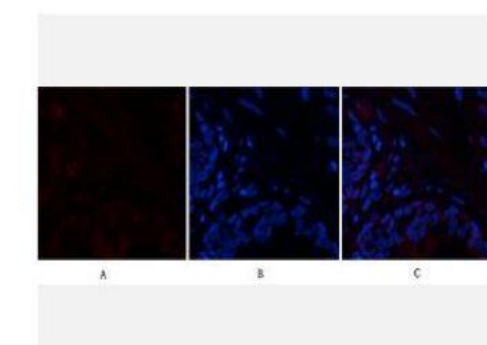
Products Images:



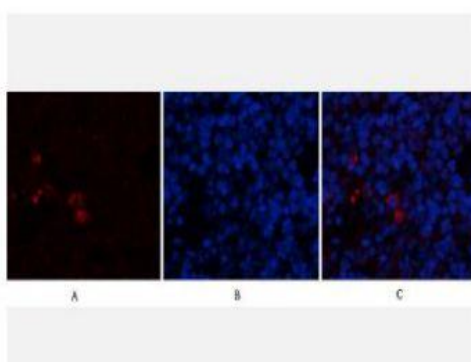
Immunofluorescence analysis of human-heart tissue. 1,PTEN Polyclonal Antibody(red) was diluted at 1:200(4°C,overnight). 2, Cy3 labled Secondary antibody was diluted at 1:300(room temperature, 50min).3, Picture B: DAPI(blue) 10min. Picture A:Target. Picture B: DAPI. Picture C: merge of A+B



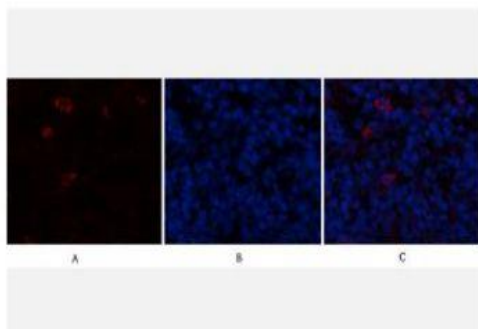
Immunofluorescence analysis of human-heart tissue. 1,PTEN Polyclonal Antibody(red) was diluted at 1:200(4°C,overnight). 2, Cy3 labled Secondary antibody was diluted at 1:300(room temperature, 50min).3, Picture B: DAPI(blue) 10min. Picture A:Target. Picture B: DAPI. Picture C: merge of A+B



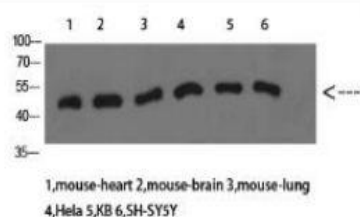
Immunofluorescence analysis of human-lung tissue. 1,PTEN Polyclonal Antibody(red) was diluted at 1:200(4°C,overnight). 2, Cy3 labled Secondary antibody was diluted at 1:300(room temperature, 50min).3, Picture B: DAPI(blue) 10min. Picture A:Target. Picture B: DAPI. Picture C: merge of A+B



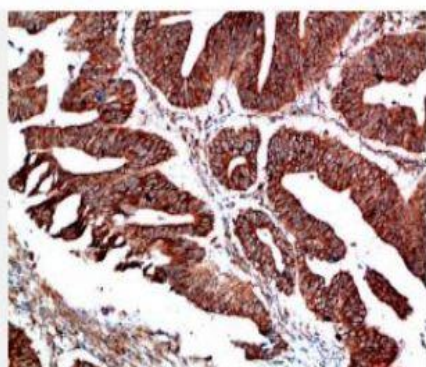
Immunofluorescence analysis of rat-spleen tissue. 1,PTEN Polyclonal Antibody(red) was diluted at 1:200(4°C,overnight). 2, Cy3 labled Secondary antibody was diluted at 1:300(room temperature, 50min).3, Picture B: DAPI(blue) 10min. Picture A:Target. Picture B: DAPI. Picture C: merge of A+B



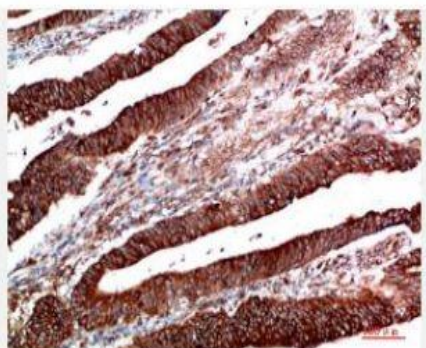
Immunofluorescence analysis of rat-spleen tissue. 1, PTEN Polyclonal Antibody (red) was diluted at 1:200 (4°C, overnight). 2, Cy3 labeled Secondary antibody was diluted at 1:300 (room temperature, 50 min). 3, Picture B: DAPI (blue) 10 min. Picture A: Target. Picture B: DAPI. Picture C: merge of A+B



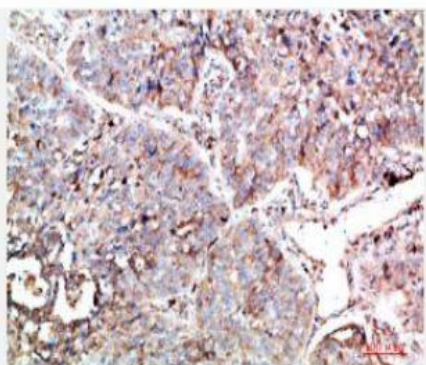
Western Blot analysis of mouse-heart mouse-brain mouse-lung Hela KB SH-SY5Y cells using PTEN Polyclonal Antibody diluted at 1:1000. Secondary antibody (catalog#: RS0002) was diluted at 1:20000



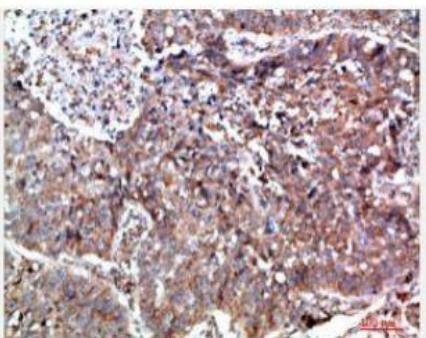
Immunohistochemical analysis of paraffin-embedded human colon-cancer, antibody was diluted at 1:200



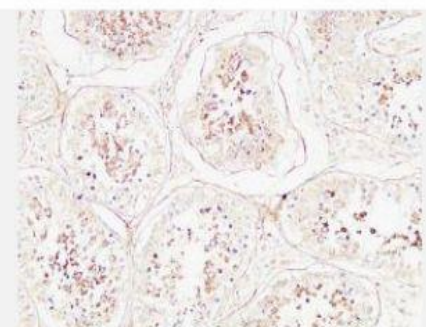
Immunohistochemical analysis of paraffin-embedded human colon-cancer, antibody was diluted at 1:200



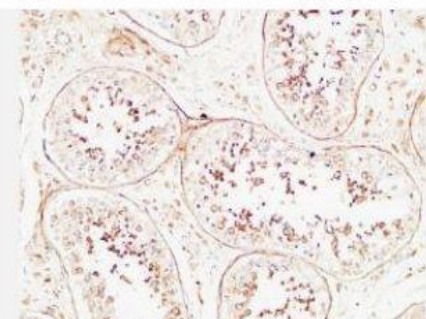
Immunohistochemical analysis of paraffin-embedded human-lung-cancer, antibody was diluted at 1:200



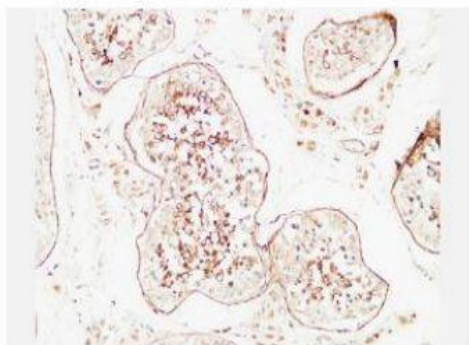
Immunohistochemical analysis of paraffin-embedded human-lung-cancer, antibody was diluted at 1:200



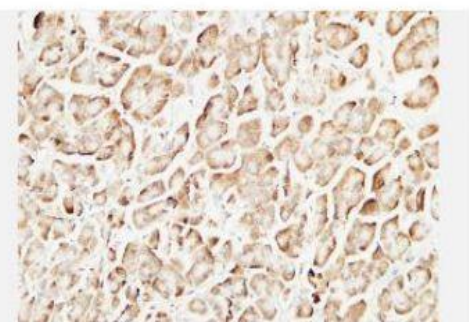
Immunohistochemical analysis of paraffin-embedded Human testis. 1, Antibody was diluted at 1:200(4° overnight). 2, High-pressure and temperature EDTA, pH8.0 was used for antigen retrieval. 3, Secondary antibody was diluted at 1:200(room temperature, 30min).



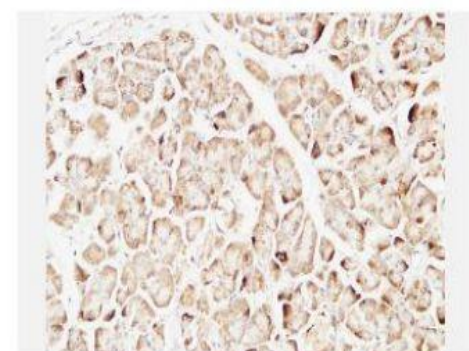
Immunohistochemical analysis of paraffin-embedded Human testis. 1, Antibody was diluted at 1:200(4° overnight). 2, High-pressure and temperature EDTA, pH8.0 was used for antigen retrieval. 3, Secondary antibody was diluted at 1:200(room temperature, 30min).



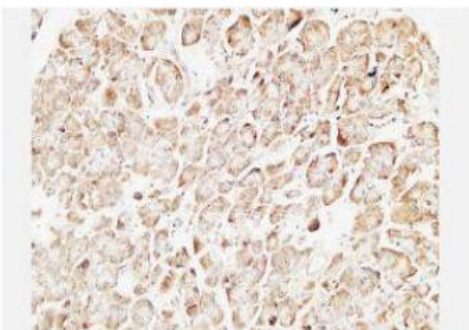
Immunohistochemical analysis of paraffin-embedded Human testis. 1, Antibody was diluted at 1:200(4° overnight). 2, High-pressure and temperature EDTA, pH8.0 was used for antigen retrieval. 3,Secondary antibody was diluted at 1:200(room temperature, 30min).



Immunohistochemical analysis of paraffin-embedded Human pancreas. 1, Antibody was diluted at 1:200(4° overnight). 2, High-pressure and temperature EDTA, pH8.0 was used for antigen retrieval. 3,Secondary antibody was diluted at 1:200(room temperature, 30min).



Immunohistochemical analysis of paraffin-embedded Human pancreas. 1, Antibody was diluted at 1:200(4° overnight). 2, High-pressure and temperature EDTA, pH8.0 was used for antigen retrieval. 3,Secondary antibody was diluted at 1:200(room temperature, 30min).



Immunohistochemical analysis of paraffin-embedded Human pancreas. 1, Antibody was diluted at 1:200(4° overnight). 2, High-pressure and temperature EDTA, pH8.0 was used for antigen retrieval. 3,Secondary antibody was diluted at 1:200(room temperature, 30min).