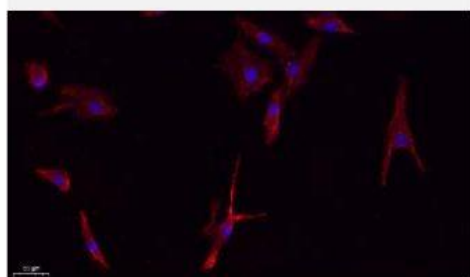


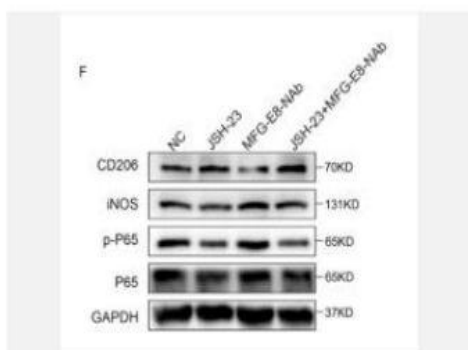
NOS2 Polyclonal Antibody

Catalog No.	IPB0090
Reactivity	Human; Mouse; Rat
Applications	IF/ICC; WB; IHC-p; ELISA
Dilution	IF: 1:50-200 WB: 1:500-2000 ELISA: 1:10000-20000 IHC: 1:50-1:200
Gene Name	NOS2, INOS
Protein Name	Nitric oxide synthase inducible
Human Gene Id	4843
Swiss-Prot	P35228
Formulation	Liquid in PBS containing 50% glycerol, 05% BSA and 002% sodium azide
Source	Rabbit
Purification	The antibody was affinity-purified from rabbit antiserum by affinity-chromatography using epitope-specific immunogen
Concentration	1 mg/ml
Storage&Stability	-20°C/1 year
Subcellular Location	Cytoplasm, cytosol Localizes as discrete foci scattered throughout the cytosol and in the presence of SPSB1 and SPSB4, exhibits a more diffuse cytosolic localization
MW	131117
Background	Nitric oxide is a reactive free radical which acts as a biologic mediator in several processes, including neurotransmission and antimicrobial and antitumoral activities This gene encodes a nitric oxide synthase which is expressed in liver and is inducible by a combination of lipopolysaccharide and certain cytokines Three related pseudogenes are located within the Smith-Magenis syndrome region on chromosome 17

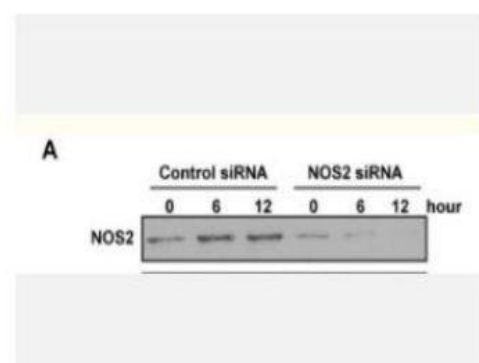
Products Images:



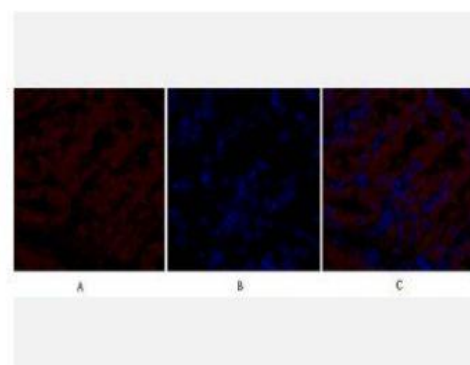
Immunofluorescence analysis of A549. 1,primary Antibody(red) was diluted at 1:200(4°C overnight). 2, Goat Anti Rabbit IgG (H&L) - Alexa Fluor 594 Secondary antibody was diluted at 1:1000(room temperature, 50min).3, Picture B: DAPI(blue) 10min.



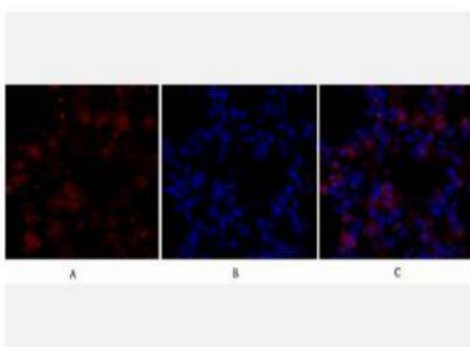
Lu, Y., Liu, L., Pan, J. et al. MFG-E8 regulated by miR-99b-5p protects against osteoarthritis by targeting chondrocyte senescence and macrophage reprogramming via the NF- κ B pathway. *Cell Death Dis* 12, 533 (2021).



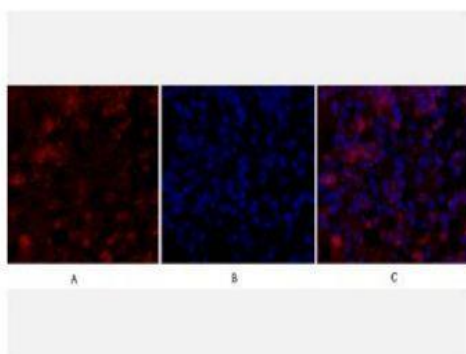
Zhu, Xiao-Ming, et al. "PM2. 5 induces autophagy-mediated cell death via NOS2 signaling in human bronchial epithelium cells." *International journal of biological sciences* 14.5 (2018): 557.



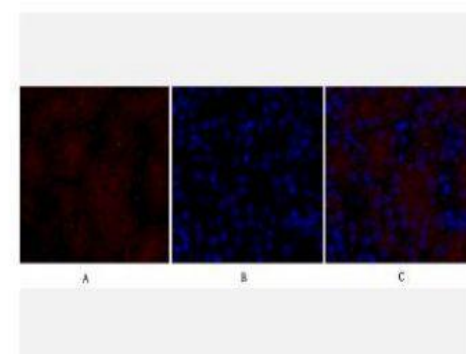
Immunofluorescence analysis of rat-kidney tissue. 1, NOS2 Polyclonal Antibody (red) was diluted at 1:200 (4°C, overnight). 2, Cy3 labeled Secondary antibody was diluted at 1:300 (room temperature, 50min). 3, Picture B: DAPI (blue) 10min. Picture A: Target. Picture B: DAPI. Picture C: merge of A+B



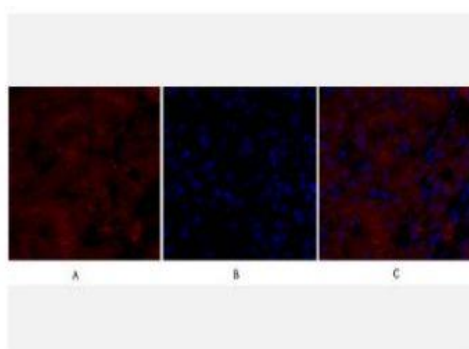
Immunofluorescence analysis of mouse-lung tissue. 1, NOS2 Polyclonal Antibody (red) was diluted at 1:200 (4°C, overnight). 2, Cy3 labeled Secondary antibody was diluted at 1:300 (room temperature, 50min). 3, Picture B: DAPI (blue) 10min. Picture A: Target. Picture B: DAPI. Picture C: merge of A+B



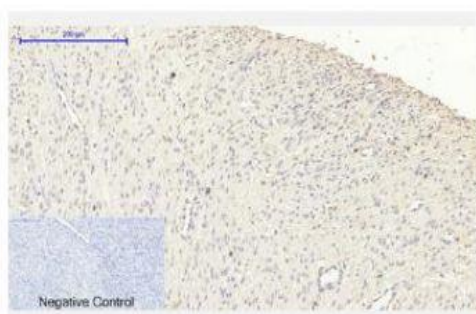
Immunofluorescence analysis of mouse-lung tissue. 1, NOS2 Polyclonal Antibody (red) was diluted at 1:200 (4°C, overnight). 2, Cy3 labeled Secondary antibody was diluted at 1:300 (room temperature, 50min). 3, Picture B: DAPI (blue) 10min. Picture A: Target. Picture B: DAPI. Picture C: merge of A+B



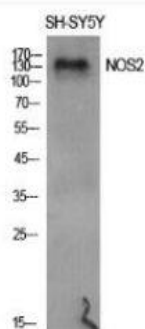
Immunofluorescence analysis of mouse-kidney tissue. 1, NOS2 Polyclonal Antibody (red) was diluted at 1:200 (4°C, overnight). 2, Cy3 labeled Secondary antibody was diluted at 1:300 (room temperature, 50min). 3, Picture B: DAPI (blue) 10min. Picture A: Target. Picture B: DAPI. Picture C: merge of A+B



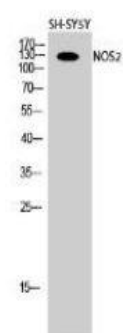
Immunofluorescence analysis of mouse-kidney tissue. 1, NOS2 Polyclonal Antibody (red) was diluted at 1:200 (4°C, overnight). 2, Cy3 labeled Secondary antibody was diluted at 1:300 (room temperature, 50min). 3, Picture B: DAPI (blue) 10min. Picture A: Target. Picture B: DAPI. Picture C: merge of A+B



Immunohistochemical analysis of paraffin-embedded Human-uterus-cancer tissue. 1, NOS2 Polyclonal Antibody was diluted at 1:200 (4°C, overnight). 2, Sodium citrate pH 6.0 was used for antibody retrieval (>98°C, 20min). 3, Secondary antibody was diluted at 1:200 (room temperature, 30min). Negative control was used by secondary antibody only.



Western Blot analysis of various cells using NOS2 Polyclonal Antibody diluted at 1:500



Western Blot analysis of SH-SY5Y cells using NOS2 Polyclonal Antibody diluted at 1:500



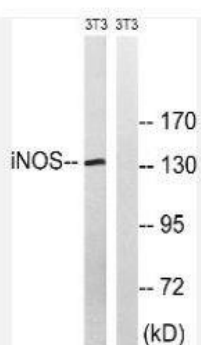
Western blot analysis of 3T3 lysis using NOS2 antibody. Antibody was diluted at 1:500



Western blot analysis of 3T3 lysis using NOS2 antibody. Antibody was diluted at 1:500



Western blot analysis of 3T3 lysis using NOS2 antibody.
Antibody was diluted at 1:500



Western blot analysis of lysates from NIH/3T3 cells, using
iNOS Antibody. The lane on the right is blocked with the
synthesized peptide.