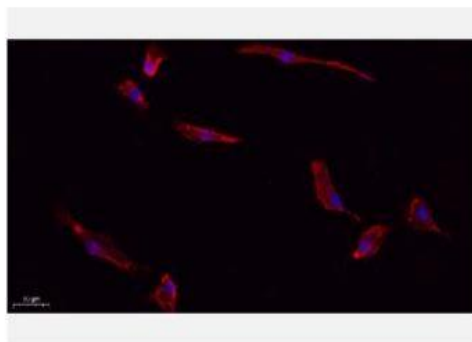


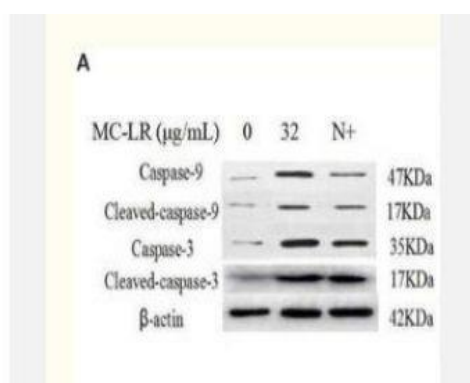
Caspase-3 Polyclonal Antibody

Catalog No.	IPB0089
Reactivity	Human; Mouse; Rat
Applications	WB; IHC-p; IF/ICC; ELISA
Dilution	WB: 1:500-1:2000 IHC-p: 1:100-1:200 ELISA: 1:20000 IF: 1:50-1:200
Gene Name	CASP3
Protein Name	Caspase3
Human Gene Id	836
Swiss-Prot	P42574
Formulation	Liquid in PBS containing 50% glycerol, 05% BSA and 002% sodium azide
Source	Rabbit
Purification	The antibody was affinity-purified from rabbit antiserum by affinity-chromatography using epitope-specific immunogen
Concentration	1 mg/ml
Storage&Stability	-20°C/1 year
Subcellular Location	Cytoplasm
MW	31608
Background	This gene encodes a protein which is a member of the cysteine-aspartic acid protease (caspase) family Sequential activation of caspases plays a central role in the execution-phase of cell apoptosis Caspases exist as inactive proenzymes which undergo proteolytic processing at conserved aspartic residues to produce two subunits, large and small, that dimerize to form the active enzyme This protein cleaves and activates caspases 6, 7 and 9, and the protein itself is processed by caspases 8, 9 and 10 It is the predominant caspase involved in the cleavage of amyloid-beta 4A precursor protein, which is associated with neuronal death in Alzheimer's disease Alternative splicing of this gene results in two transcript variants that encode the same protein

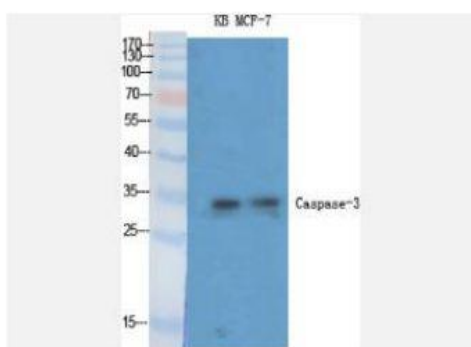
Products Images:



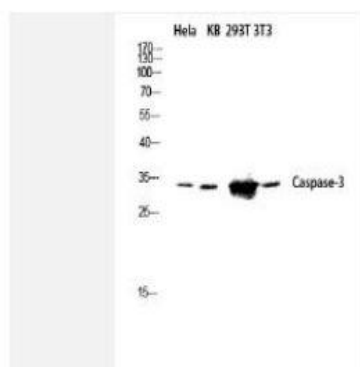
Immunofluorescence analysis of A549. 1,primary Antibody(red) was diluted at 1:200(4°C overnight). 2, Goat Anti Rabbit IgG (H&L) - Alexa Fluor 594 Secondary antibody was diluted at 1:1000(room temperature, 50min).3, Picture B: DAPI(blue) 10min.



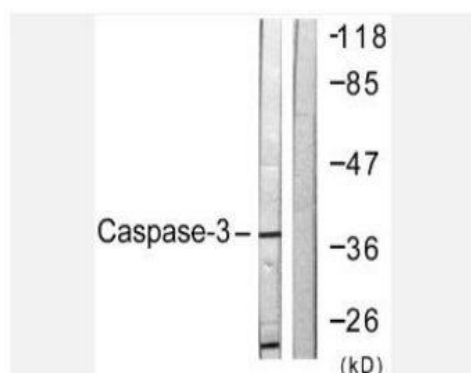
Huang, Hui, et al. "Microcystin-LR Induced Apoptosis in Rat Sertoli Cells via the Mitochondrial Caspase-Dependent Pathway: Role of Reactive Oxygen Species." *Frontiers in physiology* 7 (2016): 397.



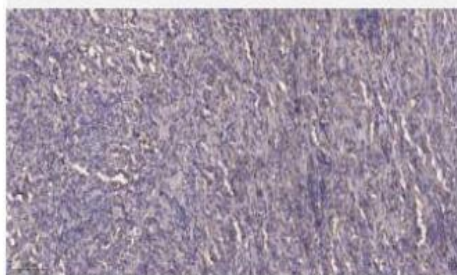
Western Blot analysis of various cells using Caspase-3 Polyclonal Antibody diluted at 1:1000



Western blot analysis of Hela KB 293T 3T3 lysis using Caspase-3 antibody. Antibody was diluted at 1:1000



Western blot analysis of lysates from NIH/3T3 cells, treated with Etoposide 25uM 24h, using Caspase 3 Antibody. The lane on the right is blocked with the synthesized peptide.



Immunohistochemical analysis of paraffin-embedded human Colon cancer. 1, Antibody was diluted at 1:200(4° overnight). 2, Tris-EDTA,pH9.0 was used for antigen retrieval. 3,Secondary antibody was diluted at 1:200(room temperature, 45min).