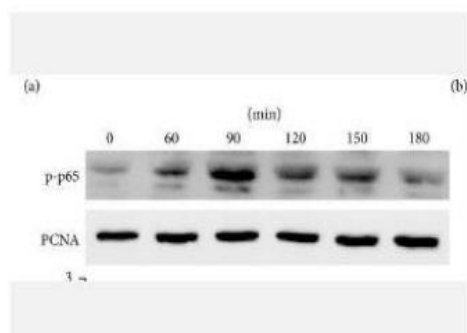


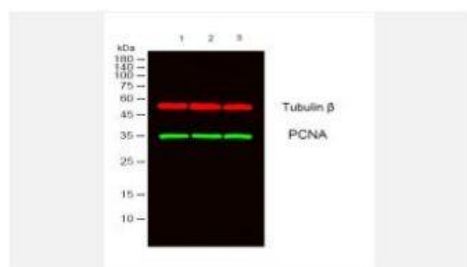
PCNA Polyclonal Antibody

Catalog No.	IPB0066
Reactivity	Human; Mouse; Rat; Monkey
Applications	WB; IHC-p; ELISA
Dilution	WB: 1:500-1:2000 IHC: 1:50-1:200 ELISA: 1:20000
Gene Name	PCNA
Protein Name	Proliferating cell nuclear antigen
Human Gene Id	5111
Swiss-Prot	P12004
Formulation	Liquid in PBS containing 50% glycerol, 05% BSA and 002% sodium azide
Source	Rabbit
Purification	The antibody was affinity-purified from rabbit antiserum by affinity-chromatography using epitope-specific immunogen
Concentration	1 mg/ml
Storage&Stability	-20°C/1 year
Subcellular Location	Nucleus Colocalizes with CREBBP, EP300 and POLD1 to sites of DNA damage (PubMed:24939902) Forms nuclear foci representing sites of ongoing DNA replication and vary in morphology and number during S phase (PubMed:15543136) Co-localizes with SMARCA5:SNF2H and BAZ1B:WSTF at replication foci during S phase (PubMed:15543136) Together with APEX2, is redistributed in discrete nuclear foci in presence of oxidative DNA damaging agents
MW	28769
Background	The protein encoded by this gene is found in the nucleus and is a cofactor of DNA polymerase delta The encoded protein acts as a homotrimer and helps increase the processivity of leading strand synthesis during DNA replication In response to DNA damage, this protein is ubiquitinated and is involved in the RAD6-dependent DNA repair pathway Two transcript variants encoding the same protein have been found for this gene Pseudogenes of this gene have been described on chromosome 4 and on the X chromosome

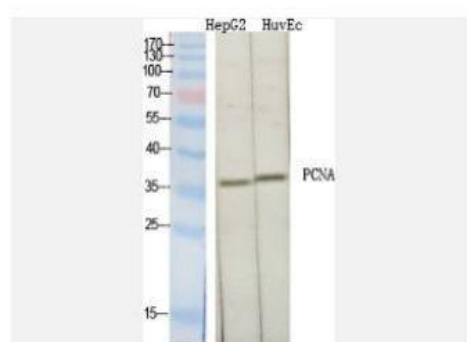
Products Images:



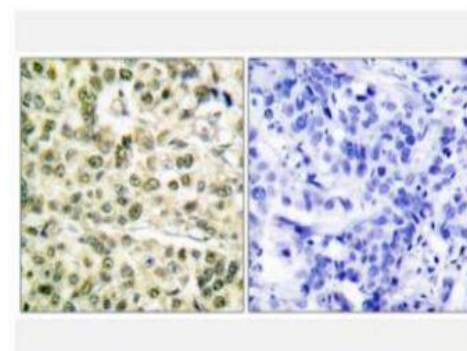
Yan, Jinchuan, et al. "CD137 regulates NFATc1 expression in mouse VSMCs through TRAF6/NF-κB p65 signaling pathway." *Mediators of inflammation* 2015 (2015).



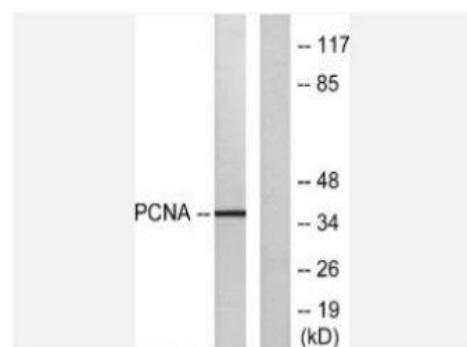
Western blot analysis of lysates from 1) HepG2, 2) HuvEC, 3) COS7 cells, (Green) primary antibody was diluted at 1:1000, 4° over night, secondary antibody(cat:RS23920) was diluted at 1:10000, 37° 1 hour. (Red) Tubulin β Monoclonal Antibody(5G3) (cat:YM3030) antibody was diluted at 1:5000 as loading control, 4° over night, secondary antibody(cat:RS23710) was diluted at 1:10000, 37° 1 hour.



Western Blot analysis of various cells using PCNA Polyclonal Antibody diluted at 1:2000 cells nucleus extracted by Minute TM Cytoplasmic and Nuclear Fractionation kit (SC-003, Invent biotech, MN, USA).



Immunohistochemistry analysis of paraffin-embedded human breast carcinoma tissue, using PCNA Antibody. The picture on the right is blocked with the synthesized peptide.



Western blot analysis of lysates from HepG2 cells, using PCNA Antibody. The lane on the right is blocked with the synthesized peptide.