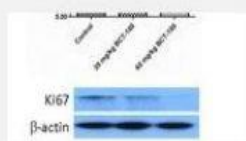


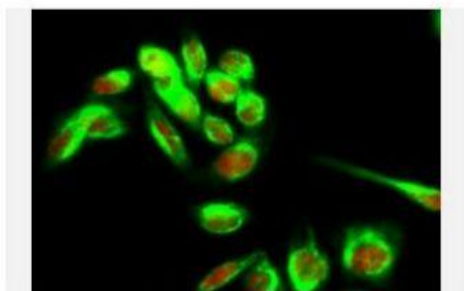
Ki-67 Polyclonal Antibody

Catalog No.	IPB0064
Reactivity	Human; Mouse; Rat
Applications	IHC-p; IF/ICC; ELISA
Dilution	IHC: 1:100-1:200 IF: 1:50-1:200 ELISA: 1:20000
Gene Name	MKI67
Protein Name	Antigen KI-67
Human Gene Id	4288
Swiss-Prot	P46013
Formulation	Liquid in PBS containing 50% glycerol, 05% BSA and 002% sodium azide
Source	Rabbit
Purification	The antibody was affinity-purified from rabbit antiserum by affinity-chromatography using epitope-specific immunogen
Concentration	1 mg/ml
Storage&Stability	-20°C/1 year
Subcellular Location	Chromosome Nucleus Nucleus, nucleolus Associates with the surface of the mitotic chromosome, the perichromosomal layer, and covers a substantial fraction of the mitotic chromosome surface (PubMed:27362226) Associates with satellite DNA in G1 phase (PubMed:9510506) Binds tightly to chromatin in interphase, chromatin-binding decreases in mitosis when it associates with the surface of the condensed chromosomes (PubMed:15896774, PubMed:22002106) Predominantly localized in the G1 phase in the perinucleolar region, in the later phases it is also detected throughout the nuclear interior, being predominantly localized in the nuclear matrix (PubMed:22002106)
MW	358694
Background	This gene encodes a nuclear protein that is associated with and may be necessary for cellular proliferation Alternatively spliced transcript variants have been described A related pseudogene exists on chromosome X

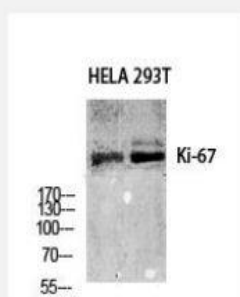
Products Images:



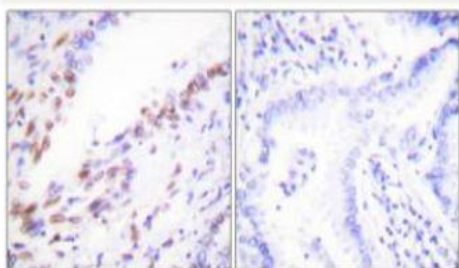
Lam, Sze-Kwan, et al. "Growth suppressive effect of pegylated arginase in malignant pleural mesothelioma xenografts." *Respiratory research* 18.1 (2017): 80.



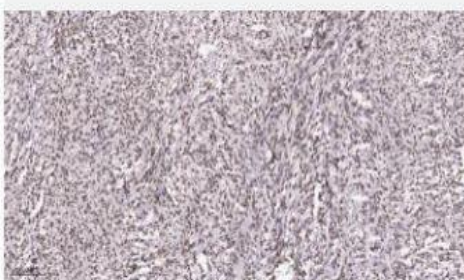
Immunofluorescence analysis of HeLa cell. 1, Ki-67 Polyclonal Antibody (red) was diluted at 1:200 (4° overnight). HSP70 Monoclonal Antibody (3G10) (green) was diluted at 1:200 (4° overnight). 2, Goat Anti Rabbit Alexa Fluor 594 Catalog: RS3611 was diluted at 1:1000 (room temperature, 50min). Goat Anti Mouse Alexa Fluor 488 Catalog: RS3208 was diluted at 1:1000 (room temperature, 50min).



Western Blot analysis of various cells using Ki-67 Polyclonal Antibody diluted at 1:1000



Immunohistochemistry analysis of paraffin-embedded human lung carcinoma tissue, using Ki67 Antibody. The picture on the right is blocked with the synthesized peptide.



Immunohistochemistry analysis of paraffin-embedded human Gastrointestinal stromal tumor tissue, using Ki67 Antibody.