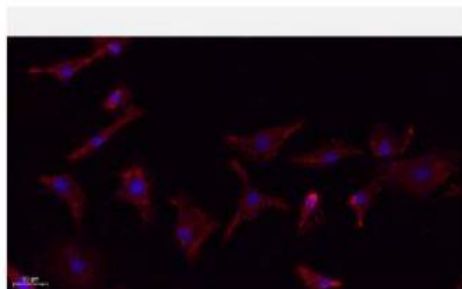


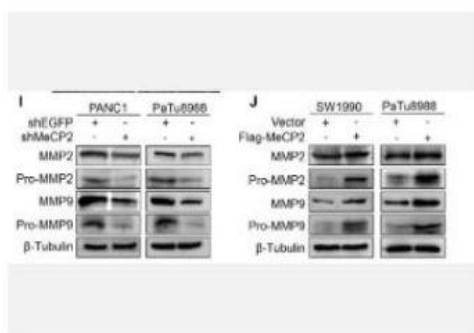
MMP-9 Polyclonal Antibody

Catalog No.	IPB0053
Reactivity	Human; Mouse; Rat
Applications	WB; IHC-p; IF/ICC; ELISA
Dilution	WB: 1:500-1:2000 IHC-p: 1:100-1:200 ELISA: 1:20000 IF: 1:50-1:200
Gene Name	MMP9
Protein Name	Matrix metalloproteinase-9
Human Gene Id	4318
Swiss-Prot	P14780
Formulation	Liquid in PBS containing 50% glycerol, 05% BSA and 002% sodium azide
Source	Rabbit
Purification	The antibody was affinity-purified from rabbit antiserum by affinity-chromatography using epitope-specific immunogen
Concentration	1 mg/ml
Storage&Stability	-20°C/1 year
Subcellular Location	Secreted, extracellular space, extracellular matrix
MW	78427
Background	Proteins of the matrix metalloproteinase (MMP) family are involved in the breakdown of extracellular matrix in normal physiological processes, such as embryonic development, reproduction, and tissue remodeling, as well as in disease processes, such as arthritis and metastasis Most MMP's are secreted as inactive proproteins which are activated when cleaved by extracellular proteinases The enzyme encoded by this gene degrades type IV and V collagens Studies in rhesus monkeys suggest that the enzyme is involved in IL-8-induced mobilization of hematopoietic progenitor cells from bone marrow, and murine studies suggest a role in tumor-associated tissue remodeling

Products Images:



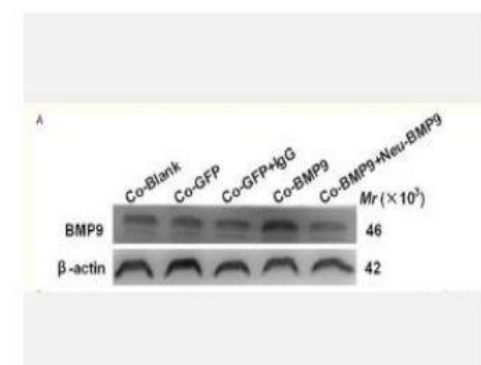
Immunofluorescence analysis of A549. 1,primary Antibody(red) was diluted at 1:200(4°C overnight). 2, Goat Anti Rabbit IgG (H&L) - Alexa Fluor 594 Secondary antibody was diluted at 1:1000(room temperature, 50min).3, Picture B: DAPI(blue) 10min.



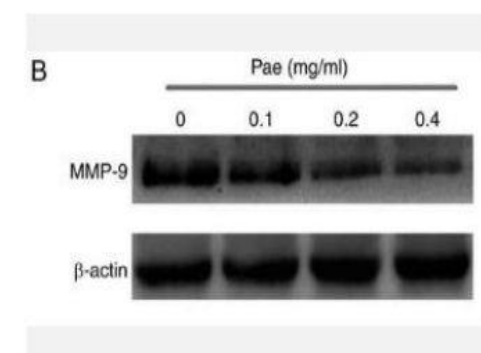
Wang, H., Li, J., He, J. et al. Methyl-CpG-binding protein 2 drives the Furin/TGF- β 1/Smad axis to promote epithelial-mesenchymal transition in pancreatic cancer cells. *Oncogenesis* 9, 76 (2020).



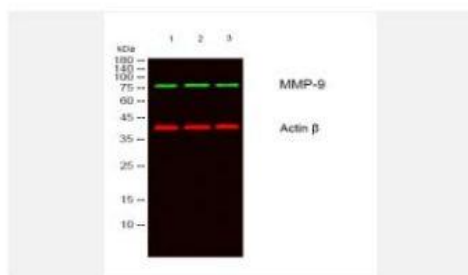
Zou, Guoying, et al. "Inhibin B suppresses anoikis resistance and migration through the transforming growth factor- β signaling pathway in nasopharyngeal carcinoma." *Cancer science* 109.11 (2018): 3416.



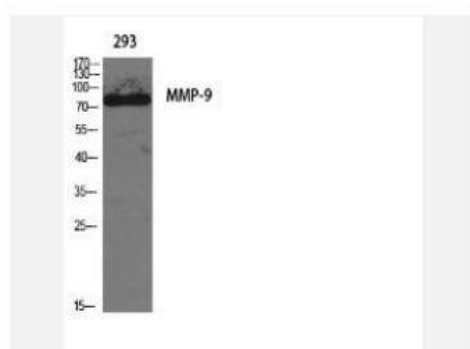
Wang, Wei, et al. "Biological roles of human bone morphogenetic protein 9 in the bone microenvironment of human breast cancer MDA-MB-231 cells." *American journal of translational research* 7.9 (2015): 1660.



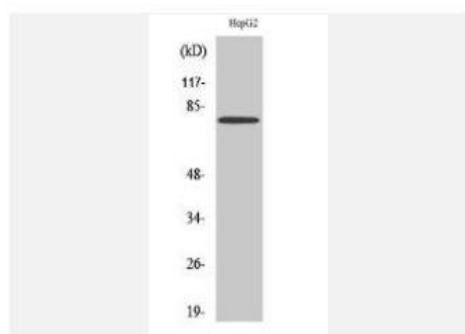
Lyu, Zhong-Kuan, et al. "Paeonol exerts potential activities to inhibit the growth, migration and invasion of human gastric cancer BGC823 cells via downregulating MMP-2 and MMP-9." *Molecular medicine reports* 16.5 (2017): 7513-7519.



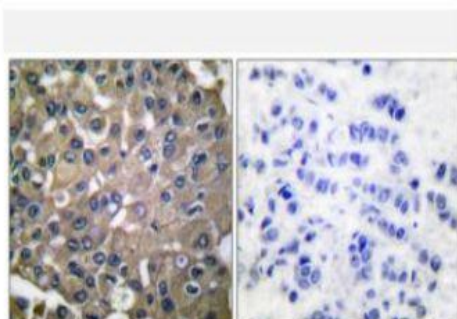
Western blot analysis of lysates from 1) 293, 2) HEPG2, 3) K562 cells, (Green) primary antibody was diluted at 1:1000, 4° over night, secondary antibody(cat:RS23920)was diluted at 1:10000, 37° 1hour. (Red) Actin β Monoclonal Antibody(5B7) (cat:YM3028) antibody was diluted at 1:5000 as loading control, 4° over night,secondary antibody(cat:RS23710)was diluted at 1:10000, 37° 1hour.



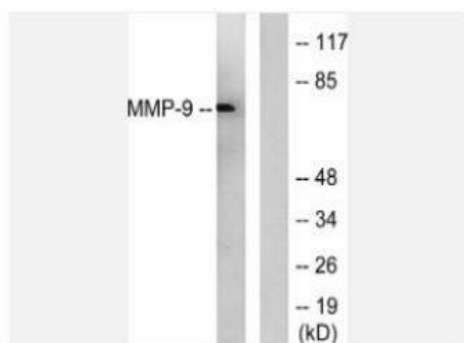
Western Blot analysis of various cells using MMP-9 Polyclonal Antibody diluted at 1:1000



Western Blot analysis of HepG2 cells using MMP-9 Polyclonal Antibody diluted at 1:1000



Immunohistochemistry analysis of paraffin-embedded human breast carcinoma tissue, using MMP-9 Antibody. The picture on the right is blocked with the synthesized peptide.



Western blot analysis of lysates from HepG2 cells, using MMP-9 Antibody. The lane on the right is blocked with the synthesized peptide.