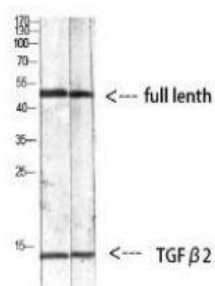


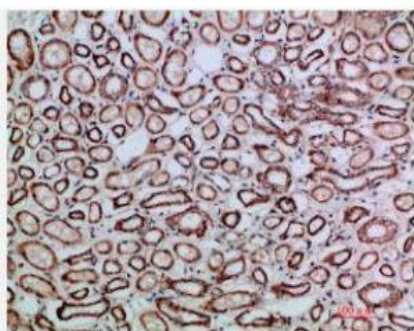
## TGFβ2 Polyclonal Antibody

<b>Catalog No.</b>	IPB0049
<b>Reactivity</b>	Human; Mouse; Rat
<b>Applications</b>	WB; IHC-p; ELISA
<b>Dilution</b>	WB: 1:500-2000    IHC: 1:50-1:200    ELISA: 1:10000-20000
<b>Gene Name</b>	TGFB2
<b>Protein Name</b>	Transforming growth factor beta-2 (TGF-beta-2) (BSC-1 cell growth inhibitor) (Cetermin) (Glioblastoma-derived T-cell suppressor factor) (G-TSF) (Polyergin)
<b>Human Gene Id</b>	7042
<b>Swiss-Prot</b>	P61812
<b>Formulation</b>	Liquid in PBS containing 50% glycerol, 05% BSA and 002% sodium azide
<b>Source</b>	Rabbit
<b>Purification</b>	The antibody was affinity-purified from rabbit antiserum by affinity-chromatography using epitope-specific immunogen
<b>Concentration</b>	1 mg/ml
<b>Storage&amp;Stability</b>	-20°C/1 year
<b>Subcellular Location</b>	[Latency-associated peptide]: Secreted, extracellular space, extracellular matrix [Transforming growth factor beta-2]: Secreted
<b>MW</b>	-
<b>Background</b>	This gene encodes a secreted ligand of the TGF-beta (transforming growth factor-beta) superfamily of proteins Ligands of this family bind various TGF-beta receptors leading to recruitment and activation of SMAD family transcription factors that regulate gene expression The encoded preproprotein is proteolytically processed to generate a latency-associated peptide (LAP) and a mature peptide, and is found in either a latent form composed of a mature peptide homodimer, a LAP homodimer, and a latent TGF-beta binding protein, or in an active form consisting solely of the mature peptide homodimer The mature peptide may also form heterodimers with other TGF-beta family members Disruption of the TGF-beta:SMAD pathway has been implicated in a variety of human cancers A chromosomal translocation that includes this gene is associated with Peters&apos

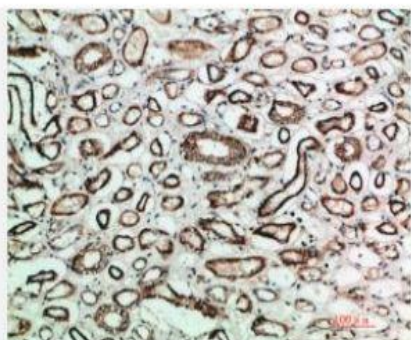
### Products Images:



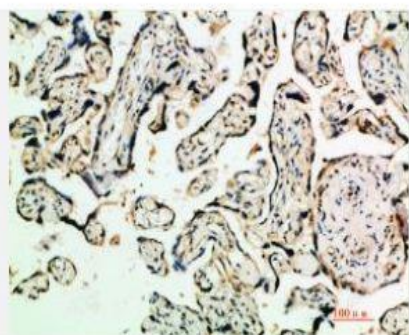
Western blot analysis of mouse-kidney 293T mouse-lung lysate, antibody was diluted at 1000. Secondary antibody(catalog#:RS0002) was diluted at 1:20000



Immunohistochemical analysis of paraffin-embedded human-kidney, antibody was diluted at 1:200



Immunohistochemical analysis of paraffin-embedded human-kidney, antibody was diluted at 1:200



Immunohistochemical analysis of paraffin-embedded human-placenta, antibody was diluted at 1:200