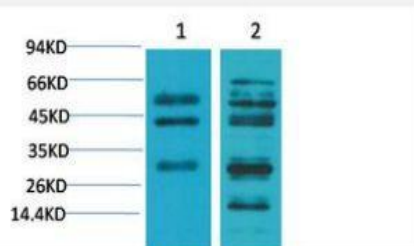


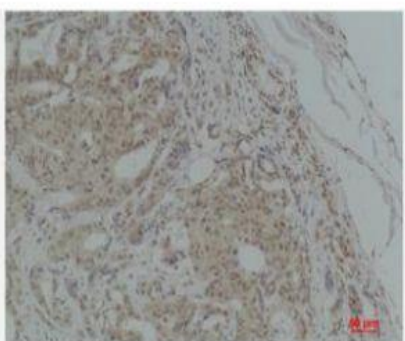
TGFβ1 Polyclonal Antibody

| | |
|------------------------------|--|
| Catalog No. | IPB0048 |
| Reactivity | Human; Mouse; Rat |
| Applications | WB; IHC-p |
| Dilution | WB: 1:1000-2000 IHC: 1:50-1:200 |
| Gene Name | TGFB1 TGFB |
| Protein Name | Transforming growth factor beta-1, TGF-β1, TGF b |
| Human Gene Id | 7040 |
| Swiss-Prot | P01137 |
| Formulation | PBS, pH 7.4, containing 0.5% BSA, 0.02% sodium azide as Preservative and 50% Glycerol |
| Source | Rabbit |
| Purification | The antibody was affinity-purified from rabbit antiserum by affinity-chromatography using epitope-specific immunogen |
| Concentration | - |
| Storage&Stability | -20°C/1 year |
| Subcellular Location | [Latency-associated peptide]: Secreted, extracellular space, extracellular matrix [Transforming growth factor beta-1]: Secreted |
| MW | - |
| Background | This gene encodes a secreted ligand of the TGF-beta (transforming growth factor-beta) superfamily of proteins. Ligands of this family bind various TGF-beta receptors leading to recruitment and activation of SMAD family transcription factors that regulate gene expression. The encoded preproprotein is proteolytically processed to generate a latency-associated peptide (LAP) and a mature peptide, and is found in either a latent form composed of a mature peptide homodimer, a LAP homodimer, and a latent TGF-beta binding protein, or in an active form consisting solely of the mature peptide homodimer. The mature peptide may also form heterodimers with other TGFB family members. This encoded protein regulates cell proliferation, differentiation and growth, and can modulate expression and activation of other growth factors including interferon gamma and tumor necrosis factor alpha. |

Products Images:



Western blot analysis of 1) Mouse Liver Tissue, 2) Rat Liver Tissue using TGFβ1 Polyclonal Antibody. Secondary antibody(catalog#:RS0002) was diluted at 1:20000



Immunohistochemical analysis of paraffin-embedded Human Breast Carcinoma using TGFβ1 Polyclonal Antibody.