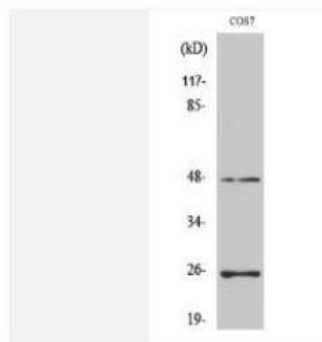


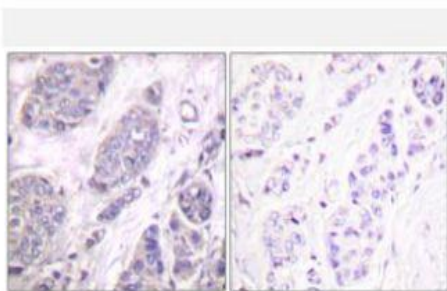
TGFβ3 Polyclonal Antibody

Catalog No.	IPB0044
Reactivity	Human; Mouse; Rat; Monkey
Applications	WB; IHC-p; ELISA
Dilution	WB: 1:500-1:2000 IHC: 1:50-1:200 ELISA: 1:10000
Gene Name	TGFB3
Protein Name	Transforming growth factor beta-3
Human Gene Id	7043
Swiss-Prot	P10600
Formulation	Liquid in PBS containing 50% glycerol, 05% BSA and 002% sodium azide
Source	Rabbit
Purification	The antibody was affinity-purified from rabbit antiserum by affinity-chromatography using epitope-specific immunogen
Concentration	1 mg/ml
Storage&Stability	-20°C/1 year
Subcellular Location	[Latency-associated peptide]: Secreted, extracellular space, extracellular matrix [Transforming growth factor beta-3]: Secreted
MW	47328
Background	This gene encodes a secreted ligand of the TGF-beta (transforming growth factor-beta) superfamily of proteins Ligands of this family bind various TGF-beta receptors leading to recruitment and activation of SMAD family transcription factors that regulate gene expression The encoded preproprotein is proteolytically processed to generate a latency-associated peptide (LAP) and a mature peptide, and is found in either a latent form composed of a mature peptide homodimer, a LAP homodimer, and a latent TGF-beta binding protein, or in an active form consisting solely of the mature peptide homodimer The mature peptide may also form heterodimers with other TGF-beta family members This protein is involved in embryogenesis and cell differentiation, and may play a role in wound healing Mutations in this gene are a cause of aortic aneurysms and dissections, as well as familial arrhythmogenic

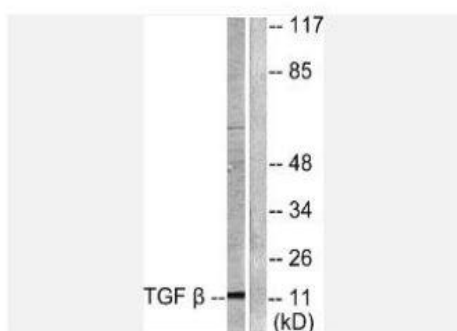
Products Images:



Western Blot analysis of various cells using TGFβ3 Polyclonal Antibody



Immunohistochemistry analysis of paraffin-embedded human breast carcinoma tissue, using TGF beta3 Antibody. The picture on the right is blocked with the synthesized peptide.



Western blot analysis of lysates from COS7 cells, using TGF beta3 Antibody. The lane on the right is blocked with the synthesized peptide.