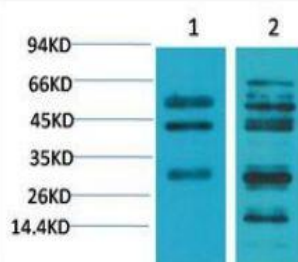


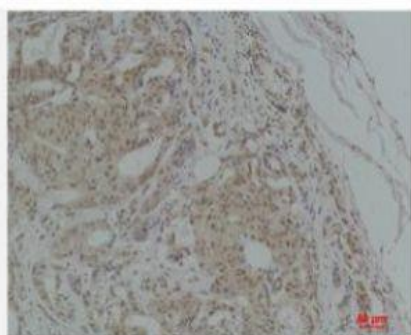
TGFβ1 Polyclonal Antibody

Catalog No.	IPB0043
Reactivity	Human; Mouse; Rat
Applications	WB; IHC-p
Dilution	WB: 1:1000-2000 IHC: 1:50-1:200
Gene Name	TGFB1
Protein Name	Transforming growth factor beta-1
Human Gene Id	7040
Swiss-Prot	P01137
Formulation	PBS, pH 7.4, containing 0.5% BSA, 0.02% sodium azide as Preservative and 50% Glycerol
Source	Rabbit
Purification	The antibody was affinity-purified from rabbit antiserum by affinity-chromatography using epitope-specific immunogen
Concentration	-
Storage&Stability	-20°C/1 year
Subcellular Location	[Latency-associated peptide]: Secreted, extracellular space, extracellular matrix [Transforming growth factor beta-1]: Secreted
MW	-
Background	This gene encodes a secreted ligand of the TGF-beta (transforming growth factor-beta) superfamily of proteins. Ligands of this family bind various TGF-beta receptors leading to recruitment and activation of SMAD family transcription factors that regulate gene expression. The encoded preproprotein is proteolytically processed to generate a latency-associated peptide (LAP) and a mature peptide, and is found in either a latent form composed of a mature peptide homodimer, a LAP homodimer, and a latent TGF-beta binding protein, or in an active form consisting solely of the mature peptide homodimer. The mature peptide may also form heterodimers with other TGFB family members. This encoded protein regulates cell proliferation, differentiation and growth, and can modulate expression and activation of other growth factors including interferon gamma and tumor necrosis factor alpha.

Products Images:



Western blot analysis of 1) Mouse Liver Tissue, 2) Rat Liver Tissue using TGF β 1 Polyclonal Antibody. Secondary antibody(catalog#:RS0002) was diluted at 1:20000



Immunohistochemical analysis of paraffin-embedded Human Breast Carcinoma using TGF β 1 Polyclonal Antibody.