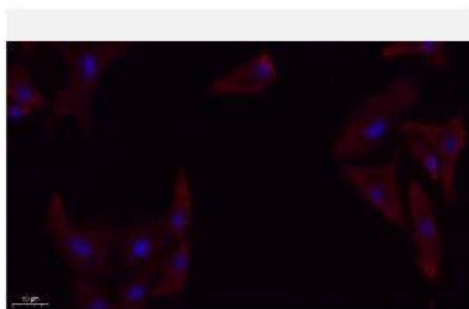


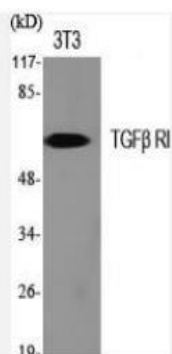
TGFβ RI Polyclonal Antibody

Catalog No.	IPB0037
Reactivity	Human; Mouse; Rat
Applications	WB; IF/ICC; ELISA
Dilution	WB: 1:500-1:2000 ELISA: 1:20000 IF: 1:50-1:200
Gene Name	TGFBR1
Protein Name	TGF-beta receptor type-1
Human Gene Id	7046
Swiss-Prot	P36897
Formulation	Liquid in PBS containing 50% glycerol, 05% BSA and 002% sodium azide
Source	Rabbit
Purification	The antibody was affinity-purified from rabbit antiserum by affinity-chromatography using epitope-specific immunogen
Concentration	1 mg/ml
Storage&Stability	-20°C/1 year
Subcellular Location	Cell membrane; Single-pass type I membrane protein Cell junction, tight junction Cell surface Membrane raft
MW	55960
Background	The protein encoded by this gene forms a heteromeric complex with type II TGF-beta receptors when bound to TGF-beta, transducing the TGF-beta signal from the cell surface to the cytoplasm The encoded protein is a serine:threonine protein kinase Mutations in this gene have been associated with Loeys-Dietz aortic aneurysm syndrome (LDAS) Multiple transcript variants encoding different isoforms have been found for this gene

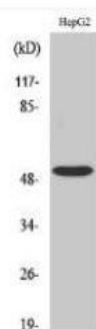
Products Images:



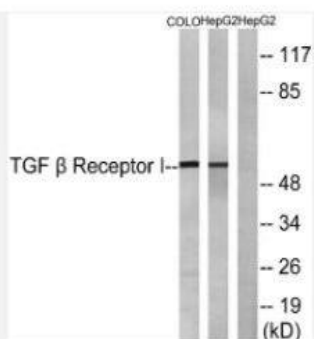
Immunofluorescence analysis of A549. 1,primary Antibody(red) was diluted at 1:200(4°C overnight). 2, Goat Anti Rabbit IgG (H&L) - Alexa Fluor 594 Secondary antibody was diluted at 1:1000(room temperature, 50min).3, Picture B: DAPI(blue) 10min.



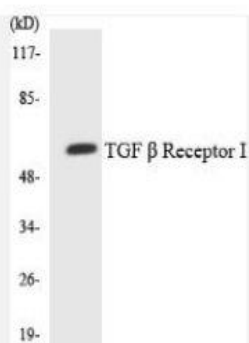
Western Blot analysis of various cells using TGFβ RI Polyclonal Antibody diluted at 1:500



Western Blot analysis of COLO205 cells using TGFβ RI Polyclonal Antibody diluted at 1:500



Western blot analysis of lysates from HepG2 and COLO cells, using TGF beta Receptor I Antibody. The lane on the right is blocked with the synthesized peptide.



Western blot analysis of the lysates from HeLa cells using TGFβ Receptor I antibody.