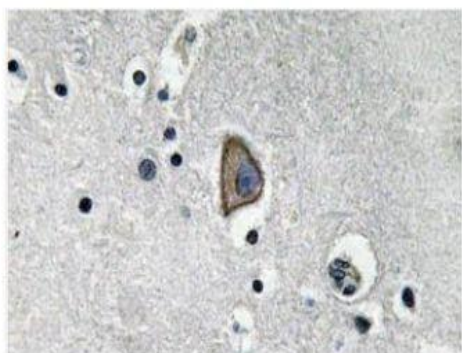


CD3-ε Polyclonal Antibody

Catalog No.	IPB0021
Reactivity	Human; Mouse; Rat
Applications	WB; IHC-p; ELISA
Dilution	WB: 1:500-1:2000 IHC: 1:50-1:200 ELISA: 1:5000
Gene Name	CD3E
Protein Name	T-cell surface glycoprotein CD3 epsilon chain
Human Gene Id	916
Swiss-Prot	P07766
Formulation	Liquid in PBS containing 50% glycerol, 05% BSA and 002% sodium azide
Source	Rabbit
Purification	The antibody was affinity-purified from rabbit antiserum by affinity-chromatography using epitope-specific immunogen
Concentration	1 mg/ml
Storage&Stability	-20°C/1 year
Subcellular Location	Cell membrane; Single-pass type I membrane protein
MW	23147
Background	The protein encoded by this gene is the CD3-epsilon polypeptide, which together with CD3-gamma, -delta and -zeta, and the T-cell receptor alpha:beta and gamma:delta heterodimers, forms the T-cell receptor-CD3 complex This complex plays an important role in coupling antigen recognition to several intracellular signal-transduction pathways The genes encoding the epsilon, gamma and delta polypeptides are located in the same cluster on chromosome 11 The epsilon polypeptide plays an essential role in T-cell development Defects in this gene cause immunodeficiency This gene has also been linked to a susceptibility to type I diabetes in women

Products Images:



Immunohistochemistry analysis of CD3-ε antibody in paraffin-embedded human brain tissue.

