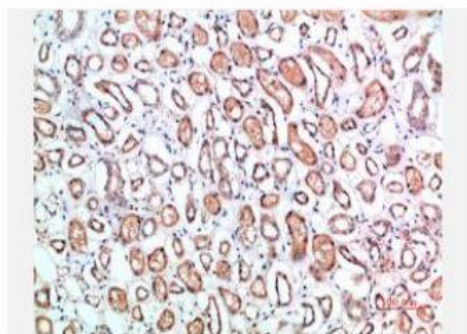


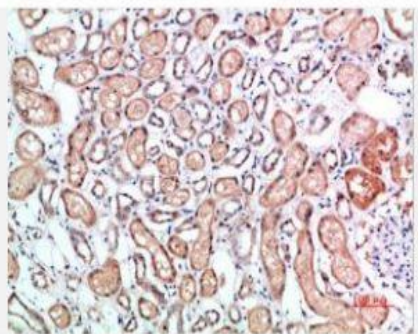
CD1B Polyclonal Antibody

Catalog No.	IPB0007
Reactivity	Human; Mouse; Rat
Applications	IHC-p; ELISA
Dilution	IHC-p: 1:100-1:200 ELISA: 1:10000-20000
Gene Name	CD1B
Protein Name	T-cell surface glycoprotein CD1b (CD antigen CD1b)
Human Gene Id	910
Swiss-Prot	P29016
Formulation	Liquid in PBS containing 50% glycerol, 05% BSA and 002% sodium azide
Source	Rabbit
Purification	The antibody was affinity-purified from rabbit antiserum by affinity-chromatography using epitope-specific immunogen
Concentration	1 mg/ml
Storage&Stability	-20°C/1 year
Subcellular Location	Cell membrane; Single-pass type I membrane protein Endosome membrane; Single-pass type I membrane protein Lysosome membrane; Single-pass type I membrane protein Subject to intracellular trafficking between the cell membrane, endosomes and lysosomes
MW	-
Background	<p>This gene encodes a member of the CD1 family of transmembrane glycoproteins, which are structurally related to the major histocompatibility complex (MHC) proteins and form heterodimers with beta-2-microglobulin. The CD1 proteins mediate the presentation of primarily lipid and glycolipid antigens of self or microbial origin to T cells. The human genome contains five CD1 family genes organized in a cluster on chromosome 1. The CD1 family members are thought to differ in their cellular localization and specificity for particular lipid ligands. The protein encoded by this gene localizes to late endosomes and lysosomes via a tyrosine-based motif in the cytoplasmic tail, and requires vesicular acidification to bind lipid antigens.</p>

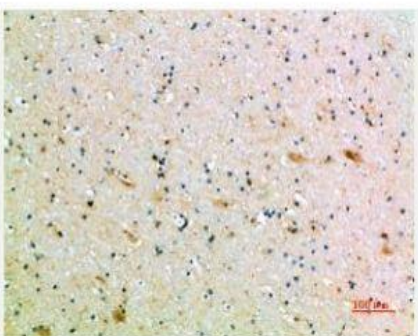
Products Images:



Immunohistochemical analysis of paraffin-embedded human-kidney, antibody was diluted at 1:200



Immunohistochemical analysis of paraffin-embedded human-kidney, antibody was diluted at 1:200



Immunohistochemical analysis of paraffin-embedded human-brain, antibody was diluted at 1:200