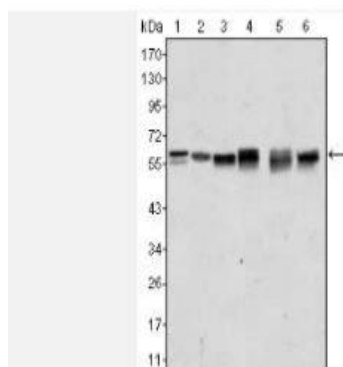


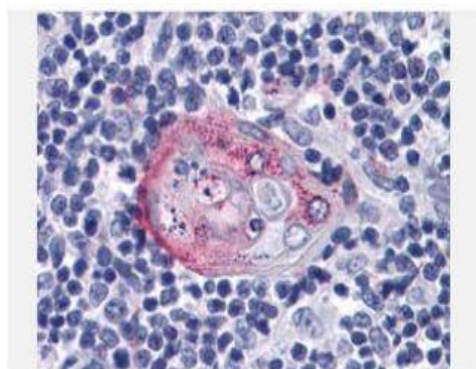
Akt2 Monoclonal Antibody

Catalog No.	IMB0214
Reactivity	Human;Rat;Monkey
Applications	WB; IHC-p; IF/ICC; ELISA
Gene Name	AKT2
Protein Name	RAC-beta serine/threonine-protein kinase
Human Gene Id	208
Swiss-Prot	P31751
Formulation	Ascitic fluid containing 0.03% sodium azide,0.5% BSA, 50%glycerol.
Source	Monoclonal, Mouse
Dilution	WB: 1:500-1:2000 IHC: 1:200-1:1000 IF: 1:200-1:1000 ELISA: 1:10000
Purification	Affinity purification
Concentration	-
Storage&Stability	-20°C/1 year
Background	This gene is a putative oncogene encoding a protein belonging to a subfamily of serine/threonine kinases containing SH2-like (Src homology 2-like) domains. The gene was shown to be amplified and overexpressed in 2 of 8 ovarian carcinoma cell lines and 2 of 15 primary ovarian tumors. Overexpression contributes to the malignant phenotype of a subset of human ductal pancreatic cancers. The encoded protein is a general protein kinase capable of phosphorylating several known proteins. [provided by RefSeq, Jul 2008],
Subcellular Location.	Cytoplasm. Nucleus. Cell membrane; Peripheral membrane protein. Early endosome. Localizes within both nucleus and cytoplasm of proliferative primary myoblasts and mostly within the nucleus of differentiated primary myoblasts. By virtue of the N-terminal PH domain, is recruited to sites of the plasma membrane containing increased PI(3,4,5)P3 or PI(3,4)P2, cell membrane targeting is also facilitated by interaction with CLIP3. Colocalizes with WDFY2 in early endosomes (By similarity).
Bioware	-

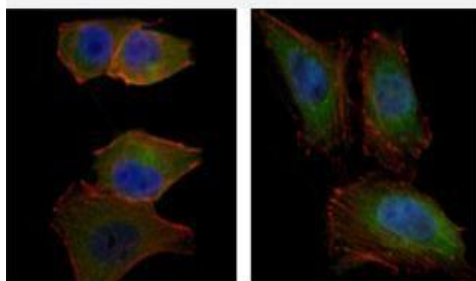
Products Images:



Western Blot analysis using Akt2 Monoclonal Antibody against A431 (1), Jurkat (2), HEK293 (3), A549 (4), MCF-7 (5) and PC-12 (6) cell lysate.



Immunohistochemistry analysis of paraffin-embedded human Thymus tissues with AEC staining using Akt2 Monoclonal Antibody.



Immunofluorescence analysis of PANC-1 (left) and HeLa (right) cells using Akt2 Monoclonal Antibody (green). Blue: DRAQ5 fluorescent DNA dye. Red: Actin filaments have been labeled with Alexa Fluor-555 phalloidin.